

MAX4995BAUT+T



[Maxim Integrated](#)

IC CURR LIMIT SWITCH SOT23-6

Lead free / RoHS Compliant

Integrated Circuits (ICs)

[1.MAX4995BAUT+T.pdf](#)

[2.MAX4995BAUT+T.pdf](#)

[Buy Now](#)

Out Stock

0 pcs

Minimum:1

Multiples:100

Manufacturer lead time 10 weeks

We can supply Maxim Integrated MAX4995BAUT+T, use the request quote form to request MAX4995BAUT+T price, Maxim Integrated Datasheet PDF and lead time. Zeanoit.com is a professional electronic components distributor. With 3+ Million line items of available electronic components can ship in short lead-time, over 250 thousand part numbers of electronic components in stock for immediately delivery, which may include part number MAX4995BAUT+T. The price and lead time for MAX4995BAUT+T depending on the quantity required, availability and warehouse location.

Shopping Process

1

Confirm the product

2

submit the order

3

payment

4

wait for delivery

5

receive the goods

Specifications

Voltage - Input:	1.7 V ~ 5.5 V
Supplier Device Package:	SOT-23-6
Series:	-
Sensing Method:	-
Packaging:	Tape & Reel (TR)
Package / Case:	SOT-23-6
Operating Temperature:	-40°C ~ 125°C
Mounting Type:	Surface Mount
Function:	Current Switch
Current - Output:	Adjustable
Accuracy:	±10%

Related products



MAX4995A_09

in stock

[MAXIM](#)

RFQ



MAX4995C

in stock

[MAXIM](#)

RFQ



MAX4995CAUK+T

in stock

[MAXIM](#)

RFQ



MAX4995BAVB+

IC CURRENT SWITCH 10% 10UTQFN

[Maxim Integrated](#)

RFQ



MAX4995BAVB+T

IC CURRENT SWITCH 10% 10UTQFN

[Maxim Integrated](#)

RFQ



MAX4995ALAVB+T

IC CURRENT SWITCH 10% 10UTQFN

[Maxim Integrated](#)

RFQ



MAX4995BAUK+T

in stock

[MAXIM](#)

RFQ

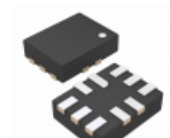


MAX4995B

in stock

[MAXIM](#)

RFQ



MAX4995ALAVB+

IC CURRENT SWITCH 10% 10UTQFN

[Maxim Integrated](#)

RFQ



MAX4995CAUT+T

IC CURR LIMIT SWITCH SOT23-6

[Maxim Integrated](#)

RFQ

Guess You May Looking For



RG3216P-2613-B-T5

RES SMD 261K OHM 0.1% 1/4W 1206

[Susumu](#)

RFQ

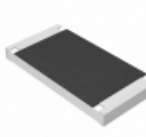


RT0805CRB07430RL

RES SMD 430 OHM 0.25% 1/8W 0805

[Yageo](#)

RFQ

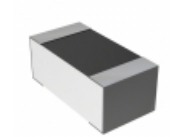


ERJ-S1TF29R4U

RES SMD 29.4 OHM 1% 1W 2512

[Panasonic Electronic Components](#)

RFQ

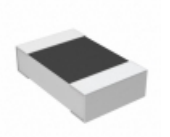


CPF0603B78R7E1

RES SMD 78.7 OHM 0.1% 1/16W 0603

[TE Connectivity Passive Product](#)

RFQ



CPF0805B576RE1

RES SMD 576 OHM 0.1% 1/10W 0805

[TE Connectivity Passive Product](#)

RFQ

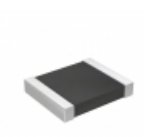


AT1206CRD0727KL

RES SMD 27K OHM 0.25% 1/4W 1206

[Yageo](#)

RFQ

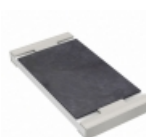


RT1210BRD076K8L

RES SMD 6.8K OHM 0.1% 1/4W 1210

[Yageo](#)

RFQ



PE2512FKE070R012L

RES SMD 0.012 OHM 1% 1W 2512

[Yageo](#)

RFQ



RT1206CRC0715KL

RES SMD 15K OHM 0.25% 1/4W 1206

[Yageo](#)

RFQ



RT1206CRC072KL

RES SMD 2K OHM 0.25% 1/4W 1206

[Yageo](#)

RFQ