

TPS2320IPWR



N/A
 IC DUAL HOTSWAP PWR CONT 16TSSOP
 Lead free / RoHS Compliant
 Integrated Circuits (ICs)

Buy Now

Out Stock

0 pcs

Minimum:1

Multiples:1

Manufacturer lead time 10 weeks

Images are for reference only.

See Product Specifications for product details.

If you are interested to buy TPS2320IPWR,Just Email us.

Sales@zeanoit.com

our sales team will reply you within 24 hours

Shopping Process

1

Confirm the product

2

submit the order

3

payment

4

wait for delivery

5

receive the goods

Specifications

Voltage - Supply:	3 V ~ 13 V, 3 V ~ 5.5 V
Type:	Hot Swap Controller
Supplier Device Package:	16-TSSOP
Series:	-
Programmable Features:	Circuit Breaker, Fault Timeout, Slew Rate
Packaging:	Tape & Reel (TR)
Package / Case:	16-TSSOP (0.173", 4.40mm Width)
Operating Temperature:	-40°C ~ 85°C
Number of Channels:	2
Mounting Type:	Surface Mount
Internal Switch(s):	No
Features:	Latched Fault, UVLO
Feature Pins:	DISCH1, DISCH2, /ENABLE, /FAULT, ISET1, ISET2, TIMER, VREG
Current - Supply:	500µA
Current - Output (Max):	-
Applications:	General Purpose

Related products



TPS2320IDR
 IC DUAL HOTSWAP PWR CONT 16-SOIC
[N/A](#)

RFQ



TPS2320IPWG4
 IC DUAL HOTSWAP PWR CONT
 16TSSOP
[N/A](#)

RFQ



TPS2320IPWRG4
 IC DUAL HOTSWAP PWR CONT
 16TSSOP
[N/A](#)

RFQ



TPS2321IDR
 IC DUAL HOTSWAP PWR CONT 16-SOIC
[N/A](#)

RFQ



TPS2321IDRG4
 IC DUAL HOTSWAP PWR CONT 16-SOIC
[N/A](#)

RFQ



TPS2320IPW
 IC DUAL HOTSWAP PWR CONT
 16TSSOP
[N/A](#)

RFQ



TPS2321ID
 IC HOT SWAP CONTROLLER 16-SOIC
[N/A](#)

RFQ



TPS2320IDG4
 IC DUAL HOTSWAP PWR CONT 16-SOIC
[N/A](#)

RFQ



TPS2320IDRG4
 IC DUAL HOTSWAP PWR CONT 16-SOIC
[N/A](#)

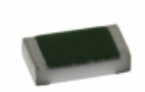
RFQ



TPS2321IPW
 IC DUAL HOTSWAP PWR CONT
 16TSSOP
[N/A](#)

RFQ

Guess You May Looking For



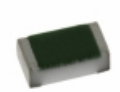
TNPW06031K07BETA
 RES SMD 1.07KOHM 0.1% 1/10W 0603
[Vishay Dale](#)

RFQ



CSNL2010JT40L0
 RES SMD 0.04 OHM 5% 1.5W 2010
[Stackpole Electronics Inc.](#)

RFQ



TNPW040269K8BETD
 RES SMD 69.8KOHM 0.1% 1/16W 0402
[Vishay Dale](#)

RFQ



ERJ-L1DUF67MU
 RES SMD 0.067 OHM 1% 1/2W 2010
[Panasonic Electronic Components](#)

RFQ



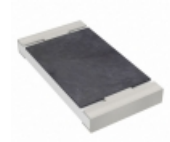
RT0603WRD0788K7L
 RES SMD 88.7K OHM 1/10W 0603
[Yageo](#)

RFQ



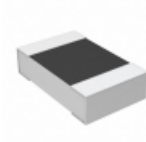
RT2010DKE0733K2L
 RES SMD 33.2K OHM 0.5% 1/2W 2010
[Yageo](#)

RFQ



RT2010DKE0771K5L
 RES SMD 71.5K OHM 0.5% 1/2W 2010
[Yageo](#)

RFQ



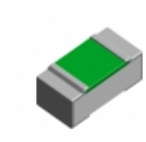
RP73D2A9R76BTF
 RES SMD 9.76 OHM 0.1% 1/8W 0805
[TE Connectivity Passive Product](#)

RFQ



RT0805BRB079K76L
 RES SMD 9.76K OHM 0.1% 1/8W 0805
[Yageo](#)

RFQ



ERA-2HRB1622X
 RES SMD 16.2KOHM 0.1% 1/16W 0402
[Panasonic Electronic Components](#)

RFQ