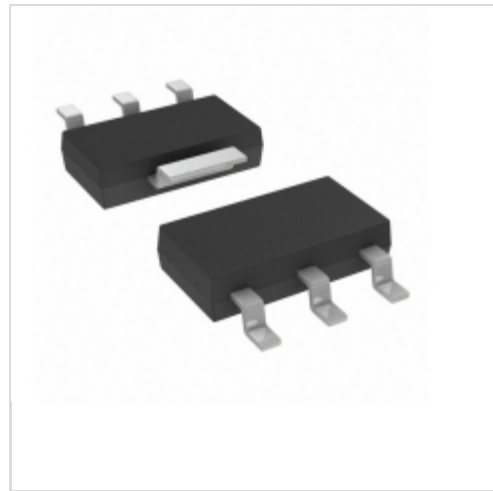


NCP1011ST65T3



[AMI Semiconductor / ON Semiconductor](#)

IC OFFLINE SWIT SMPS CM SOT223
 Contains lead / RoHS non-compliant
 Integrated Circuits (ICs)

[NCP1011ST65T3.pdf](#)

[Buy Now](#)

Images are for reference only.

See Product Specifications for product details.

If you are interested to buy NCP1011ST65T3, Just Email us.

Sales@zeanoit.com

our sales team will reply you within 24 hours

Shopping Process

1

Confirm the product

2

submit the order

3

payment

4

wait for delivery

5

receive the goods

Specifications

Voltage - Supply (Vcc/Vdd):	8.5 V ~ 10 V
Voltage - Breakdown:	700V
Topology:	Flyback
Supplier Device Package:	SOT-223
Series:	-
Power (Watts):	19W
Packaging:	Tape & Reel (TR)
Package / Case:	TO-261-4, TO-261AA
Output Isolation:	Isolated
Operating Temperature:	-40°C ~ 150°C (TJ)
Mounting Type:	Surface Mount
Internal Switch(s):	Yes
Frequency - Switching:	65kHz
Fault Protection:	Over Load, Over Temperature, Over Voltage
Duty Cycle:	67%
Control Features:	-

Related products



NCP1012AP100G
 IC OFFLINE SWITCH SMPS OVP 7DIP
[ON Semiconductor](#)

[RFQ](#)



NCP1011ST65T3G
 IC CTRLR/MOSFET 65KHZ SOT223
[ON Semiconductor](#)

[RFQ](#)



NCP1011ST130T3G
 IC CTRLR/MOSFET 130KHZ SOT223
[ON Semiconductor](#)

[RFQ](#)



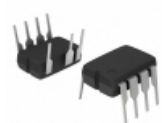
NCP1011ST100T3
 IC OFFLINE SWIT SMPS CM SOT223
[ON Semiconductor](#)

[RFQ](#)



NCP1011ST100T3G
 IC CTRLR/MOSFET 100KHZ SOT223
[ON Semiconductor](#)

[RFQ](#)



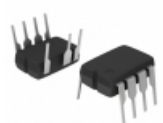
NCP1012AP065
 IC OFFLINE SWIT SMPS CM OVP 7DIP
[ON Semiconductor](#)

[RFQ](#)



NCP1011ST130T3
 IC OFFLINE SWIT SMPS CM SOT223
[ON Semiconductor](#)

[RFQ](#)



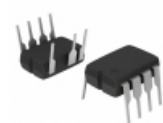
NCP1012AP100
 IC OFFLINE SWIT SMPS CM OVP 7DIP
[ON Semiconductor](#)

[RFQ](#)



NCP1011APL130R2G
 IC CTRLR/MOSFET 130KHZ 7DIPGW
[ON Semiconductor](#)

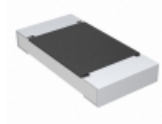
[RFQ](#)



NCP1012AP065G
 IC OFFLINE SWIT SMPS CM OVP 7DIP
[ON Semiconductor](#)

[RFQ](#)

Guess You May Looking For



CRCW20103M60FKTF
 RES SMD 3.6M OHM 1% 3/4W 2010
[Vishay Dale](#)

[RFQ](#)



RNCF0402BTC1K47
 RES SMD 1.47KOHM 0.1% 1/16W 0402
[Stackpole Electronics Inc.](#)

[RFQ](#)



KTR25JZPJ130
 RES SMD 13 OHM 5% 1/3W 1210
[Rohm Semiconductor](#)

[RFQ](#)



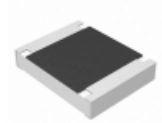
RNCF1206DKE240R
 RES SMD 240 OHM 0.5% 1/4W 1206
[Stackpole Electronics Inc.](#)

[RFQ](#)



RC2512FK-074R3L
 RES SMD 4.3 OHM 1% 1W 2512
[Yageo](#)

[RFQ](#)



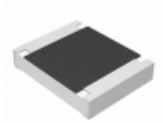
ERJ-S14F24R0U
 RES SMD 24 OHM 1% 1/2W 1210
[Panasonic Electronic Components](#)

[RFQ](#)



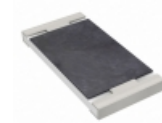
AT0402CRD07150RL
 RES SMD 150 OHM 0.25% 1/16W 0402
[Yageo](#)

[RFQ](#)



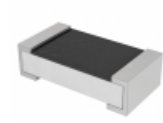
ERJ-S14F5600U
 RES SMD 560 OHM 1% 1/2W 1210
[Panasonic Electronic Components](#)

[RFQ](#)



SR2512MK-07270RL
 RES SMD 270 OHM 20% 1W 2512
[Yageo](#)

[RFQ](#)



PT0402FR-7W0R082L
 RES SMD 0.082 OHM 1% 1/8W 0402
[Yageo](#)

[RFQ](#)