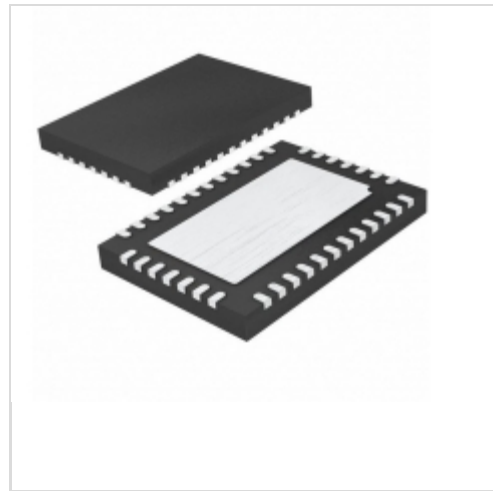


LTC1960CUHF#TRPBF



[Linear Technology / Analog Devices](#)

IC BATT CHRGR/SELECTR DL 38-QFN

Lead free / RoHS Compliant

Integrated Circuits (ICs)

[LTC1960CUHF#TRPBF.pdf](#)

Buy Now

We can supply LTC1960CUHF#TRPBF, use the request quote form to request LTC1960CUHF#TRPBF price and lead time. Zeano is a professional electronic components distributor. With 3+ Million line items of available electronic components can ship in short lead-time, over 250 thousand part numbers of electronic components in stock for immediately delivery, which may include part number LTC1960CUHF#TRPBF. The price and lead time for LTC1960CUHF#TRPBF depending on the quantity required and warehouse location. Contact us and our sales representative will provide you price. We look forward to work with you.

Out Stock

0 pcs

Minimum: 1

Multiples: 100

Manufacturer lead time 10 weeks

Shopping Process

1

Confirm the product

2

submit the order

3

payment

4

wait for delivery

5

receive the goods

Specifications

Voltage - Supply (Max):	28V
Supplier Device Package:	38-QFN (5x7)
Series:	-
Programmable Features:	-
Packaging:	Tape & Reel (TR)
Package / Case:	38-WFQFN Exposed Pad
Operating Temperature:	0°C ~ 70°C (TA)
Number of Cells:	2
Interface:	SPI
Fault Protection:	Over Current
Current - Charging:	-
Charge Current - Max:	-
Battery Pack Voltage:	-
Battery Chemistry:	Smart Batteries

Related products



LTC1960CG#TRPBF

IC BATT CHRGR/SELECTR DUAL36SSOP

[Linear Technology](#)

RFQ



LTC1966CMS8#PBF

IC PREC RMS/DC CONV MCRPWR

8MSOP

[Linear Technology](#)

RFQ



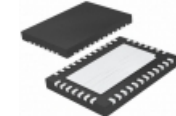
LTC1966CMS8#TRPBF

IC PREC RMS/DC CONV MCRPWR

8MSOP

[Linear Technology](#)

RFQ



LTC1960CUHF#PBF

IC BATT CHRGR/SELECTR DL 38-QFN

[Linear Technology](#)

RFQ



LTC1966CMS8

[LINEAR](#)

RFQ



LTC1966HMS8#TRPBF

IC RMS/DC CONV MICROPWR 8-MSOP

[Linear Technology](#)

RFQ



LTC1966HMS8#PBF

IC RMS/DC CONV MICROPWR 8-MSOP

[Linear Technology](#)

RFQ



LTC1960CG#TR

LT

RFQ



LTC1960CG

[LINEAR](#)

RFQ



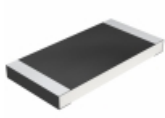
LTC1960CG#PBF

IC BATT CHRGR/SELECTR DUAL36SSOP

[Linear Technology](#)

RFQ

Guess You May Looking For

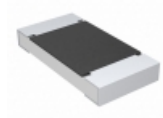


CRCW25121R80FNTG

RES SMD 1.8 OHM 1% 1W 2512

[Vishay Dale](#)

RFQ



CRCW20103R00JMTF

RES SMD 3 OHM 5% 3/4W 2010

[Vishay Dale](#)

RFQ



RT0603WRE0745K3L

RES SMD 45.3K OHM 1/10W 0603

[Yageo](#)

RFQ



AT0603CRD07825RL

RES SMD 825 OHM 0.25% 1/10W 0603

[Yageo](#)

RFQ

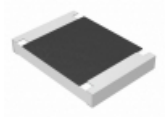


RT0603CRC07182KL

RES SMD 182KOHM 0.25% 1/10W 0603

[Yageo](#)

RFQ



ERJ-S12F2740U

RES SMD 274 OHM 1% 3/4W 1812

[Panasonic Electronic Components](#)

RFQ

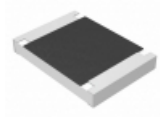


RT0805CRD07412RL

RES SMD 412 OHM 0.25% 1/8W 0805

[Yageo](#)

RFQ

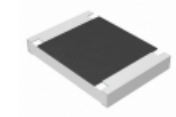


ERJ-S12F3653U

RES SMD 365K OHM 1% 3/4W 1812

[Panasonic Electronic Components](#)

RFQ



ERJ-S12F9762U

RES SMD 97.6K OHM 1% 3/4W 1812

[Panasonic Electronic Components](#)

RFQ



AT0805CRD0753K6L

RES SMD 53.6KOHM 0.25% 1/8W 0805

[Yageo](#)

RFQ