

BD2042AFJ-E2

LAPIS Semiconductor

IC SWITCH HIGH SIDE 2CH SOP-J8

Lead free / RoHS Compliant

Integrated Circuits (ICs)

[BD2042AFJ-E2.pdf](#)
Buy Now

We can supply LAPIS Semiconductor BD2042AFJ-E2, use the request quote form to request BD2042AFJ-E2 price, LAPIS Semiconductor Datasheet PDF and lead time. Zeanoit.com is a professional electronic components distributor. With 3+ Million line items of available electronic components can ship in short lead-time, over 250 thousand part numbers of electronic components in stock for immediately delivery, which may include part number BD2042AFJ-E2. The price and lead time for BD2042AFJ-E2 depending on the quantity required, availability and warehouse location.

Out Stock
0 pcs

Minimum:1

Multiples:100

Manufacturer lead time 10 weeks

PRICE

2500 pcs	\$1.33
5000 pcs	\$1.28

Shopping Process

1
Confirm the product
2
submit the order
3
payment
4
wait for delivery
5
receive the goods

Specifications

Voltage - Supply (Vcc/Vdd):	Not Required
Voltage - Load:	2.7 V ~ 5.5 V
Switch Type:	USB Switch
Supplier Device Package:	8-SOP-J
Series:	-
Rds On (Typ):	100 mOhm
Ratio - Input:Output:	1:2
Packaging:	Tape & Reel (TR)
Package / Case:	8-SOIC (0.154", 3.90mm Width)
Output Type:	N-Channel
Output Configuration:	High Side
Operating Temperature:	-40°C ~ 85°C (TA)
Number of Outputs:	2
Interface:	On/Off
Input Type:	Non-Inverting
Features:	Status Flag
Fault Protection:	Current Limiting (Fixed), Over Temperature, Reverse Current, UVLO
Current - Output (Max):	500mA

Related products


BD2046AFJ-E2

IC SWITCH HIGH SIDE 2CH SOP-J8

[Rohm Semiconductor](#)

RFQ


BD2041AFJ-E2 SOP8
[ROHM](#)

RFQ


BD2041AFJ-E2

IC SWITCH HIGH SIDE 1CH SOP-J8

[Rohm Semiconductor](#)

RFQ


BD204.
[NXP](#)

RFQ


BD2045AFJ-E2

IC SWITCH HIGH SIDE 1CH SOP-J8

[Rohm Semiconductor](#)

RFQ


BD2041AFJ-DE3

in stock

[ROHM](#)

RFQ


BD2040J50100AHF

IC TRANSFORMER BALUN DC 0805

[Anaren](#)

RFQ


BD2051AFJ-E2

IC SWITCH HIGH SIDE 1CH SOP-J8

[Rohm Semiconductor](#)

RFQ

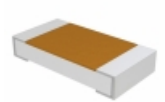

BD204F
[FSC](#)

RFQ


BD204F.
[FSC](#)

RFQ

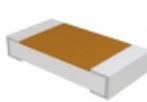
Guess You May Looking For


D55342K07B32B8RT5

RES SMD 32.8K OHM 0.1% 1/4W 1206

[Vishay Dale](#)

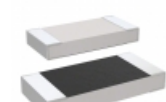
RFQ


D55342H07B21E0RT5

RES SMD 21K OHM 1% 1/4W 1206

[Vishay Dale](#)

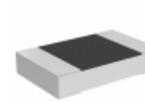
RFQ


M55342H03B6B19RT5

RES SMD 6.19K OHM 0.1% 1/5W 1005

[Vishay Dale](#)

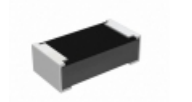
RFQ


PLTT0805Z4221AGT5

RES SMD 4.22KOHM 0.05% 1/4W 0805

[Vishay Thin Film](#)

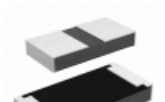
RFQ


RCP0603B470RGED

RES SMD 470 OHM 2% 3.9W 0603

[Vishay Dale](#)

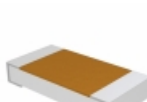
RFQ


RCP1206W1K60JET

RES SMD 1.6K OHM 5% 11W 1206

[Vishay Dale](#)

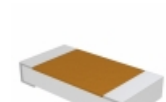
RFQ


D55342E07B301ERWS

RES SMD 301K OHM 1% 1/4W 1206

[Vishay Dale](#)

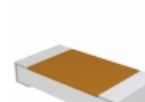
RFQ


D55342E07B475DRWS

RES SMD 475 OHM 1% 1/4W 1206

[Vishay Dale](#)

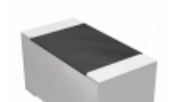
RFQ


D55342E07B408ARWS

RES SMD 408 OHM 0.1% 1/4W 1206

[Vishay Dale](#)

RFQ


M55342K12B1E30RWSV

RES SMD 1.3K OHM 1% 1/10W 0603

[Vishay Dale](#)

RFQ

