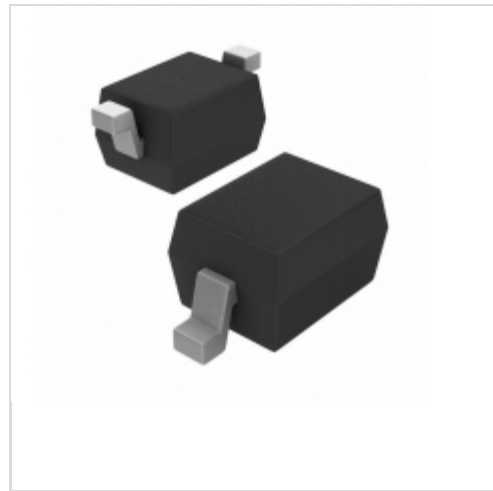


ZMV829ATA



Diodes Incorporated

DIODE VAR CAP 8.2PF 25V SOD-323

Lead free / RoHS Compliant

Discrete Semiconductor Products

[ZMV829ATA.pdf](#)

Buy Now

We can supply Diodes Incorporated ZMV829ATA, use the request quote form to request ZMV829ATA price, Diodes Incorporated Datasheet PDF and lead time. Zeanoit.com is a professional electronic components distributor. With 3+ Million line items of available electronic components can ship in short lead-time, over 250 thousand part numbers of electronic components in stock for immediately delivery, which may include part number ZMV829ATA. The price and lead time for ZMV829ATA depending on the quantity required, availability and warehouse location.

Shopping Process

1

Confirm the product

2

submit the order

3

payment

4

wait for delivery

5

receive the goods

Specifications

Voltage - Peak Reverse (Max):	25V
Supplier Device Package:	SOD-323
Series:	-
Q @ Vr, F:	250 @ 3V, 50MHz
Packaging:	Tape & Reel (TR)
Package / Case:	SC-76, SOD-323
Operating Temperature:	-55°C ~ 150°C (TJ)
Mounting Type:	Surface Mount
Diode Type:	Single
Capacitance Ratio Condition:	C2/C20
Capacitance Ratio:	5.8
Capacitance @ Vr, F:	9.02pF @ 2V, 1MHz

Related products



ZMV830B
[ZETEX](#)

RFQ



ZMV829BTA
DIODE VAR CAP 8.2PF 25V SOD-323
[Diodes Incorporated](#)

RFQ



ZMV830A
[ZETEX](#)

RFQ



ZMV830ATA
DIODE VAR CAP 10PF 25V SOD-323
[Diodes Incorporated](#)

RFQ



ZMV830BTC
DIODE VARACTOR 25V SOD323
[Diodes Incorporated](#)

RFQ



ZMV830ATC
DIODE VARACTOR 25V SOD323
[Diodes Incorporated](#)

RFQ



ZMV829ATC
DIODE VARACTOR 25V SOD323
[Diodes Incorporated](#)

RFQ



ZMV830BTA
DIODE VARACTOR 25V HYPER SOD-323
[Diodes Incorporated](#)

RFQ



ZMV831
[ZETEX](#)

RFQ



ZMV829BTC
DIODE VARACTOR 25V SOD323
[Diodes Incorporated](#)

RFQ

Guess You May Looking For



SIT1602BI-83-33S-74.176000X
-40 TO 85C, 7050, 50PPM, 3.3V, 7
[SITIME](#)

RFQ



SIT1602BC-33-30E-24.000000X
-20 TO 70C, 5032, 50PPM, 3.0V, 2
[SITIME](#)

RFQ



SIT1602BI-83-XXE-74.176000X
-40 TO 85C, 7050, 50PPM, 2.25V-3
[SITIME](#)

RFQ



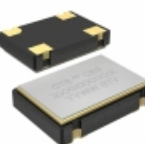
SIT1602BI-83-XXS-24.576000X
-40 TO 85C, 7050, 50PPM, 2.25V-3
[SITIME](#)

RFQ



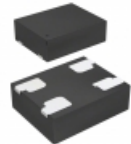
SIT1602BC-33-30N-27.000000X
-20 TO 70C, 5032, 50PPM, 3.0V, 2
[SITIME](#)

RFQ



CB3LV-5I-3M6860
OSC XO 3.686MHZ HCMOS TTL SMD
[CTS-Frequency Controls](#)

RFQ



SIT1602BI-13-28S-20.000000G
-40 TO 85C, 2520, 50PPM, 2.8V, 2
[SITIME](#)

RFQ



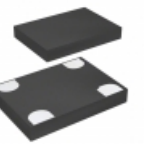
SIT8208AC-G3-18E-33.330000T
-20 TO 70C, 2520, 50PPM, 1.8V, 3
[SITIME](#)

RFQ



SIT8208AC-G3-18S-6.000000T
-20 TO 70C, 2520, 50PPM, 1.8V, 6
[SITIME](#)

RFQ



SIT1602BI-83-33N-10.000000X
-40 TO 85C, 7050, 50PPM, 3.3V, 1
[SITIME](#)

RFQ