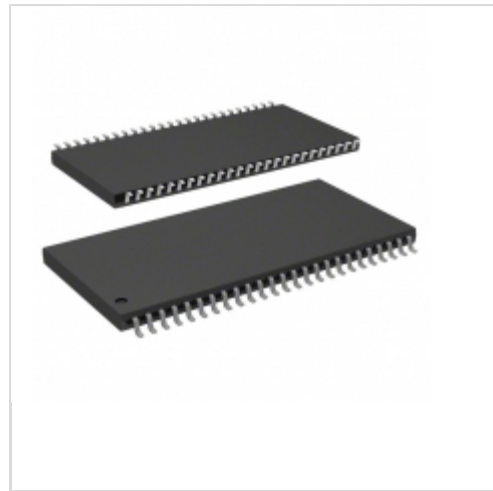


IS42S16100C1-6TL-TR



ISSI (Integrated Silicon Solution, Inc.)

IC SDRAM 16MBIT 166MHZ 50TSOP

Lead free / RoHS Compliant

Integrated Circuits (ICs)

[1.IS42S16100C1-6TL-TR.pdf](#)

[2.IS42S16100C1-6TL-TR.pdf](#)

Buy Now

We can supply IS42S16100C1-6TL-TR, use the request quote form to request IS42S16100C1-6TL-TR price and lead time. Zeano is a professional electronic components distributor. With 3+ Million line items of available electronic components can ship in short lead-time, over 250 thousand part numbers of electronic components in stock for immediately delivery, which may include part number IS42S16100C1-6TL-TR. The price and lead time for IS42S16100C1-6TL-TR depending on the quantity required and warehouse location. Contact us and our sales representative will provide you price. We look forward to work with you.

Shopping Process

1

Confirm the product



2

submit the order



3

payment



4

wait for delivery



5

receive the goods

Specifications

Voltage - Supply:	3 V ~ 3.6 V
Supplier Device Package:	50-TSOP II
Speed:	166MHz
Series:	-
Packaging:	Tape & Reel (TR)
Package / Case:	50-TSOP (0.400", 10.16mm Width)
Operating Temperature:	0°C ~ 70°C (TA)
Memory Type:	Volatile
Memory Size:	16Mb (1M x 16)
Memory Format:	DRAM
Interface:	Parallel

Related products



IS42S16100C1-6T
IC SDRAM 16MBIT 166MHZ 50TSOP
[ISSI, Integrated Silicon Solution Inc](#)

RFQ



IS42S16100C1-7BL
IC SDRAM 16MBIT 143MHZ 60TFBGA
[ISSI, Integrated Silicon Solution Inc](#)

RFQ



IS42S16100C1-6BL
[ISSI](#)

RFQ



IS42S16100C1-7B
IC SDRAM 16MBIT 143MHZ 60TFBGA
[ISSI, Integrated Silicon Solution Inc](#)

RFQ



IS42S16100C1-7BI
IC SDRAM 16MBIT 143MHZ 60TFBGA
[ISSI, Integrated Silicon Solution Inc](#)

RFQ



IS42S16100C1-7BI-TR
IC SDRAM 16MBIT 143MHZ 60TFBGA
[ISSI, Integrated Silicon Solution Inc](#)

RFQ



IS42S16100C1-7B-TR
IC SDRAM 16MBIT 143MHZ 60TFBGA
[ISSI, Integrated Silicon Solution Inc](#)

RFQ



IS42S16100C1-5TL-TR
IC SDRAM 16MBIT 200MHZ 50TSOP
[ISSI, Integrated Silicon Solution Inc](#)

RFQ



IS42S16100C1-6TL
IC SDRAM 16MBIT 166MHZ 50TSOP
[ISSI, Integrated Silicon Solution Inc](#)

RFQ



IS42S16100C1-6T-TR
IC SDRAM 16MBIT 166MHZ 50TSOP
[ISSI, Integrated Silicon Solution Inc](#)

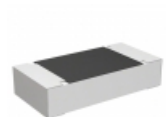
RFQ

Guess You May Looking For



MCR006YRTJ333
RES SMD 33K OHM 5% 1/20W 0201
[Rohm Semiconductor](#)

RFQ



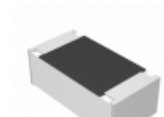
ERA-8AEB4321V
RES SMD 4.32K OHM 0.1% 1/4W 1206
[Panasonic Electronic Components](#)

RFQ



RNCP0805FTD2K32
RES SMD 2.32K OHM 1% 1/4W 0805
[Stackpole Electronics Inc.](#)

RFQ



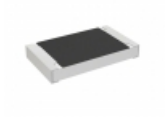
ERA-2ARC1582X
RES SMD 15.8K OHM 1/16W 0402
[Panasonic Electronic Components](#)

RFQ



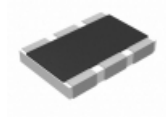
AA0402FR-071M21L
RES SMD 1.21M OHM 1% 1/16W 0402
[Yageo](#)

RFQ



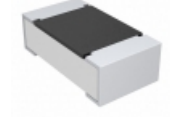
RCS080553R6FKEA
RES SMD 53.6 OHM 1% 0.4W 0805
[Vishay Dale](#)

RFQ



RC1218JK-076K8L
RES SMD 6.8K OHM 1W 1812 WIDE
[Yageo](#)

RFQ



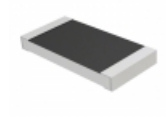
CRCW06031K47DHEAP
RES SMD 1.47KOHM 0.5% 1/10W 0603
[Vishay Dale](#)

RFQ



CRCW080582K0DHEAP
RES SMD 82K OHM 0.5% 1/8W 0805
[Vishay Dale](#)

RFQ



RMCF2010FT14R7
RES SMD 14.7 OHM 1% 3/4W 2010
[Stackpole Electronics Inc.](#)

RFQ