

## AT29C256-90TC-T



**Microchip Technology**

IC FLASH 256KBIT 90NS 28TSOP  
Contains lead / RoHS non-compliant  
Integrated Circuits (ICs)

[AT29C256-90TC-T.pdf](#)

**Buy Now**

Images are for reference only.

See Product Specifications for product details.

If you are interested to buy AT29C256-90TC-T, Just Email us.

Sales@zeanoit.com

our sales team will reply you within 24 hours

### Shopping Process

**1**

Confirm the product

**2**

submit the order

**3**

payment

**4**

wait for delivery

**5**

receive the goods

### Specifications

<b>Voltage - Supply:</b>	4.5 V ~ 5.5 V
<b>Supplier Device Package:</b>	28-TSOP
<b>Speed:</b>	90ns
<b>Series:</b>	-
<b>Packaging:</b>	Tape & Reel (TR)
<b>Package / Case:</b>	28-TSSOP (0.465", 11.80mm Width)
<b>Operating Temperature:</b>	0°C ~ 70°C (TC)
<b>Memory Type:</b>	Non-Volatile
<b>Memory Size:</b>	256Kb (32K x 8)
<b>Memory Format:</b>	FLASH
<b>Interface:</b>	Parallel

### Related products



**AT29C256-90TI-T**

IC FLASH 256KBIT 90NS 28TSOP  
[Microchip Technology](#)

RFQ



**AT29C256-90TC**

in stock  
[ATMEL](#)

RFQ



**AT29C256-90TI**

in stock  
[ATMEL](#)

RFQ



**AT29C256-90PC**

in stock  
[ATMEL](#)

RFQ



**AT29C256-90TI**

IC FLASH 256KBIT 90NS 28TSOP  
[Microchip Technology](#)

RFQ



**AT29C256-90PI**

IC FLASH 256KBIT 90NS 28DIP  
[Microchip Technology](#)

RFQ



**AT29C257**

in stock  
[ATMEL](#)

RFQ



**AT29C256-90TC**

IC FLASH 256KBIT 90NS 28TSOP  
[Microchip Technology](#)

RFQ



**AT29C256-90TU**

in stock  
[ATMEL](#)

RFQ

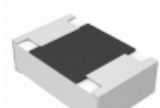


**AT29C256-90PC**

IC FLASH 256KBIT 90NS 28DIP  
[Microchip Technology](#)

RFQ

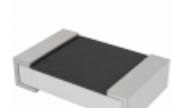
### Guess You May Looking For



**ERJ-6ENF1134V**

RES SMD 1.13M OHM 1% 1/8W 0805  
[Panasonic Electronic Components](#)

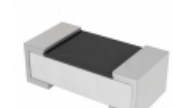
RFQ



**AC0805JR-07100KL**

RES SMD 100K OHM 5% 1/8W 0805  
[Yageo](#)

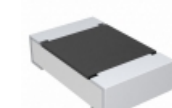
RFQ



**AC0402FR-0723R2L**

RES SMD 23.2 OHM 1% 1/16W 0402  
[Yageo](#)

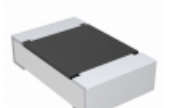
RFQ



**CRCW080568K0FKEC**

RES SMD 68K OHM 1% 1/8W 0805  
[Vishay Dale](#)

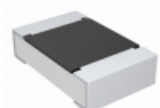
RFQ



**CRCW0805365KFKTC**

RES SMD 365K OHM 1% 1/8W 0805  
[Vishay Dale](#)

RFQ



**CRCW0805237RFKTA**

RES SMD 237 OHM 1% 1/8W 0805  
[Vishay Dale](#)

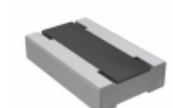
RFQ



**RT1206FRD071K05L**

RES SMD 1.05K OHM 1% 1/4W 1206  
[Yageo](#)

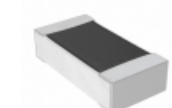
RFQ



**RCL0406240RJNEA**

RES SMD 240 OHM 1/4W 0604 WIDE  
[Vishay Dale](#)

RFQ



**RNCF0603DTE715K**

RES SMD 715K OHM 0.5% 1/10W 0603  
[Stackpole Electronics Inc.](#)

RFQ



**RT1206DRE072K61L**

RES SMD 2.61K OHM 0.5% 1/4W 1206  
[Yageo](#)

RFQ