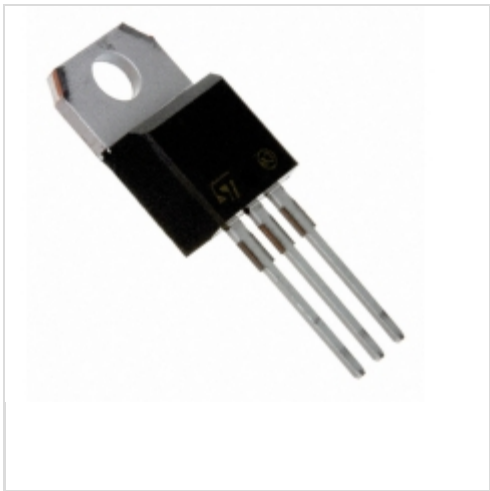


STPS4030CT



STMicroelectronics

DIODE ARRAY SCHOTTKY 30V TO220AB

Lead free / RoHS Compliant

Discrete Semiconductor Products

[STPS4030CT.pdf](#)

Buy Now

Out Stock

0 pcs

Minimum:1

Multiples:100

Manufacturer lead time 10 weeks

part#STPS4030CT is available, see description of STPS4030CT as below .

use the request quote form to request STPS4030CT price and lead time.

Buy Electronic Components at zeanoit.com .we are an independent distributor of electronic components with extensive inventory in stock.

The price and lead time for STPS4030CT depending on the quantity required, availability and warehouse location.Contact us today and our sales team will send you quotation soon.

Email: sales@zeanoit.com

Shopping Process

1

Confirm the product

2

submit the order

3

payment

4

wait for delivery

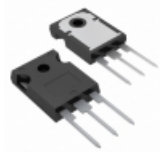
5

receive the goods

Specifications

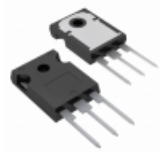
Voltage - Forward (Vf) (Max) @ If:	490mV @ 20A
Voltage - DC Reverse (Vr) (Max):	30V
Supplier Device Package:	TO-220AB
Speed:	Fast Recovery = 200mA (Io)
Series:	-
Packaging:	Tube
Package / Case:	TO-220-3
Operating Temperature - Junction:	150°C (Max)
Mounting Type:	Through Hole
Diode Type:	Schottky
Diode Configuration:	1 Pair Common Cathode
Current - Reverse Leakage @ Vr:	1mA @ 30V
Current - Average Rectified (Io) (per Diode):	20A

Related products



STPS40170CW
DIODE ARRAY SCHOTTKY 170V TO247
[STMicroelectronics](#)

RFQ



STPS4045CW
DIODE ARRAY SCHOTTKY 45V TO247-3
[STMicroelectronics](#)

RFQ



STPS4030CG
in stock
[ST](#)

RFQ



STPS4030CT
in stock
[ST](#)

RFQ



STPS4045CT
DIODE ARRAY SCHOTTKY 45V TO220AB
[STMicroelectronics](#)

RFQ



STPS40170CT
DIODE ARRAY SCHOTTKY 170V TO220
[STMicroelectronics](#)

RFQ



STPS4045CP
DIODE ARRAY SCHOTTKY 45V SOT93
[STMicroelectronics](#)

RFQ



STPS4045CG
in stock
[ST](#)

RFQ



STPS4045CCT
[ST](#)

RFQ



STPS40170CGY-TR
DIODE ARRAY SCHOTTKY 170V D2PAK
[STMicroelectronics](#)

RFQ

Guess You May Looking For



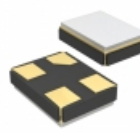
FOXSDLF/143R-20/TR
CRYSTAL 14.31818MHZ 20PF SMD
[Fox Electronics](#)

RFQ



445W35J12M00000
CRYSTAL 12.0000MHZ 9PF SMD
[CTS-Frequency Controls](#)

RFQ



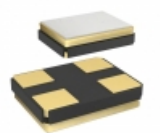
8Z-32.000MAHC-T
CRYSTAL 32.000MHZ 9PF SMT
[TXC CORPORATION](#)

RFQ



7A-30.000MAAK-T
CRYSTAL 30.000MHZ 20PF SMT
[TXC CORPORATION](#)

RFQ



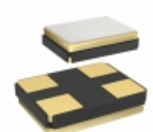
416F36033CKR
CRYSTAL 36.000 MHZ 8PF SMT
[CTS-Frequency Controls](#)

RFQ



CM309E8000000BCKT
CRYSTAL 8.0000MHZ 20PF SMD
[Citizen Finedevice Co Ltd](#)

RFQ



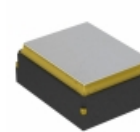
416F36022CTT
CRYSTAL 36.000 MHZ 6PF SMT
[CTS-Frequency Controls](#)

RFQ



SIT2024AM-S2-33N-8.192000G
OSC MEMS 8.1920MHZ LVCMOS SMD
[SITIME](#)

RFQ



ASG2-P-V-A-320.000MHZ
OSC VCXO 320.000MHZ LVPECL SMD
[Abracon LLC](#)

RFQ



SIT1602BC-23-25N-7.372800D
-20 TO 70C, 3225, 50PPM, 2.5V, 7
[SITIME](#)

RFQ