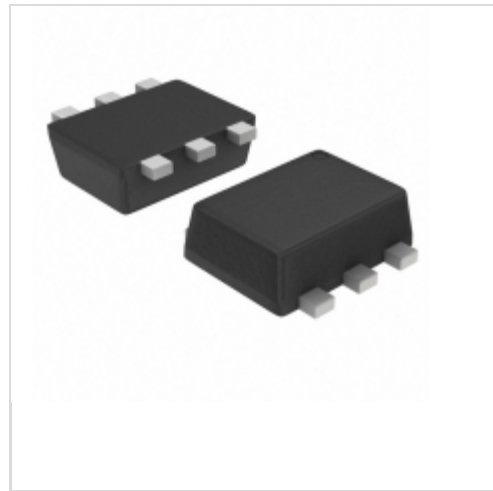


NSR0320XV6T5G



[AMI Semiconductor / ON Semiconductor](#)

DIODE SCHOTTKY 23V 1A SOT563

Lead free / RoHS Compliant

Discrete Semiconductor Products

[NSR0320XV6T5G.pdf](#)

[Buy Now](#)

Out Stock

0 pcs

Minimum:1

Multiples:100

Manufacturer lead time 10 weeks

We can supply AMI Semiconductor / ON Semiconductor NSR0320XV6T5G, use the request quote form to request NSR0320XV6T5G price, AMI Semiconductor / ON Semiconductor Datasheet PDF and lead time. Zeanoit.com is a professional electronic components distributor. With 3+ Million line items of available electronic components can ship in short lead-time, over 250 thousand part numbers of electronic components in stock for immediately delivery, which may include part number NSR0320XV6T5G. The price and lead time for NSR0320XV6T5G depending on the quantity required, availability and warehouse location.

Shopping Process

1

Confirm the product

2

submit the order

3

payment

4

wait for delivery

5

receive the goods

Specifications

Voltage - Forward (Vf) (Max) @ If:	500mV @ 900mA
Voltage - DC Reverse (Vr) (Max):	23V
Supplier Device Package:	SOT-563
Speed:	Fast Recovery = 200mA (Io)
Series:	-
Packaging:	Tape & Reel (TR)
Package / Case:	SOT-563, SOT-666
Operating Temperature - Junction:	125°C (Max)
Mounting Type:	Surface Mount
Diode Type:	Schottky
Current - Reverse Leakage @ Vr:	50µA @ 15V
Current - Average Rectified (Io):	1A (DC)
Capacitance @ Vr, F:	35pF @ 5V, 1MHz

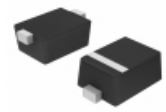
Related products



NSR0320XV6T1G

DIODE SCHOTTKY 23V 1A SOT563
[ON Semiconductor](#)

[RFQ](#)



NSR0340P2T5G

DIODE SCHOTTKY 40V 200MA SOD923
[ON Semiconductor](#)

[RFQ](#)



NSR0320MW2T1G-7

[DIODES](#)

[RFQ](#)



NSR0340V2T5G

DIODE SCHOTTKY 40V 250MA SOD523
[ON Semiconductor](#)

[RFQ](#)



NSR040A0X43Z

DC/DC CONVERTER 0.6-5V 200W
[GE Critical Power](#)

[RFQ](#)



NSR0320MW2T3G

DIODE SCHOTTKY 20V 1A SOD323
[ON Semiconductor](#)

[RFQ](#)



NSR0340HT1G

DIODE SCHOTTKY 40V 250MA SOD323
[ON Semiconductor](#)

[RFQ](#)



NSR0320XV6T1

DIODE SCHOTTKY 23V 1A SOT563
[ON Semiconductor](#)

[RFQ](#)



NSR0320X268

[KEXIN](#)

[RFQ](#)

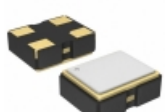


NSR0340V2T1G

DIODE SCHOTTKY 40V 250MA SOD523
[ON Semiconductor](#)

[RFQ](#)

Guess You May Looking For



KM3270004

OSCILLATOR XO 32.768KHZ CMOS SMD
[Diodes Incorporated](#)

[RFQ](#)



SIT1602BI-23-28E-28.636300D

-40 TO 85C, 3225, 50PPM, 2.8V, 2
[SITIME](#)

[RFQ](#)



SIT1602BC-23-28E-74.176000E

-20 TO 70C, 3225, 50PPM, 2.8V, 7
[SITIME](#)

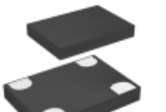
[RFQ](#)



SIT1602BI-23-XXS-65.000000D

-40 TO 85C, 3225, 50PPM, 2.25V-3
[SITIME](#)

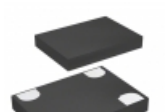
[RFQ](#)



SIT1602BC-83-28S-37.500000Y

-20 TO 70C, 7050, 50PPM, 2.8V, 3
[SITIME](#)

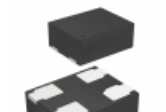
[RFQ](#)



SIT1602BC-83-XXS-74.175824Y

-20 TO 70C, 7050, 50PPM, 2.25V-3
[SITIME](#)

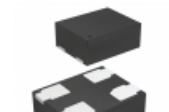
[RFQ](#)



SIT1602BC-71-30S-12.000000D

-20 TO 70C, 2016, 20PPM, 3.0V, 1
[SITIME](#)

[RFQ](#)



SIT1602BC-72-XXE-75.000000E

-20 TO 70C, 2016, 25PPM, 2.25V-3
[SITIME](#)

[RFQ](#)



SIT1602BC-21-33S-25.000000E

-20 TO 70C, 3225, 20PPM, 3.3V, 2
[SITIME](#)

[RFQ](#)



SIT1602BI-81-28E-72.000000T

-40 TO 85C, 7050, 20PPM, 2.8V, 7
[SITIME](#)

[RFQ](#)