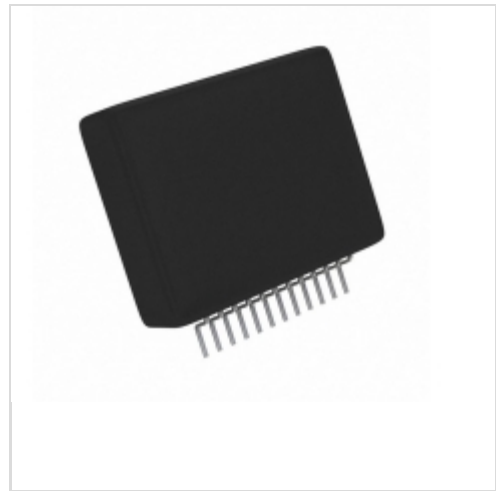


**STK672-520**



[AMI Semiconductor / ON Semiconductor](#)

IC MOTOR DRIVER PAR SIP12  
Lead free / RoHS Compliant  
Integrated Circuits (ICs)

[STK672-520.pdf](#)

**Buy Now**

Images are for reference only.

See Product Specifications for product details.

If you are interested to buy STK672-520,Just Email us.

Sales@zeanoit.com

our sales team will reply you within 24 hours

**Out Stock**

**0 pcs**

Minimum:1

Multiples:100

Manufacturer lead time 10 weeks

Shopping Process

**1**

**Confirm the product**

**2**

**submit the order**

**3**

**payment**

**4**

**wait for delivery**

**5**

**receive the goods**

Specifications

<b>Voltage - Supply:</b>	4.75 V ~ 5.25 V
<b>Voltage - Load:</b>	10 V ~ 42 V
<b>Technology:</b>	Power MOSFET
<b>Supplier Device Package:</b>	12-SIP
<b>Step Resolution:</b>	1, 1/2
<b>Series:</b>	-
<b>Packaging:</b>	Cut Tape (CT)
<b>Package / Case:</b>	12-SIP, Formed Leads
<b>Output Configuration:</b>	Half Bridge (2)
<b>Operating Temperature:</b>	0°C ~ 105°C (TC)
<b>Mounting Type:</b>	Through Hole
<b>Motor Type - Stepper:</b>	Unipolar
<b>Motor Type - AC, DC:</b>	-
<b>Interface:</b>	Parallel
<b>Function:</b>	Driver - Fully Integrated, Control and Power Stage
<b>Current - Output:</b>	1.1A
<b>Applications:</b>	General Purpose

Related products



**STK672-523-E**  
IC MOTOR DRIVER PAR SIP12  
[ON Semiconductor](#)

RFQ



**STK672-442AN-E**  
IC MOTOR DRIVER PAR SIP19  
[ON Semiconductor](#)

RFQ



**STK672-532**  
IC MOTOR DRIVER PAR SIP12  
[ON Semiconductor](#)

RFQ



**STK672-442A-E**  
IC MOTOR DRIVER PAR 19SIP  
[ON Semiconductor](#)

RFQ



**STK672-530A**  
IC MOTOR DRIVER  
[ON Semiconductor](#)

RFQ



**STK672-442B-E**  
IC MOTOR DRIVER PAR SIP19  
[ON Semiconductor](#)

RFQ



**STK672-530**  
IC MOTOR DRIVER  
[ON Semiconductor](#)

RFQ



**STK672-442BN-E**  
IC MOTOR DRIVER PAR 19SIP  
[ON Semiconductor](#)

RFQ



**STK672-531**  
IC MOTOR DRIVER  
[ON Semiconductor](#)

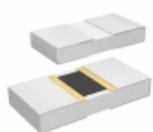
RFQ



**STK672-442BNGEVB**  
EVAL BOARD STK672-442BNG  
[ON Semiconductor](#)

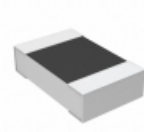
RFQ

Guess You May Looking For



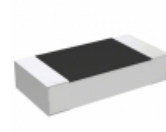
**PHP00805H5171BBT1**  
RES SMD 5.17K OHM 0.1% 5/8W 0805  
[Vishay Thin Film](#)

RFQ



**RP73D2A16R9BTG**  
RES SMD 16.9 OHM 0.1% 1/8W 0805  
[TE Connectivity Passive Product](#)

RFQ



**RP73D2B165KBTG**  
RES SMD 165K OHM 0.1% 1/4W 1206  
[TE Connectivity Passive Product](#)

RFQ



**RP73D1J3K16BTG**  
RES SMD 3.16KOHM 0.1% 1/10W 0603  
[TE Connectivity Passive Product](#)

RFQ



**RG1608V-1911-B-T5**  
RES SMD 1.91KOHM 0.1% 1/10W 0603  
[Susumu](#)

RFQ



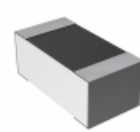
**RG2012V-6650-B-T5**  
RES SMD 665 OHM 0.1% 1/8W 0805  
[Susumu](#)

RFQ



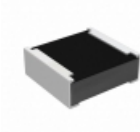
**RG3216V-8061-D-T5**  
RES SMD 8.06K OHM 0.5% 1/4W 1206  
[Susumu](#)

RFQ



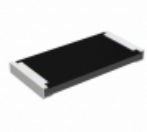
**RN73C1J10KLTG**  
RES SMD 10K OHM 0.01% 1/16W 0603  
[TE Connectivity Passive Product](#)

RFQ



**RCP0505B110RGEB**  
RES SMD 110 OHM 2% 5W 0505  
[Vishay Dale](#)

RFQ



**RCP2512B1K50JTP**  
RES SMD 1.5K OHM 5% 22W 2512  
[Vishay Dale](#)

RFQ

