

DP8421AVX-25



N/A
IC CTRLR/DVR CMOS PROGRAM 68PLCC
Contains lead / RoHS non-compliant
Integrated Circuits (ICs)

Buy Now

Part No. DP8421AVX-25 Is this a common-used part? : Yes
Shipped from : HK or Singapore warehouse
Same model may have multiple batches, images only for reference.
ECAD Models : Contact us to get
Email:sales@zeanoit.com

Shopping Process

1

Confirm the product

2

submit the order

3

payment

4

wait for delivery

5

receive the goods

Specifications

Voltage - Supply:	4.5 V ~ 5.5 V
Supplier Device Package:	68-PLCC
Series:	-
Packaging:	Tape & Reel (TR)
Package / Case:	68-LCC (J-Lead)
Operating Temperature:	0°C ~ 70°C
Controller Type:	Dynamic RAM (DRAM)

Related products



DP8422AVX-25
IC CTRLR/DVR CMOS PROGRAM 84PLCC
N/A

RFQ



DP8422AV-25
IC CTRLR/DVR CMOS PROGRAM 84PLCC
N/A

RFQ



DP8421AV
NS

RFQ



DP8421AV-20
IC CTRLR/DVR CMOS PROGRAM 68PLCC
N/A

RFQ



DP8421AV-25
IC CTRLR/DVR CMOS PROGRAM 68PLCC
N/A

RFQ



DP8422AV-20
IC CTRLR/DVR CMOS PROGRAM 84PLCC
N/A

RFQ



DP8421ATVX-25
IC CTRLR/DVR CMOS PROGRAM 68PLCC
N/A

RFQ



DP8422V-33
NS

RFQ



DP8421AVX-20
IC CTRLR/DVR CMOS PROGRAM 68PLCC
N/A

RFQ



DP8422ATVX-25
IC CTRLR/DVR CMOS PROGRAM 84PLCC
N/A

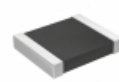
RFQ

Guess You May Looking For



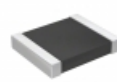
CRGH2010F309K
RES SMD 309K OHM 1% 1W 2010
TE Connectivity Passive Product

RFQ



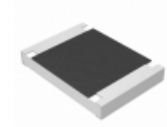
RT1210FRD07392KL
RES SMD 392K OHM 1% 1/4W 1210
Yageo

RFQ



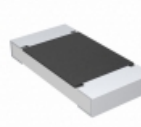
RT1210FRD07374RL
RES SMD 374 OHM 1% 1/4W 1210
Yageo

RFQ



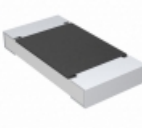
ERJ-S12J184U
RES SMD 180K OHM 5% 3/4W 1812
Panasonic Electronic Components

RFQ



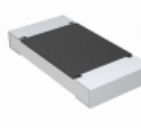
CRCW20105R49FNTF
RES SMD 5.49 OHM 1% 3/4W 2010
Vishay Dale

RFQ



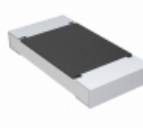
CRCW201015K0JNTF
RES SMD 15K OHM 5% 3/4W 2010
Vishay Dale

RFQ



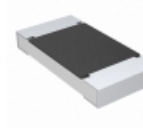
CRCW201016R0JNTF
RES SMD 16 OHM 5% 3/4W 2010
Vishay Dale

RFQ



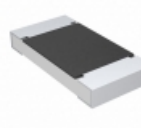
CRCW2010270RJNTF
RES SMD 270 OHM 5% 3/4W 2010
Vishay Dale

RFQ



CRCW20103M30JNTF
RES SMD 3.3M OHM 5% 3/4W 2010
Vishay Dale

RFQ



CRCW2010910KJNTF
RES SMD 910K OHM 5% 3/4W 2010
Vishay Dale

RFQ