

## KMC68MH360RC33L



[NXP Semiconductors / Freescale](#)

IC MPU M683XX 33MHZ 241PGA

Lead free / RoHS Compliant

Integrated Circuits (ICs)

[KMC68MH360RC33L.pdf](#)

**Buy Now**

We can supply KMC68MH360RC33L, use the request quote form to request KMC68MH360RC33L price and lead time. Zeano is a professional electronic components distributor. With 3+ Million line items of available electronic components can ship in short lead-time, over 250 thousand part numbers of electronic components in stock for immediately delivery, which may include part number KMC68MH360RC33L. The price and lead time for KMC68MH360RC33L depending on the quantity required and warehouse location. Contact us and our sales representative will provide you price. We look forward to work with you.

### Shopping Process

**1**

Confirm the product

**2**

submit the order

**3**

payment

**4**

wait for delivery

**5**

receive the goods

### Specifications

<b>Voltage - I/O:</b>	5.0V
<b>USB:</b>	-
<b>Supplier Device Package:</b>	241-PGA (47.24x47.24)
<b>Speed:</b>	33MHz
<b>Series:</b>	M683xx
<b>Security Features:</b>	-
<b>SATA:</b>	-
<b>RAM Controllers:</b>	DRAM
<b>Packaging:</b>	Tray
<b>Package / Case:</b>	241-BEPGA
<b>Operating Temperature:</b>	0°C ~ 70°C (TA)
<b>Number of Cores/Bus Width:</b>	1 Core, 32-Bit
<b>Graphics Acceleration:</b>	No
<b>Ethernet:</b>	10 Mbps (1)
<b>Display &amp; Interface Controllers:</b>	-
<b>Core Processor:</b>	CPU32+
<b>Co-Processors/DSP:</b>	Communications; CPM
<b>Additional Interfaces:</b>	SCC, SMC, SPI

### Related products



**KMC68LC302AF16CT**

IC MPU M683XX 16MHZ 100LQFP

[NXP USA Inc.](#)

RFQ



**KMC68MH360AI33L**

IC MPU M683XX 33MHZ 240FQFP

[NXP USA Inc.](#)

RFQ



**KMC68MH360VR33L**

IC MPU M683XX 33MHZ 357BGA

[NXP USA Inc.](#)

RFQ



**KMC68MH360ZP33L**

IC MPU M683XX 33MHZ 357BGA

[NXP USA Inc.](#)

RFQ



**KMC68LC302AF25CT**

IC MPU M683XX 25MHZ 100LQFP

[NXP USA Inc.](#)

RFQ



**KMC68LC302AF20CT**

IC MPU M683XX 20MHZ 100LQFP

[NXP USA Inc.](#)

RFQ



**KMC68MH360ZQ25VL**

IC MPU M683XX 25MHZ 357BGA

[NXP USA Inc.](#)

RFQ



**KMC68MH360CAI25L**

IC MPU M683XX 25MHZ 240FQFP

[NXP USA Inc.](#)

RFQ



**KMC68MH360VR25VL**

IC MPU M683XX 25MHZ 357BGA

[NXP USA Inc.](#)

RFQ



**KMC68MH360ZP25VL**

IC MPU M683XX 25MHZ 357BGA

[NXP USA Inc.](#)

RFQ

### Guess You May Looking For



**FAN1587AMCX**

IC REG LDO 3A ADJ VOLT TO-263

[Fairchild/ON Semiconductor](#)

RFQ



**SI9136LG-E3**

IC CTRLR PWM PIN PROG 28SSOP

[Vishay Siliconix](#)

RFQ

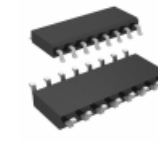


**MC68882RC25A**

IC COPROCESSOR FLOAT PT 68-PGA

[NXP USA Inc.](#)

RFQ



**SI8635ET-IS**

DGTL ISO 5KV 3CH GEN PURP 16SOIC

[Silicon Labs](#)

RFQ



**ADUM1286WARZ**

DGTL ISO 3KV 2CH GEN PURP 8SOIC

[Analog Devices Inc.](#)

RFQ



**ISO35TDW**

DG ISO 2.5KV RS422/RS485 16SOIC

[Texas Instruments](#)

RFQ

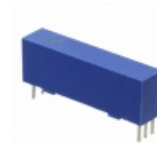


**IL3585**

DG ISO 2.5KV RS422/RS485 16SOIC

[NVE Corp/Isolation Products](#)

RFQ



**OPI1268S**

OPTOISO 20KV OPEN COLLECTOR

[TT Electronics/Optek Technology](#)

RFQ



**HCPL-3020-500**

OPTOISO 3.75KV GATE DRVR 8DIP GW

[Broadcom Limited](#)

RFQ



**8018620000**

OPTOISOLATOR TRANS MODULE

[Weidmüller](#)

RFQ