

TOP257EN



Power Integrations

IC OFFLINE SWIT PROG OVP 7CESIP
Lead free / RoHS Compliant
Integrated Circuits (ICs)

[TOP257EN.pdf](#)

Buy Now

Out Stock

0 pcs

Minimum:1

Multiples:100

Manufacturer lead time 10 weeks

Images are for reference only.

See Product Specifications for product details.

If you are interested to buy TOP257EN,Just Email us.

Sales@zeanoit.com

our sales team will reply you within 24 hours

Shopping Process

1

Confirm the product

2

submit the order

3

payment

4

wait for delivery

5

receive the goods

Specifications

Voltage - Supply (Vcc/Vdd):	-
Voltage - Breakdown:	700V
Topology:	Flyback
Supplier Device Package:	eSIP-7C
Series:	TOPSwitch®-HX
Power (Watts):	157W
Packaging:	Tube
Package / Case:	7-SIP, 6 Leads, Exposed Pad, Formed Leads
Output Isolation:	Isolated
Operating Temperature:	-40°C ~ 150°C (TJ)
Mounting Type:	Through Hole
Internal Switch(s):	Yes
Frequency - Switching:	66kHz, 132kHz
Fault Protection:	Current Limiting, Over Temperature, Over Voltage
Duty Cycle:	78%
Control Features:	-

Related products



TOP257GN-TL
IC OFFLINE SWIT PROG OVP 8SMD
[Power Integrations](#)

RFQ



TOP257LG
IC OFFLINE SWIT PROG OVP 7FESIP
[Power Integrations](#)

RFQ



TOP256MN
IC OFFLINE SWIT PROG OVP 10CSDIP
[Power Integrations](#)

RFQ



TOP257MG
IC OFFLINE SWIT PROG OVP 10CSDIP
[Power Integrations](#)

RFQ



TOP257GN
IC OFFLINE SWIT PROG OVP 8SMD
[Power Integrations](#)

RFQ



TOP256PG
IC OFFLINE SWIT PROG OVP 8DIP
[Power Integrations](#)

RFQ



TOP257EG
IC OFFLINE SWIT PROG OVP 7CESIP
[Power Integrations](#)

RFQ



TOP256PN
IC OFFLINE SWIT PROG OVP 8DIP
[Power Integrations](#)

RFQ



TOP257LN
IC OFFLINE SWIT PROG OVP 7FESIP
[Power Integrations](#)

RFQ



TOP256YN
IC OFFLINE SWIT PROG OVP TO220
[Power Integrations](#)

RFQ

Guess You May Looking For



CRGV2010F402K
RES SMD 402K OHM 1% 1/2W 2010
[TE Connectivity Passive Product](#)

RFQ



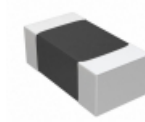
RNCF0805BTC820R
RES SMD 820 OHM 0.1% 1/8W 0805
[Stackpole Electronics Inc.](#)

RFQ



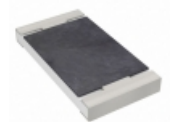
ERJ-L14UJ51MU
RES SMD 0.051 OHM 5% 1/3W 1210
[Panasonic Electronic Components](#)

RFQ



RNCF0402BTC9K09
RES SMD 9.09KOHM 0.1% 1/16W 0402
[Stackpole Electronics Inc.](#)

RFQ



AA2010FK-0722RL
RES SMD 22 OHM 1% 3/4W 2010
[Yageo](#)

RFQ



SMM02070C2151FBS00
RES SMD 2.15K OHM 1% 1W MELF
[Vishay Beyschlag](#)

RFQ



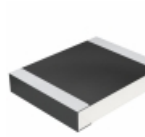
RNCF1206BTC71R5
RES SMD 71.5 OHM 0.1% 1/3W 1206
[Stackpole Electronics Inc.](#)

RFQ



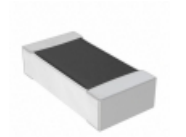
RT0805BRE07105RL
RES SMD 105 OHM 0.1% 1/8W 0805
[Yageo](#)

RFQ



CRCW121033R0FKEAHP
RES SMD 33 OHM 1% 3/4W 1210
[Vishay Dale](#)

RFQ



RNCF0603FKT20K5
RES SMD 20.5K OHM 1% 1/10W 0603
[Stackpole Electronics Inc.](#)

RFQ