

AT27C1024-45PC

Microchip Technology

IC OTP 1MBIT 45NS 40DIP
 Contains lead / RoHS non-compliant
 Integrated Circuits (ICs)

[AT27C1024-45PC.pdf](#)

Buy Now

Images are for reference only.

See Product Specifications for product details.

If you are interested to buy AT27C1024-45PC, Just Email us.

Sales@zeanoit.com

our sales team will reply you within 24 hours

Shopping Process

1

Confirm the product

2

submit the order

3

payment

4

wait for delivery

5

receive the goods

Specifications

Voltage - Supply:	4.5 V ~ 5.5 V
Supplier Device Package:	40-PDIP
Speed:	45ns
Series:	-
Packaging:	Tube
Package / Case:	40-DIP (0.600", 15.24mm)
Operating Temperature:	0°C ~ 70°C (TC)
Memory Type:	Non-Volatile
Memory Size:	1Mb (64K x 16)
Memory Format:	EPROM
Interface:	Parallel

Related products


AT27C1024-45PU
 IC OTP 1MBIT 45NS 40DIP
[Microchip Technology](#)

RFQ



AT27C1024-45PI
 in stock
[ATMEL](#)

RFQ



AT27C1024-45VI
 IC OTP 1MBIT 45NS 40VSOP
[Microchip Technology](#)

RFQ



AT27C1024-45JU
 IC OTP 1MBIT 45NS 44PLCC
[Microchip Technology](#)

RFQ



AT27C1024-45JI
 IC OTP 1MBIT 45NS 44PLCC
[Microchip Technology](#)

RFQ



AT27C1024-45VC
 IC OTP 1MBIT 45NS 40VSOP
[Microchip Technology](#)

RFQ



AT27C1024-45JC
 in stock
[ATMEL](#)

RFQ



AT27C1024-45JU-T
 IC OTP 1MBIT 45NS 44PLCC
[Microchip Technology](#)

RFQ



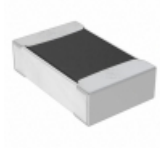
AT27C1024-45JC
 IC OTP 1MBIT 45NS 44PLCC
[Microchip Technology](#)

RFQ



AT27C1024-55JC
 IC OTP 1MBIT 55NS 44PLCC
[Microchip Technology](#)

RFQ

Guess You May Looking For


RNC0805FTD2K21
 RES SMD 2.21K OHM 1% 1/4W 0805
[Stackpole Electronics Inc.](#)

RFQ



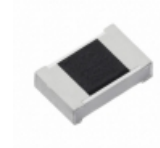
MCR03ERTF3572
 RES SMD 35.7K OHM 1% 1/10W 0603
[Rohm Semiconductor](#)

RFQ



MCR18ERTJ5R6
 RES SMD 5.6 OHM 5% 1/4W 1206
[Rohm Semiconductor](#)

RFQ



ERJ-PB3D4420V
 RES SMD 442 OHM 0.5% 1/5W 0603
[Panasonic Electronic Components](#)

RFQ



CRG0402F1K3
 RES SMD 1.3K OHM 1% 1/16W 0402
[TE Connectivity Passive Product](#)

RFQ



AA0402FR-072R55L
 RES SMD 2.55 OHM 1% 1/16W 0402
[Yageo](#)

RFQ



CRCW12063K40FKEB
 RES SMD 3.4K OHM 1% 1/4W 1206
[Vishay Dale](#)

RFQ



RNCF0805DTC1K10
 RES SMD 1.1K OHM 0.5% 1/8W 0805
[Stackpole Electronics Inc.](#)

RFQ



RG2012P-133-D-T5
 RES SMD 13K OHM 0.5% 1/8W 0805
[Susumu](#)

RFQ



RT0603CRE0714RL
 RES SMD 14 OHM 0.25% 1/10W 0603
[Yageo](#)

RFQ