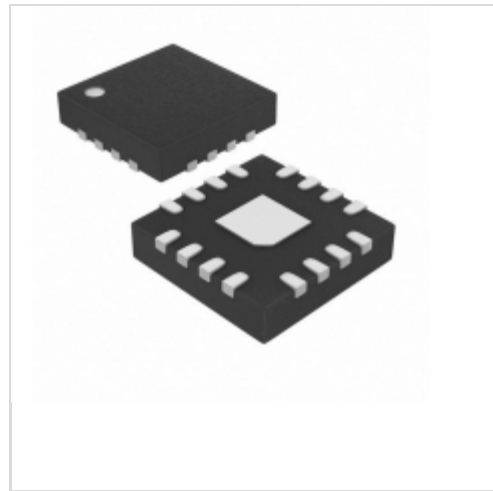


MAX4211CETE-T



[Maxim Integrated](#)

IC CURRENT MONITOR 1.5% 16TQFN

Lead free / RoHS Compliant

Integrated Circuits (ICs)

[1.MAX4211CETE-T.pdf](#)

[2.MAX4211CETE-T.pdf](#)

[Buy Now](#)

We can supply Maxim Integrated MAX4211CETE-T, use the request quote form to request MAX4211CETE-T price, Maxim Integrated Datasheet PDF and lead time. Zeanoit.com is a professional electronic components distributor. With 3+ Million line items of available electronic components can ship in short lead-time, over 250 thousand part numbers of electronic components in stock for immediately delivery, which may include part number MAX4211CETE-T. The price and lead time for MAX4211CETE-T depending on the quantity required, availability and warehouse location.

Shopping Process

1

Confirm the product

2

submit the order

3

payment

4

wait for delivery

5

receive the goods

Specifications

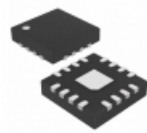
Voltage - Input:	4 V ~ 28 V
Supplier Device Package:	16-TQFN (4x4)
Series:	-
Sensing Method:	High-Side
Packaging:	Tape & Reel (TR)
Package / Case:	16-WQFN Exposed Pad
Operating Temperature:	-40°C ~ 85°C
Mounting Type:	Surface Mount
Function:	Current Monitor
Current - Output:	-
Accuracy:	±0.5%

Related products



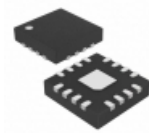
MAX4211BEUE+T
IC CURRENT MONITOR 1.5% 16TSSOP
[Maxim Integrated](#)

RFQ



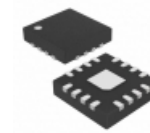
MAX4211DETE+T
IC CURRENT MONITOR 1.5% 16TQFN
[Maxim Integrated](#)

RFQ



MAX4211BETE
IC CURRENT MONITOR 1.5% 16TQFN
[Maxim Integrated](#)

RFQ



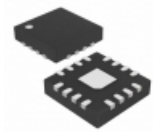
MAX4211DETE+
IC CURRENT MONITOR 1.5% 16TQFN
[Maxim Integrated](#)

RFQ



MAX4211CEUE-T
IC CURRENT MONITOR 1.5% 16-TSSOP
[Maxim Integrated](#)

RFQ



MAX4211CETE+
IC CURRENT MONITOR 1.5% 16TQFN
[Maxim Integrated](#)

RFQ



MAX4211DEUE+
IC CURRENT MONITOR 0.5% 16TSSOP
[Maxim Integrated](#)

RFQ



MAX4211CEUE
IC CURRENT MONITOR 1.5% 16TSSOP
[Maxim Integrated](#)

RFQ



MAX4211BETE+T
IC CURRENT MONITOR 1.5% 16TQFN
[Maxim Integrated](#)

RFQ



MAX4211BEUE+
IC CURRENT MONITOR 1.5% 16TSSOP
[Maxim Integrated](#)

RFQ

Guess You May Looking For



RT0805CRB0713KL
RES SMD 13K OHM 0.25% 1/8W 0805
[Yageo](#)

RFQ



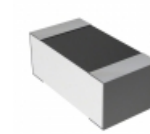
CSR0805FK36L0
RES SMD 0.036 OHM 1% 1/4W 0805
[Stackpole Electronics Inc.](#)

RFQ



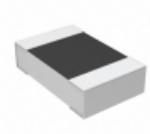
RT0805CRB07576KL
RES SMD 576K OHM 0.25% 1/8W 0805
[Yageo](#)

RFQ



CPF0603B205KE1
RES SMD 205K OHM 0.1% 1/16W 0603
[TE Connectivity Passive Product](#)

RFQ



CPF0805B210RE1
RES SMD 210 OHM 0.1% 1/10W 0805
[TE Connectivity Passive Product](#)

RFQ



RG3216P-9532-B-T1
RES SMD 95.3K OHM 0.1% 1/4W 1206
[Susumu](#)

RFQ



RT1206CRC071K82L
RES SMD 1.82KOHM 0.25% 1/4W 1206
[Yageo](#)

RFQ



RT1206CRC07357KL
RES SMD 357K OHM 0.25% 1/4W 1206
[Yageo](#)

RFQ



RT1206CRC0748K7L
RES SMD 48.7KOHM 0.25% 1/4W 1206
[Yageo](#)

RFQ



RPC2010FT4K99
RES SMD 4.99K OHM 1% 3/4W 2010
[Stackpole Electronics Inc.](#)

RFQ