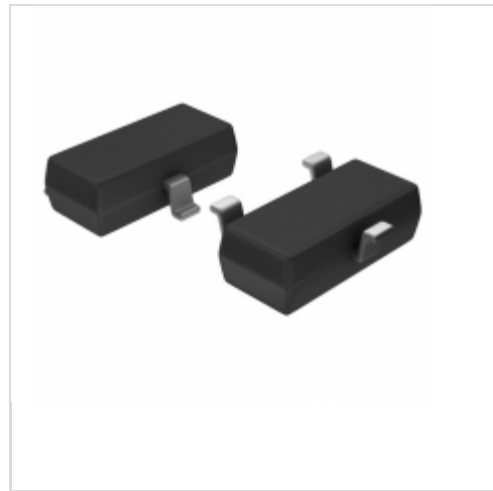


STM1061N22WX6F



[STMicroelectronics](#)

IC VOLT DETECTOR 2.2V LP SOT-23

Lead free / RoHS Compliant

Integrated Circuits (ICs)

[STM1061N22WX6F.pdf](#)

Buy Now

We can supply STM1061N22WX6F, use the request quote form to request STM1061N22WX6F price and lead time. Zeano is a professional electronic components distributor. With 3+ Million line items of available electronic components can ship in short lead-time, over 250 thousand part numbers of electronic components in stock for immediately delivery, which may include part number STM1061N22WX6F. The price and lead time for STM1061N22WX6F depending on the quantity required and warehouse location. Contact us and our sales representative will provide you price. We look forward to work with you.

Out Stock

0 pcs

Minimum: 1

Multiples: 100

Manufacturer lead time 10 weeks

PRICE

3000 pcs	\$0.174
6000 pcs	\$0.162
15000 pcs	\$0.151
30000 pcs	\$0.143

Shopping Process

1

Confirm the product

2

submit the order

3

payment

4

wait for delivery

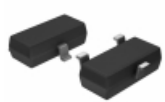
5

receive the goods

Specifications

Voltage - Threshold:	2.2V
Type:	Simple Reset/Power-On Reset
Supplier Device Package:	SOT-23-3
Series:	-
Reset Timeout:	30 μ s Typical Propagation Delay
Reset:	Active Low
Packaging:	Tape & Reel (TR)
Package / Case:	TO-236-3, SC-59, SOT-23-3
Output:	Open Drain or Open Collector
Operating Temperature:	-40°C ~ 85°C (TA)
Number of Voltages Monitored:	1
Mounting Type:	Surface Mount

Related products



STM1061N27WX6F
IC VOLT DETECTOR 2.7V LP SOT-23
[STMicroelectronics](#)

RFQ



STM1061N23WX6F
IC VOLT DETECTOR 2.3V LP SOT-23
[STMicroelectronics](#)

RFQ



STM1061N24WX6F
[ST](#)

RFQ



STM1061N26WX6F
IC VOLT DETECTOR 2.6V LP SOT-23
[STMicroelectronics](#)

RFQ



STM103WAIDT
in stock
[ST](#)

RFQ



STM1061N17WX6F
IC VOLT DETECTOR 1.7V LP SOT-23
[STMicroelectronics](#)

RFQ



STM1061N25WX6F
IC VOLT DETECTOR LP 2.5V SOT-23
[STMicroelectronics](#)

RFQ



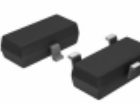
STM1061N21WX6F
IC VOLT DETECTOR LP 2.1V SOT-23
[STMicroelectronics](#)

RFQ



STM1061N19WX6F
IC VOLT DETECTOR LP 1.9V SOT-23
[STMicroelectronics](#)

RFQ



STM1061N16WX6F
IC VOLT DETECTOR 1.6V LP SOT-23
[STMicroelectronics](#)

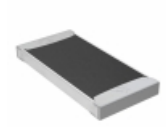
RFQ

Guess You May Looking For



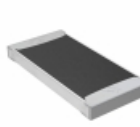
9T04021A2401BAHF3
RES SMD 2.4K OHM 0.1% 1/16W 0402
[Yageo](#)

RFQ



TNPW25122K21BEEG
RES SMD 2.21K OHM 0.1% 1/2W 2512
[Vishay Dale](#)

RFQ



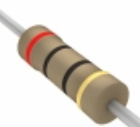
TNPW2512787RBEEY
RES SMD 787 OHM 0.1% 1/2W 2512
[Vishay Dale](#)

RFQ



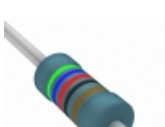
YC324-JK-0713KL
RES ARRAY 4 RES 13K OHM 2012
[Yageo](#)

RFQ



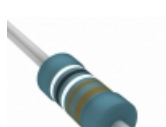
CF12JT20R0
RES 20 OHM 1/2W 5% AXIAL
[Stackpole Electronics Inc.](#)

RFQ



SFR2500005620FA500
RES 562 OHM 0.4W 1% AXIAL
[Vishay BC Components](#)

RFQ



MBB02070C9091FCT00
RES 9.09K OHM 0.6W 1% AXIAL
[Vishay BC Components](#)

RFQ



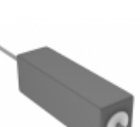
CMF5024K000FKRE
RES 24K OHM 1/4W 1% AXIAL
[Vishay Dale](#)

RFQ



CMF503K3000JKR6
RES 3.3K OHM 1/4W 5% AXIAL
[Vishay Dale](#)

RFQ



PSP500JB-120R
RES 120 OHM 5W 5% AXIAL
[Yageo](#)

RFQ