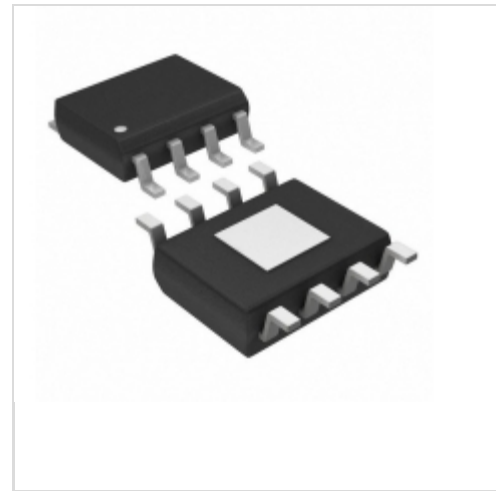


HIP2100EIBZ



Intersil

IC DRIVER HALF BRIDGE 8EPSOIC

Lead free / RoHS Compliant

Integrated Circuits (ICs)

[HIP2100EIBZ.pdf](#)

Buy Now

In Stock

776 pcs

Minimum:1

Multiples:100

Manufacturer lead time 10 weeks

PRICE

1 pcs	\$3.58
10 pcs	\$3.213
100 pcs	\$2.633
500 pcs	\$2.241
1000 pcs	\$1.89

part#HIP2100EIBZ is available, see description of HIP2100EIBZ as below .
use the request quote form to request HIP2100EIBZ price and lead time.
Buy Electronic Components at zeanoit.com .we are an independent distributor of electronic components with extensive inventory in stock.
The price and lead time for HIP2100EIBZ depending on the quantity required, availability and warehouse location.Contact us today and our sales team will send you quotation soon.
Email: sales@zeanoit.com

Shopping Process

1

Confirm the product

2

submit the order

3

payment

4

wait for delivery

5

receive the goods

Specifications

Voltage - Supply:	9 V ~ 14 V
Supplier Device Package:	8-SOIC-EP
Series:	-
Rise / Fall Time (Typ):	10ns, 10ns
Packaging:	Tube
Package / Case:	8-SOIC (0.154", 3.90mm Width) Exposed Pad
Operating Temperature:	-55°C ~ 150°C (TJ)
Number of Drivers:	2
Mounting Type:	Surface Mount
Logic Voltage - VIL, VIH:	4V, 7V
Input Type:	Non-Inverting
High Side Voltage - Max (Bootstrap):	114V
Gate Type:	N-Channel MOSFET
Driven Configuration:	Half-Bridge
Current - Peak Output (Source, Sink):	2A, 2A
Channel Type:	Independent

Related products



HIP2100EIBZT

IC DRIVER HALF BRDG 100V 8EPSOIC

[Intersil](#)

RFQ



HIP1030AS

[INTERSIL](#)

RFQ



HIP2100IBLF

[INTERSIL](#)

RFQ



HIP2100EIBT

IC DRIVER HALF BRIDGE 100V 8SOIC

[Intersil](#)

RFQ



HIP2060AS2

in stock

[INTERSIL](#)

RFQ

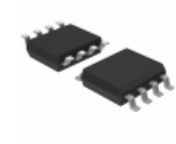


HIP2100EVAL

EVAL BOARD MINI HALF BRIDGE

[Intersil](#)

RFQ



HIP2100IB

IC DRIVER HALF-BRIDGE 8-SOIC

[Intersil](#)

RFQ



HIP2100EVAL2

EVAL BOARD 48VDC-5UDC CONVERTER

[Intersil](#)

RFQ



HIP2100EIB

IC DRIVER HALF BRIDGE 8-SOIC

[Intersil](#)

RFQ



HIP1030A

[HARRIS](#)

RFQ

Guess You May Looking For



CRCW20104R30FKEFHP

RES SMD 4.3 OHM 1% 1W 2010

[Vishay Dale](#)

RFQ

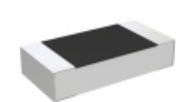


RG3216N-4123-D-T5

RES SMD 412K OHM 0.5% 1/4W 1206

[Susumu](#)

RFQ



CPF1206B22K1E1

RES SMD 22.1K OHM 0.1% 1/8W 1206

[TE Connectivity Passive Product](#)

RFQ

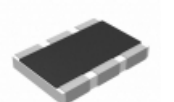


RNCF1210BTC9R09

RES SMD 9.09 OHM 0.1% 1/3W 1210

[Stackpole Electronics Inc.](#)

RFQ

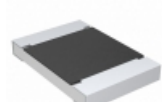


RC1218DK-076K34L

RES SMD 6.34K OHM 1W 1812 WIDE

[Yageo](#)

RFQ

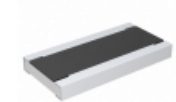


CRCW121868K1FKEK

RES SMD 68.1K OHM 1% 1W 1218

[Vishay Dale](#)

RFQ



RCWE1020R240FKEA

RES SMD 0.24 OHM 2W 2010 WIDE

[Vishay Dale](#)

RFQ

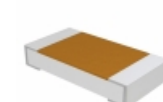


ERJ-B1BJ6R8U

RES SMD 6.8 OHM 2W 2010 WIDE

[Panasonic Electronic Components](#)

RFQ



TNPW120633K2BEEA

RES SMD 33.2K OHM 0.1% 1/4W 1206

[Vishay Dale](#)

RFQ



RNCF2512BTE51R1

RES SMD 51.1 OHM 0.1% 1W 2512

[Stackpole Electronics Inc.](#)

RFQ

