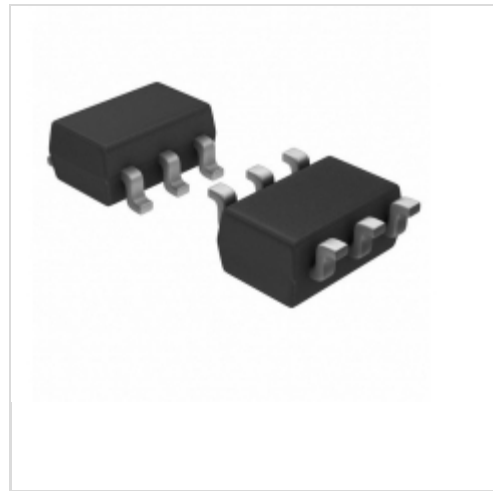


MAX5903LAEUT+T



[Maxim Integrated](#)

IC HOT-SWAP CONTROLLER SOT23-6

Lead free / RoHS Compliant

Integrated Circuits (ICs)

[1.MAX5903LAEUT+T.pdf](#)

[2.MAX5903LAEUT+T.pdf](#)

[Buy Now](#)

Out Stock

0 pcs

Minimum:1

Multiples:100

Manufacturer lead time 10 weeks

PRICE

1 pcs	\$5.32
10 pcs	\$5.02
25 pcs	\$4.02
50 pcs	\$3.82
100 pcs	\$3.52
250 pcs	\$3.34
500 pcs	\$2.51

part#MAX5903LAEUT+T is available, see description of MAX5903LAEUT+T as below .

use the request quote form to request MAX5903LAEUT+T price and lead time.

Buy Electronic Components at zeanoit.com .we are an independent distributor of electronic components with extensive inventory in stock.

The price and lead time for MAX5903LAEUT+T depending on the quantity required, availability and warehouse location.Contact us today and our sales team will send you quotation soon.

Email: sales@zeanoit.com

Shopping Process

1

Confirm the product

2

submit the order

3

payment

4

wait for delivery

5

receive the goods

Specifications

Voltage - Supply:	9 V ~ 72 V
Type:	Hot Swap Controller
Supplier Device Package:	SOT-23-6
Series:	Simple Swapper™
Programmable Features:	UVLO
Packaging:	Tape & Reel (TR)
Package / Case:	SOT-23-6
Operating Temperature:	-40°C ~ 85°C
Number of Channels:	1
Mounting Type:	Surface Mount
Internal Switch(s):	No
Features:	Fault Timeout, Latched Fault, Thermal Limit
Feature Pins:	DRAIN, (ON, /OFF), PGOOD
Current - Supply:	1mA
Current - Output (Max):	-
Applications:	General Purpose

Related products

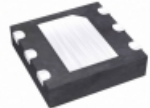


MAX5903ACEUT+T

IC HOT-SWAP CONTROLLER SOT23-6

[Maxim Integrated](#)

RFQ



MAX5903ACETT+T

IC HOT-SWAP CONTROLLER 6-TDFN

[Maxim Integrated](#)

RFQ



MAX5903ABEUT+T

IC HOT-SWAP CONTROLLER SOT23-6

[Maxim Integrated](#)

RFQ

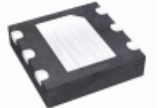


MAX5903LBETT+

in stock

[MAXIM](#)

RFQ

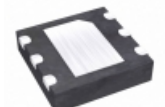


MAX5903LBETT+T

IC HOT-SWAP CONTROLLER 6-TDFN

[Maxim Integrated](#)

RFQ



MAX5903ACETT+

IC HOT-SWAP CONTROLLER 6-TDFN

[Maxim Integrated](#)

RFQ

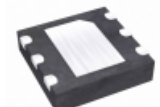


MAX5903LBEUT+T

IC HOT-SWAP CONTROLLER SOT23-6

[Maxim Integrated](#)

RFQ



MAX5903LCETT+T

IC HOT-SWAP CONTROLLER 6-TDFN

[Maxim Integrated](#)

RFQ

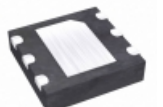


MAX5903LBEUT

in stock

[MAXIM](#)

RFQ



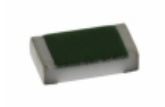
MAX5903LAETT+T

IC HOT-SWAP CONTROLLER 6-TDFN

[Maxim Integrated](#)

RFQ

Guess You May Looking For

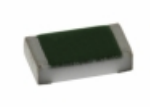


TNPW06031K20BETA

RES SMD 1.2K OHM 0.1% 1/10W 0603

[Vishay Dale](#)

RFQ

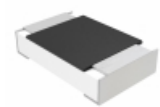


TNPW06034K42BETA

RES SMD 4.42KOHM 0.1% 1/10W 0603

[Vishay Dale](#)

RFQ

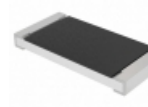


MCU08050E1002BP100

RES SMD 10K OHM 0.1% 1/8W 0805

[Vishay Beyschlag](#)

RFQ

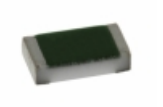


CRCW25121R74FKEGHP

RES SMD 1.74 OHM 1% 1.5W 2512

[Vishay Dale](#)

RFQ



TNPW060317R8BETA

RES SMD 17.8 OHM 0.1% 1/10W 0603

[Vishay Dale](#)

RFQ



RG1005P-47R5-W-T5

RES SMD 47.5OHM 0.05% 1/16W 0402

[Susumu](#)

RFQ



RT0603WRC0727R4L

RES SMD 27.4OHM 0.05% 1/10W 0603

[Yageo](#)

RFQ



RT0603WRC0737R4L

RES SMD 37.4OHM 0.05% 1/10W 0603

[Yageo](#)

RFQ

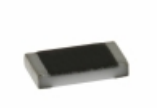


RT0805BRB07604KL

RES SMD 604K OHM 0.1% 1/8W 0805

[Yageo](#)

RFQ



TNPW0805365KBETA

RES SMD 365K OHM 0.1% 1/8W 0805

[Vishay Dale](#)

RFQ

