

MXD1210CSA



Maxim Integrated
IC CNTRLR NONVOLATILE RAM 8-SOIC
Contains lead / RoHS non-compliant
Integrated Circuits (ICs)

[MXD1210CSA.pdf](#)

Buy Now

Images are for reference only.
See Product Specifications for product details.
If you are interested to buy MXD1210CSA,Just Email us.
Sales@zeanoit.com
our sales team will reply you within 24 hours

Shopping Process

1

Confirm the product

2

submit the order

3

payment

4

wait for delivery

5

receive the goods

Specifications

Voltage - Supply:	4.75 V ~ 5.5 V
Supplier Device Package:	8-SOIC
Series:	-
Packaging:	Tube
Package / Case:	8-SOIC (0.154", 3.90mm Width)
Operating Temperature:	0°C ~ 70°C
Controller Type:	Nonvolatile RAM

Related products



MXD1210C/D

in stock
MAXIM

RFQ



MXD1013UA

in stock
MAXIM

RFQ



MXD1210CSA+T

IC CNTRLR NVRAM 8-SOIC
Maxim Integrated

RFQ



MXD1210CWE

MAXIM

RFQ



MXD1210CWE+

IC CNTRLR NVRAM 16-SOIC
Maxim Integrated

RFQ



MXD1210EPA

in stock
MAXIM

RFQ



MXD1210CPA

MAXIM

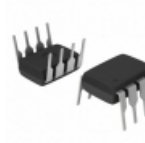
RFQ



MXD1210

in stock
MAXIM

RFQ



MXD1210CPA+

IC CNTRLR NVRAM 8-DIP
Maxim Integrated

RFQ

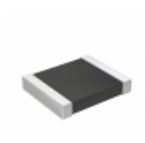


MXD1210CWE+T

MAXIM

RFQ

Guess You May Looking For



RT1210FRD0726K1L

RES SMD 26.1K OHM 1% 1/4W 1210
Yageo

RFQ



CRGH2010F56K2

RES SMD 56.2K OHM 1% 1W 2010
TE Connectivity Passive Product

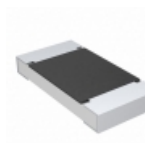
RFQ



ESR25JZP1130

RES SMD 13 OHM 5% 1/2W 1210
Rohm Semiconductor

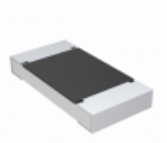
RFQ



CRCW20105R60FNTF

RES SMD 5.6 OHM 1% 3/4W 2010
Vishay Dale

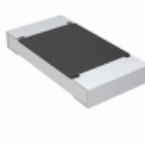
RFQ



CRCW20109R09FNTF

RES SMD 9.09 OHM 1% 3/4W 2010
Vishay Dale

RFQ



CRCW201018K0JNTF

RES SMD 18K OHM 5% 3/4W 2010
Vishay Dale

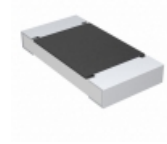
RFQ



CRGH2010F357K

RES SMD 357K OHM 1% 1W 2010
TE Connectivity Passive Product

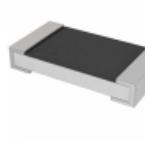
RFQ



CRCW2010360RJNTF

RES SMD 360 OHM 5% 3/4W 2010
Vishay Dale

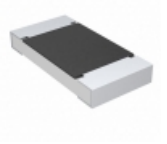
RFQ



PT1206FR-7W0R13L

RES SMD 0.13 OHM 1% 1/2W 1206
Yageo

RFQ



CRCW2010750KJNTF

RES SMD 750K OHM 5% 3/4W 2010
Vishay Dale

RFQ