

ATSAMA5D27A-CUR



Microchip Technology

IC MCU 32BIT EXT MEM 289LFBGA

Lead free / RoHS Compliant

Integrated Circuits (ICs)

[ATSAMA5D27A-CUR.pdf](#)

[Buy Now](#)

Images are for reference only.

See Product Specifications for product details.

If you are interested to buy ATSAMA5D27A-CUR, Just Email us.

Sales@zeanoit.com

our sales team will reply you within 24 hours

Shopping Process

1

Confirm the product

2

submit the order

3

payment

4

wait for delivery

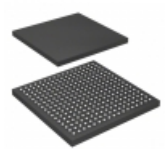
5

receive the goods

Specifications

Voltage - Supply (Vcc/Vdd):	1.1 V ~ 3.6 V
Supplier Device Package:	289-LFBGA
Speed:	500MHz
Series:	SAMA5D2
RAM Size:	128K x 8
Program Memory Type:	External Program Memory
Program Memory Size:	-
Peripherals:	DMA, I ² S, LCD, POR, PWM, WDT
Packaging:	Tape & Reel (TR)
Package / Case:	289-LFBGA
Oscillator Type:	Internal
Operating Temperature:	-40°C ~ 85°C (TA)
Number of I/O:	128
EEPROM Size:	-
Data Converters:	A/D 10x12b
Core Size:	32-Bit
Core Processor:	ARM® Cortex®-A5
Connectivity:	CAN, EBI/EMI, Ethernet, I ² C, IrDA, LIN, MMC/SD/SDIO, QSPI, SPI, SSC, UART/USART, USB

Related products



ATSAMA5D28A-CN

IC MCU 32BIT EXT MEM 289LFBGA

[Microchip Technology](#)

RFQ

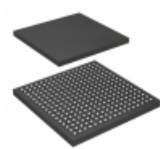


ATSAMA5D26B-CUR

IC MCU 32BIT EXT MEM 289LFBGA

[Microchip Technology](#)

RFQ



ATSAMA5D27A-CU

IC MCU 32BIT EXT MEM 289LFBGA

[Microchip Technology](#)

RFQ

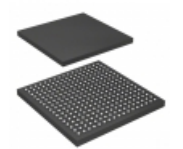


ATSAMA5D27B-CN

IC MCU 32BIT EXT MEM 289LFBGA

[Microchip Technology](#)

RFQ

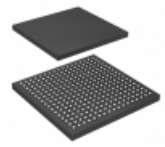


ATSAMA5D27B-CUR

IC MCU 32BIT EXT MEM 289LFBGA

[Microchip Technology](#)

RFQ

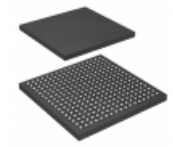


ATSAMA5D27A-CNR

IC MCU 32BIT EXT MEM 289LFBGA

[Microchip Technology](#)

RFQ



ATSAMA5D27B-CU

IC MCU 32BIT EXT MEM 289LFBGA

[Microchip Technology](#)

RFQ

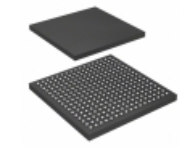


ATSAMA5D27B-CNR

IC MCU 32BIT EXT MEM 289LFBGA

[Microchip Technology](#)

RFQ

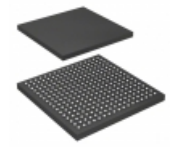


ATSAMA5D27A-CN

IC MCU 32BIT EXT MEM 289LFBGA

[Microchip Technology](#)

RFQ



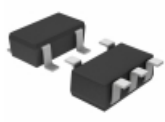
ATSAMA5D26B-CU

IC MCU 32BIT EXT MEM 289LFBGA

[Microchip Technology](#)

RFQ

Guess You May Looking For

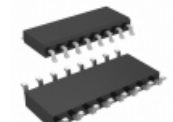


BD2202G-LBTR

IC LOAD SWITCH PORTABLE 5SSOP

[Rohm Semiconductor](#)

RFQ

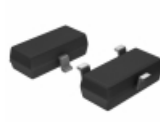


MAX8214BCSE+

IC MONITOR VOLT MPU 16-SOIC

[Maxim Integrated](#)

RFQ

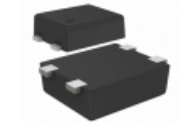


MAX809SEUR+T

IC MPU/RESET CIRC SOT23-3

[Maxim Integrated](#)

RFQ



S-80134CLPF-JITTFU

IC VOLT DETECTOR 3.4V SNT-4A

[SII Semiconductor Corporation](#)

RFQ



CAT8801XSD-GT3

VOLTAGE SUP LOW CURRENT

[ON Semiconductor](#)

RFQ



UCC2580DTR-3G4

IC REG CTRLR FWRD CONV 16SOIC

[Texas Instruments](#)

RFQ



LM25574MT/NOPB

IC REG BUCK ADJ 0.5A 16TSSOP

[Texas Instruments](#)

RFQ

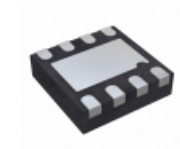


TPS78101DDCT

IC REG LDO ADJ 0.15A 5SOT

[Texas Instruments](#)

RFQ

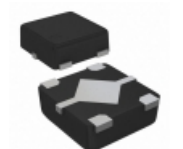


ADM7154ACPZ-2.5-R7

IC REG LDO 2.5V 0.6A 8LFCSP

[Analog Devices Inc.](#)

RFQ



S-13R1D14-A4T2U3

IC REG LINEAR 1.4V 0.15A HSNT-4

[SII Semiconductor Corporation](#)

RFQ