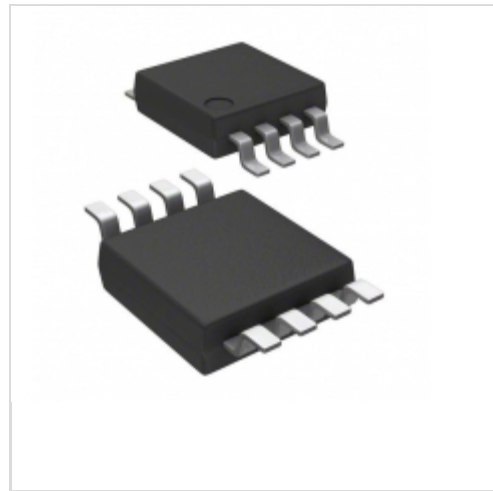


**MAX4473EUA+**



[Maxim Integrated](#)

IC RF PWR CNTRL AMP PA GSM 8UMAX  
Lead free / RoHS Compliant  
RF/IF and RFID

[MAX4473EUA+.pdf](#)

**Buy Now**

**In Stock**  
**387 pcs**  
Minimum:1  
Multiples:100  
Manufacturer lead time 10 weeks

PRICE	
1 pcs	\$2.03
10 pcs	\$1.93
50 pcs	\$1.91

Images are for reference only.

See Product Specifications for product details.

If you are interested to buy MAX4473EUA+, Just Email us.

Sales@zeanoit.com

our sales team will reply you within 24 hours

Shopping Process

**1**

Confirm the product

**2**

submit the order

**3**

payment

**4**

wait for delivery

**5**

receive the goods

Specifications

<b>Supplier Device Package:</b>	8-uMAX
<b>Series:</b>	-
<b>RF Type:</b>	GSM
<b>Packaging:</b>	Tube
<b>Package / Case:</b>	8-TSSOP, 8-MSOP (0.118", 3.00mm Width)
<b>Frequency:</b>	-
<b>Features:</b>	-

Related products



**MAX4473ETA-T**

[MAXIM](#)

RFQ



**MAX4473ESA**

IC RF PWR CNTRL AMP PA GSM 8SOIC  
[Maxim Integrated](#)

RFQ



**MAX4473EUA**

[MAXIM](#)

RFQ



**MAX4473ESA-T**

IC AMP PA PWR GSM CTRL 8-SOIC  
[Maxim Integrated](#)

RFQ



**MAX4473EUA+T**

IC RF PWR CNTRL AMP PA GSM 8UMAX  
[Maxim Integrated](#)

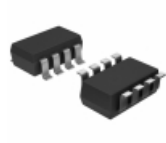
RFQ



**MAX4473\_08**

in stock  
[MAXIM](#)

RFQ



**MAX4474EKA+T**

IC OPAMP GP 40KHZ RRO SOT23-8  
[Maxim Integrated](#)

RFQ



**MAX4473**

in stock  
[MAXIM](#)

RFQ



**MAX4474**

in stock  
[MAXIM](#)

RFQ



**MAX4473EUA-T**

[MAXIM](#)

RFQ

Guess You May Looking For



**S1-22RF1**

RES SMD 22 OHM 1% 1/2W 1913  
[Riedon](#)

RFQ



**NSM6227FT64R9**

RES SMD 64.9 OHM 1% 3W 6227  
[Stackpole Electronics Inc.](#)

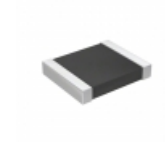
RFQ



**S4-57R6F8**

RES SMD 57.6 OHM 1% 2W 4525  
[Riedon](#)

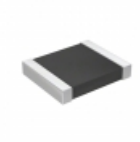
RFQ



**RT1210WRD0727RL**

RES SMD 27 OHM 0.05% 1/4W 1210  
[Yageo](#)

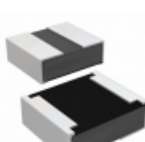
RFQ



**RT1210WRD07154RL**

RES SMD 154 OHM 0.05% 1/4W 1210  
[Yageo](#)

RFQ



**RCP0505W430RJEB**

RES SMD 430 OHM 5% 5W 0505  
[Vishay Dale](#)

RFQ



**RG1608V-361-W-T1**

RES SMD 360 OHM 0.05% 1/10W 0603  
[Susumu](#)

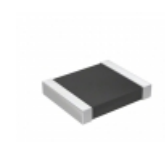
RFQ



**RCP0505W160RGS3**

RES SMD 160 OHM 2% 5W 0505  
[Vishay Dale](#)

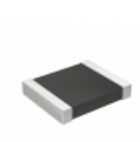
RFQ



**RT1210WRD07300KL**

RES SMD 300K OHM 0.05% 1/4W 1210  
[Yageo](#)

RFQ



**RT1210WRD0713K3L**

RES SMD 13.3KOHM 0.05% 1/4W 1210  
[Yageo](#)

RFQ