

**MB90F543GPF-G-FLE1**

**Cypress Semiconductor**

IC MCU 16BIT 128KB FLASH 100QFP  
Lead free / RoHS Compliant  
Integrated Circuits (ICs)

[MB90F543GPF-G-FLE1.pdf](#)

**Buy Now**

We can supply Cypress Semiconductor MB90F543GPF-G-FLE1, use the request quote form to request MB90F543GPF-G-FLE1 price, Cypress Semiconductor Datasheet PDF and lead time. Zeanoit.com is a professional electronic components distributor. With 3+ Million line items of available electronic components can ship in short lead-time, over 250 thousand part numbers of electronic components in stock for immediately delivery, which may include part number MB90F543GPF-G-FLE1. The price and lead time for MB90F543GPF-G-FLE1 depending on the quantity required, availability and warehouse location.

**Out Stock**

**0 pcs**

Minimum:1

Multiples:100

Manufacturer lead time 10 weeks

## Shopping Process

**1**
**Confirm the product**
**2**
**submit the order**
**3**
**payment**
**4**
**wait for delivery**
**5**
**receive the goods**

## Specifications

<b>Voltage - Supply (Vcc/Vdd):</b>	4.5 V ~ 5.5 V
<b>Supplier Device Package:</b>	100-QFP (14x20)
<b>Speed:</b>	16MHz
<b>Series:</b>	F <sup>2</sup> MC-16LX MB90540G
<b>RAM Size:</b>	6K x 8
<b>Program Memory Type:</b>	FLASH
<b>Program Memory Size:</b>	128KB (128K x 8)
<b>Peripherals:</b>	POR, WDT
<b>Packaging:</b>	Tray
<b>Package / Case:</b>	100-BQFP
<b>Oscillator Type:</b>	External
<b>Operating Temperature:</b>	-40°C ~ 105°C (TA)
<b>Number of I/O:</b>	81
<b>EEPROM Size:</b>	-
<b>Data Converters:</b>	A/D 8x8/10b
<b>Core Size:</b>	16-Bit
<b>Core Processor:</b>	F <sup>2</sup> MC-16LX
<b>Connectivity:</b>	CAN, EBI/EMI, SCI, Serial I/O, UART/USART

## Related products

**MB90F543**

in stock

[FUJITSU](#)

RFQ


**MB90F543GPFV-G**

IC MCU 16BIT 128KB FLASH 100LQFP

[Cypress Semiconductor Corp](#)

RFQ

**MB90F543GPFV**

in stock

[FUJITSU](#)

RFQ

**MB90F543GPF**

in stock

[FUJITSU](#)

RFQ

**MB90F543GPF-GE1**
[CYPRESS](#)

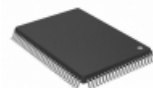
RFQ

**MB90F523PFV**

in stock

[FUJITSU](#)

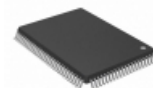
RFQ


**MB90F543GPF-R**

IC MCU 16BIT 128KB FLASH 100QFP

[Cypress Semiconductor Corp](#)

RFQ


**MB90F543GPF-G**

IC MCU 16BIT 128KB FLASH 100QFP

[Cypress Semiconductor Corp](#)

RFQ


**MB90F543GPFV-G-FLE1**

IC MCU 16BIT 128KB FLASH 100LQFP

[Cypress Semiconductor Corp](#)

RFQ

**MB90F543G**

in stock

[FUJITSU](#)

RFQ

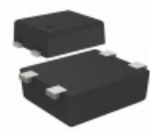
## Guess You May Looking For

**LX6523ID**

IC CTRLR CCFL BACKLIGHT 2SOIC

[Microsemi Corporation](#)

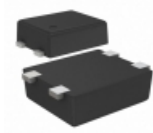
RFQ


**S-1000N42-I4T1G**

IC VOLT DETECT N-CH 42V SNT-4A

[SII Semiconductor Corporation](#)

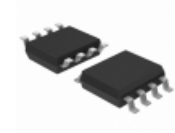
RFQ


**S-80836CLPF-B6VTFG**

IC VOLT DETECTOR 3.6V SNT-4A

[SII Semiconductor Corporation](#)

RFQ


**MAX6190CESA+T**

IC VREF SERIES 1.25V 8SOIC

[Maxim Integrated](#)

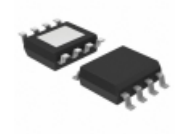
RFQ


**SC2442ITSTRT**

IC REG CTRLR BUCK 24TSSOP

[Semtech Corporation](#)

RFQ


**AOZ1252PI**

IC REG BUCK ADJ 2A SYNC 8SO

[Alpha & Omega Semiconductor Inc.](#)

RFQ


**MCP1801T-3302I/OT**

IC REG LDO 3.3V 0.15A SOT23-5

[Microchip Technology](#)

RFQ


**AP2121AK-1.5TRE1**

IC REG LDO 1.5V 0.2A SOT25

[Diodes Incorporated](#)

RFQ


**S-1121B39MC-N2YTFG**

IC REG LINEAR 3.9V 0.15A SOT23-5

[SII Semiconductor Corporation](#)

RFQ


**MAX8531EBTGGJ+T**

IC REG LDO 2.85V 6UCSP

[Maxim Integrated](#)

RFQ

