

LYT4321E3



Power Integrations

IC LED DRIVER OFFL DIM ESIP-7C
Lead free / RoHS Compliant
Integrated Circuits (ICs)

[LYT4321E3.pdf](#)

Buy Now

Images are for reference only.

See Product Specifications for product details.

If you are interested to buy LYT4321E3,Just Email us.

Sales@zeanoit.com

our sales team will reply you within 24 hours

Out Stock

0 pcs

Minimum:1

Multiples:100

Manufacturer lead time 10 weeks

Shopping Process

1

Confirm the product

2

submit the order

3

payment

4

wait for delivery

5

receive the goods

Specifications

Voltage - Supply (Min):	160VAC
Voltage - Supply (Max):	300VAC
Voltage - Output:	-
Type:	AC DC Offline Switcher
Topology:	Flyback, Step-Down (Buck), Step-Up (Boost)
Supplier Device Package:	eSIP-7C
Series:	LYTSwitch™-4
Packaging:	Tube
Package / Case:	7-SIP, 6 Leads, Exposed Pad, Formed Leads
Operating Temperature:	-40°C ~ 150°C (TJ)
Number of Outputs:	1
Mounting Type:	Surface Mount
Internal Switch(s):	Yes
Frequency:	132kHz
Dimming:	Triac
Current - Output / Channel:	1.37A (Switch)
Applications:	-

Related products



LYT4318E
IC LED DRIVER OFFL DIM ESIP-7C
[Power Integrations](#)

RFQ



LYT4318E2
IC LED DRIVER OFFL DIM ESIP-7C
[Power Integrations](#)

RFQ



LYT4323E
IC LED DRIVER OFFL DIM ESIP-7C
[Power Integrations](#)

RFQ



LYT4322E3_RD
[POWER](#)

RFQ



LYT4322E3
IC LED DRIVER OFFL DIM ESIP-7C
[Power Integrations](#)

RFQ



LYT4321E1
[POWER](#)

RFQ



LYT4323E3
IC LED DRIVER OFFL DIM ESIP-7C
[Power Integrations](#)

RFQ



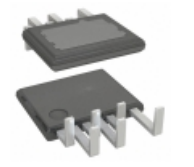
LYT4321E
IC LED DRIVER OFFL DIM ESIP-7C
[Power Integrations](#)

RFQ



LYT4322E
IC LED DRIVER OFFL DIM ESIP-7C
[Power Integrations](#)

RFQ



LYT4318L
IC LED DRIVER OFFL DIM ESIP-7F
[Power Integrations](#)

RFQ

Guess You May Looking For



RT0805WRC0723K2L
RES SMD 23.2KOHM 0.05% 1/8W 0805
[Yageo](#)

RFQ



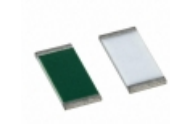
RT0805WRC071K58L
RES SMD 1.58KOHM 0.05% 1/8W 0805
[Yageo](#)

RFQ



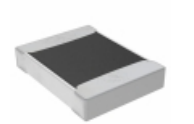
RG1005N-4221-B-T5
RES SMD 4.22KOHM 0.1% 1/16W 0402
[Susumu](#)

RFQ



PAT0805E81R6BST1
RES SMD 81.6 OHM 0.1% 1/5W 0805
[Vishay Thin Film](#)

RFQ



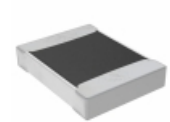
TNPW12106K81BEEA
RES SMD 6.81K OHM 0.1% 1/3W 1210
[Vishay Dale](#)

RFQ



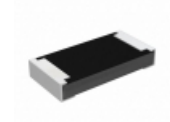
RT1206WRD0786R6L
RES SMD 86.6 OHM 0.05% 1/4W 1206
[Yageo](#)

RFQ



TNPW1210750KBETA
RES SMD 750K OHM 0.1% 1/3W 1210
[Vishay Dale](#)

RFQ



RCP1206B820RJTP
RES SMD 820 OHM 5% 11W 1206
[Vishay Dale](#)

RFQ



PTN1206E1583BST1
RES SMD 158K OHM 0.1% 0.4W 1206
[Vishay Thin Film](#)

RFQ



PTN1206E95R3BST1
RES SMD 95.3 OHM 0.1% 0.4W 1206
[Vishay Thin Film](#)

RFQ

