

**CAT28C64BH13I12T**

**AMI Semiconductor / ON Semiconductor**

IC EEPROM 64KBIT 120NS 28TSOP

Lead free / RoHS Compliant

Integrated Circuits (ICs)

[CAT28C64BH13I12T.pdf](#)
**Buy Now**

part#CAT28C64BH13I12T is available, see description of CAT28C64BH13I12T as below .

use the request quote form to request CAT28C64BH13I12T price and lead time. Buy Electronic Components at zeanoit.com .we are an independent distributor of electronic components with extensive inventory in stock.

The price and lead time for CAT28C64BH13I12T depending on the quantity required, availability and warehouse location.Contact us today and our sales team will send you quotation soon.

Email: sales@zeanoit.com

## Shopping Process

**1**

Confirm the product

**2**

submit the order

**3**

payment

**4**

wait for delivery

**5**

receive the goods

## Specifications

<b>Voltage - Supply:</b>	4.5 V ~ 5.5 V
<b>Supplier Device Package:</b>	28-TSOP
<b>Speed:</b>	120ns
<b>Series:</b>	-
<b>Packaging:</b>	Tape & Reel (TR)
<b>Package / Case:</b>	28-TSSOP (0.465", 11.80mm Width)
<b>Operating Temperature:</b>	-40°C ~ 85°C (TA)
<b>Memory Type:</b>	Non-Volatile
<b>Memory Size:</b>	64Kb (8K x 8)
<b>Memory Format:</b>	EEPROM
<b>Interface:</b>	Parallel

## Related products


**CAT28C64BJI-12**  
[CSI](#)

RFQ


**CAT28C64BJE-12**  
[CATALYST](#)

RFQ


**CAT28C64BH13-90T**  
 IC EEPROM 64KBIT 90NS 28TSOP  
[ON Semiconductor](#)

RFQ


**CAT28C64BH1312**  
 IC EEPROM 64KBIT 120NS 28TSOP  
[ON Semiconductor](#)

RFQ


**CAT28C64BH13I-12**  
[CSI](#)

RFQ


**CAT28C64BH1390**  
 IC EEPROM 64KBIT 90NS 28TSOP  
[ON Semiconductor](#)

RFQ


**CAT28C64BJ-12**  
[CSI](#)

RFQ


**CAT28C64BH13I12**  
 IC EEPROM 64KBIT 120NS 28TSOP  
[ON Semiconductor](#)

RFQ


**CAT28C64BJ-20**  
[CSI](#)

RFQ


**CAT28C64BJ-15**  
[CATALYST](#)

RFQ

## Guess You May Looking For


**ERJ-XGN0R00Y**  
 RES SMD 0.0 OHM JUMP 1/32W 01005  
[Panasonic Electronic Components](#)

RFQ


**LVK20R039FER**  
 RES SMD 0.039 OHM 1% 3/4W 2010  
[Ohmite](#)

RFQ


**MCR50JZHFLR220**  
 RES SMD 0.22 OHM 1% 1/2W 2010  
[Rohm Semiconductor](#)

RFQ


**RMCF0805JT43R0**  
 RES SMD 43 OHM 5% 1/8W 0805  
[Stackpole Electronics Inc.](#)

RFQ


**RMCF1206FT24R9**  
 RES SMD 24.9 OHM 1% 1/4W 1206  
[Stackpole Electronics Inc.](#)

RFQ


**RC1608F1473CS**  
 RES SMD 147K OHM 1% 1/10W 0603  
[Samsung Electro-Mechanics America, Inc.](#)

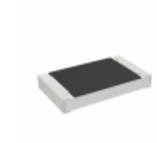
RFQ


**CRCW040222R0FKED**  
 RES SMD 22 OHM 1% 1/16W 0402  
[Vishay Dale](#)

RFQ


**AF0805FR-07402KL**  
 RES SMD 402K OHM 1% 1/8W 0805  
[Yageo](#)

RFQ


**RCS0805562RFKEA**  
 RES SMD 562 OHM 1% 0.4W 0805  
[Vishay Dale](#)

RFQ


**AT0805BRD0741K2L**  
 RES SMD 41.2K OHM 0.1% 1/8W 0805  
[Yageo](#)

RFQ