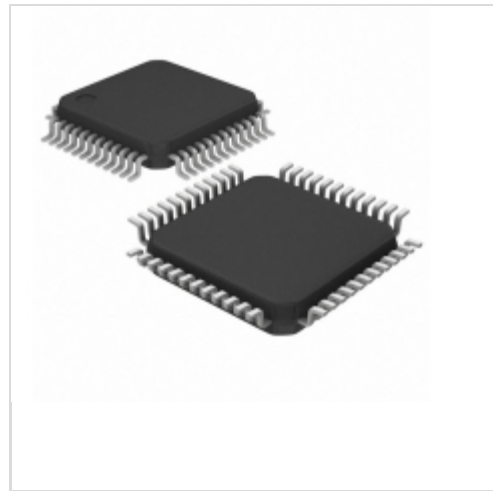


MB90387SPMT-G-388SN-YE1

Cypress Semiconductor

IC MCU 16BIT 64KB MROM 48LQFP

Lead free / RoHS Compliant

Integrated Circuits (ICs)

[MB90387SPMT-G-388SN-YE1.pdf](#)
Buy Now

We can supply Cypress Semiconductor MB90387SPMT-G-388SN-YE1, use the request quote form to request MB90387SPMT-G-388SN-YE1 price, Cypress Semiconductor Datasheet PDF and lead time. Zeanoit.com is a professional electronic components distributor. With 3+ Million line items of available electronic components can ship in short lead-time, over 250 thousand part numbers of electronic components in stock for immediately delivery, which may include part number MB90387SPMT-G-388SN-YE1. The price and lead time for MB90387SPMT-G-388SN-YE1 depending on the quantity required, availability and warehouse location.

Out Stock
0 pcs

Minimum:1

Multiples:100

Manufacturer lead time 10 weeks

Shopping Process
1
Confirm the product
2
submit the order
3
payment
4
wait for delivery
5
receive the goods
Specifications

Voltage - Supply (Vcc/Vdd):	3.5 V ~ 5.5 V
Supplier Device Package:	48-LQFP (7x7)
Speed:	16MHz
Series:	F ² MC-16LX MB90385
RAM Size:	2K x 8
Program Memory Type:	Mask ROM
Program Memory Size:	64KB (64K x 8)
Peripherals:	POR, WDT
Packaging:	Tray
Package / Case:	48-LQFP
Oscillator Type:	External
Operating Temperature:	-40°C ~ 105°C (TA)
Number of I/O:	36
EEPROM Size:	-
Data Converters:	A/D 8x8/10b
Core Size:	16-Bit
Core Processor:	F ² MC-16LX
Connectivity:	CAN, SCI, UART/USART

Related products

MB90387SPMT-GS
[FUJISTU](#)
RFQ

MB90387SPMT-G-368-SNE1

IC MCU 16BIT 64KB MROM 48LQFP

[Cypress Semiconductor Corp](#)
RFQ

MB90387SPMT-G-368SN-YE1

IC MCU 16BIT 64KB MROM 48LQFP

[Cypress Semiconductor Corp](#)
RFQ

MB90387SPMT-GS-110E1

IC MCU 16BIT 64KB MROM 48LQFP

[Cypress Semiconductor Corp](#)
RFQ

MB90387SPMT-GS-119

IC MCU 16BIT 64KB MROM 48LQFP

[Cypress Semiconductor Corp](#)
RFQ

MB90387SPMT-G-392SN-YE1

IC MCU 16BIT 64KB MROM 48LQFP

[Cypress Semiconductor Corp](#)
RFQ

MB90387SPMT-G-382SN-YE1

IC MCU 16BIT 64KB MROM 48LQFP

[Cypress Semiconductor Corp](#)
RFQ

MB90387SPMT-G-383SN-YE1

IC MCU 16BIT 64KB MROM 48LQFP

[Cypress Semiconductor Corp](#)
RFQ

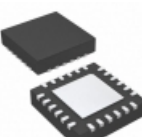
MB90387SPMT-GS-117

IC MCU 16BIT 64KB MROM 48LQFP

[Cypress Semiconductor Corp](#)
RFQ

MB90387SPMT-G-367SN-YE1

IC MCU 16BIT 64KB MROM 48LQFP

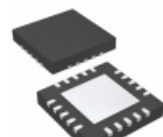
[Cypress Semiconductor Corp](#)
RFQ
Guess You May Looking For

MP3388DR-LF-Z

IC LED DRIVER

[Monolithic Power Systems Inc.](#)
RFQ

S-80847CNNB-B88T2U

IC VOLT DETECTOR 4.7V SC-82AB

[SII Semiconductor Corporation](#)
RFQ

UCD7231RTJT

IC REG CTRLR BUCK 20QFN

[Texas Instruments](#)
RFQ

MAX856CSA+

IC REG BOOST PROG 0.5A 8SOIC

[Maxim Integrated](#)
RFQ

TPS78001DDCR

IC REG LDO ADJ 0.15A 5SOT

[Texas Instruments](#)
RFQ

TLE42962GV33HTSA1

IC REG LDO 3.3V 30MA SCT595-5

[Infineon Technologies](#)
RFQ

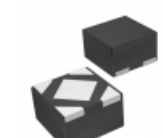
TPS70939DBVT

IC REG LDO 3.9V 0.15A SOT23-5

[Texas Instruments](#)
RFQ

LMS1587CS-ADJ/NOPB

IC REG LDO ADJ 3A DPAK

[Texas Instruments](#)
RFQ

RT9073A-33GQZ

IC REG LDO 3.3V 0.25A 4ZQFN

[Richtek USA Inc.](#)
RFQ

AN77L10

IC REG LDO 10V 0.1A TO92-3

[Panasonic Electronic Components](#)
RFQ

