

EYP-2BN124



Panasonic

TCO 250VAC 2A 130C(266F) AXIAL
 Contains lead / RoHS non-compliant
 Circuit Protection

[EYP-2BN124.pdf](#)

Buy Now

part#EYP-2BN124 is available, see description of EYP-2BN124 as below .
 use the request quote form to request EYP-2BN124 price and lead time.
 Buy Electronic Components at zeanoit.com .we are an independent distributor of
 electronic components with extensive inventory in stock.
 The price and lead time for EYP-2BN124 depending on the quantity required,
 availability and warehouse location.Contact us today and our sales team will send you
 quotation soon.
 Email: sales@zeanoit.com

Shopping Process

1

Confirm the product

2

submit the order

3

payment

4

wait for delivery

5

receive the goods

Specifications

Voltage - Rated DC:	50V
Voltage - Rated AC:	250V
Series:	N
Rated Functioning Temperature:	130°C (266°F)
Package / Case:	Axial
Maximum Temperature Limit:	200°C (392°F)
Holding Temperature:	105°C (221°F)
Current Rating:	2A
Approvals:	BEAB, CCC, CSA, PSE, UL, VDE

Related products



EYP-2BN163
 TCO 250VAC 2A 168C(334F) AXIAL
[Panasonic Electronic Components](#)

RFQ



EYP-2BN143
 TCO 250VAC 2A 145C(293F) AXIAL
[Panasonic Electronic Components](#)

RFQ



EYP-2BN110
 TCO 250VAC 2A 115C(239F) AXIAL
[Panasonic Electronic Components](#)

RFQ



EYP-2BN099
 TCO 250VAC 2A 102C(216F) AXIAL
[Panasonic Electronic Components](#)

RFQ



EYP-2BN135
 TCO 250VAC 2A 140C(284F) AXIAL
[Panasonic Electronic Components](#)

RFQ



EYP-2BN126
 TCO 250VAC 2A 133C(271F) AXIAL
[Panasonic Electronic Components](#)

RFQ



EYP-2BN183
 TCO 250VAC 2A 188C AXIAL
[Panasonic Electronic Components](#)

RFQ



EYP-2BN109
 TCO 250VAC 2A 114C(237F) AXIAL
[Panasonic Electronic Components](#)

RFQ



EYP-2BN088
 TCO 250VAC 2A 92C(198F) AXIAL
[Panasonic Electronic Components](#)

RFQ



EYP-2BN098
 TCO 250VAC 2A 102C(216F) AXIAL
[Panasonic Electronic Components](#)

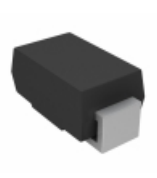
RFQ

Guess You May Looking For



SMCJ17CA
 TVS DIODE 17VWM 27.6VC SMC
[Littelfuse Inc.](#)

RFQ



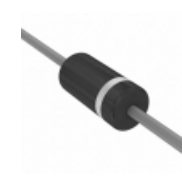
SMA5J33AHE3/5A
 TVS DIODE 33VWM 53.3VC SMA
[Vishay Semiconductor Diodes Division](#)

RFQ



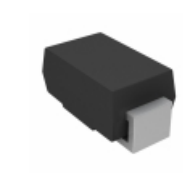
SMBJ3V3-M3/52
 TVS DIODE 3.3VWM - DO-215AA
[Vishay Semiconductor Diodes Division](#)

RFQ



P6KE350A-E3/73
 TVS DIODE 300VWM 482VC DO204AC
[Vishay Semiconductor Diodes Division](#)

RFQ



SMA5J9.0CA-M3/5A
 TVS DIODE 9VWM 15.4VC DO-214AC
[Vishay Semiconductor Diodes Division](#)

RFQ



SMBG8.0A-M3/5B
 TVS DIODE 8VWM 13.6VC DO-215AA
[Vishay Semiconductor Diodes Division](#)

RFQ



1SMC10AT3G
 TVS DIODE 10VWM 17VC SMC
[Littelfuse Inc.](#)

RFQ



SM15T100A-M3/57T
 TVS DIODE 85.5VWM 137VC DO214AB
[Vishay Semiconductor Diodes Division](#)

RFQ



SM15T24A-M3/57T
 TVS DIODE 20.5VWM 33.2VC DO-214A
[Vishay Semiconductor Diodes Division](#)

RFQ



SMBG100A-M3/52
 TVS DIODE 100VWM 162VC DO-215AA
[Vishay Semiconductor Diodes Division](#)

RFQ