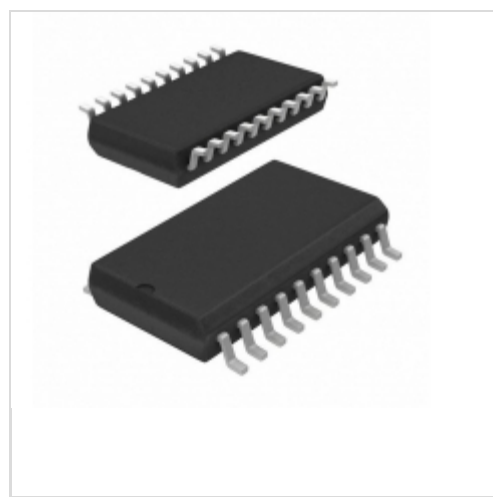


## L9826TR



**STMicroelectronics**

IC DRIVER OCTAL LOW SIDE SOIC-20

Lead free / RoHS Compliant

Integrated Circuits (ICs)

[L9826TR.pdf](#)

**Buy Now**

Images are for reference only.

See Product Specifications for product details.

If you are interested to buy L9826TR, Just Email us.

Sales@zeanoit.com

our sales team will reply you within 24 hours

**Out Stock**

**0 pcs**

Minimum: 1

Multiples: 100

Manufacturer lead time 10 weeks

### Shopping Process

**1**

**Confirm the product**

**2**

**submit the order**

**3**

**payment**

**4**

**wait for delivery**

**5**

**receive the goods**

### Specifications

<b>Voltage - Supply (Vcc/Vdd):</b>	4.5 V ~ 5.5 V
<b>Voltage - Load:</b>	45V (Max)
<b>Switch Type:</b>	Latched Driver
<b>Supplier Device Package:</b>	20-SOIC
<b>Series:</b>	-
<b>Rds On (Typ):</b>	1.5 Ohm
<b>Ratio - Input:Output:</b>	1:8
<b>Packaging:</b>	Tape & Reel (TR)
<b>Package / Case:</b>	20-SOIC (0.295", 7.50mm Width)
<b>Output Type:</b>	N-Channel
<b>Output Configuration:</b>	Low Side
<b>Operating Temperature:</b>	-40°C ~ 150°C (TJ)
<b>Number of Outputs:</b>	8
<b>Interface:</b>	SPI
<b>Input Type:</b>	-
<b>Features:</b>	-
<b>Fault Protection:</b>	-
<b>Current - Output (Max):</b>	450mA

### Related products



**L9848TR**

IC DRIVER LO/HI SIDE OCTAL 28SOI

[STMicroelectronics](#)

RFQ



**L9825TR**

IC DRIVER OCT LO SIDE PWR 20SOIC

[STMicroelectronics](#)

RFQ



**L9856**

IC DRIVER HIGH SIDE HV 8-SOIC

[STMicroelectronics](#)

RFQ



**L9826013TR**

[ST](#)

RFQ



**L9826**

IC DRIVER OCTAL LOW SIDE SOIC-20

[STMicroelectronics](#)

RFQ



**L9848**

IC DRIVER LO/HI SIDE OCT 28SOIC

[STMicroelectronics](#)

RFQ



**L9829**

in stock

[ST](#)

RFQ



**L9856-LF**

IC DRIVER HIGH SIDE 8SOIC

[STMicroelectronics](#)

RFQ



**L9823TR-6**

in stock

[ST](#)

RFQ



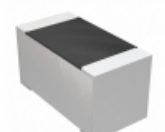
**L9825**

IC DRIVER OCT LOW SIDE POWERSO20

[STMicroelectronics](#)

RFQ

### Guess You May Looking For

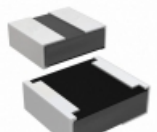


**M55342E12B7B50RT5**

RES SMD 7.5K OHM 0.1% 1/10W 0603

[Vishay Dale](#)

RFQ

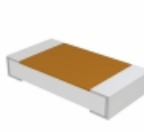


**RCP0505W220RGS2**

RES SMD 220 OHM 2% 5W 0505

[Vishay Dale](#)

RFQ

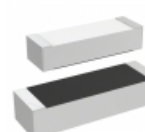


**D55342E07B16B7RT5**

RES SMD 16.7K OHM 0.1% 1/4W 1206

[Vishay Dale](#)

RFQ

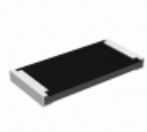


**M55342E04B4B82RT5**

RES SMD 4.82KOHM 0.1% 0.15W 1505

[Vishay Dale](#)

RFQ

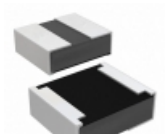


**RCP2512B1K00GED**

RES SMD 1K OHM 2% 22W 2512

[Vishay Dale](#)

RFQ



**RCP0505W75R0JED**

RES SMD 75 OHM 5% 5W 0505

[Vishay Dale](#)

RFQ

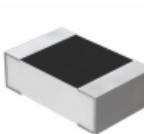


**RCP0603W1K20JS6**

RES SMD 1.2K OHM 5% 3.9W 0603

[Vishay Dale](#)

RFQ

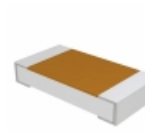


**Y16303K00000A0W**

RES SMD 3K OHM 0.05% 1/4W 1206

[Vishay Foil Resistors \(Division of Vishay Precisio](#)

RFQ

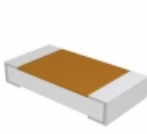


**D55342E07B487ARWS**

RES SMD 487 OHM 0.1% 1/4W 1206

[Vishay Dale](#)

RFQ



**D55342E07B14E0RWS**

RES SMD 14K OHM 1% 1/4W 1206

[Vishay Dale](#)

RFQ

