

MAX16059ATT17+



[Maxim Integrated](#)

IC SUPERVISOR OD 1.7V 6-TDFN

RoHS Compliant

Integrated Circuits (ICs)

[1.MAX16059ATT17+.pdf](#)

[2.MAX16059ATT17+.pdf](#)

Buy Now

In Stock

110 pcs

Minimum:1

Multiples:100

Manufacturer lead time 10 weeks

PRICE

1 pcs	\$4.22
10 pcs	\$3.978
25 pcs	\$3.182
50 pcs	\$3.023
100 pcs	\$2.785
250 pcs	\$2.641
500 pcs	\$1.989

We can supply Maxim Integrated MAX16059ATT17+, use the request quote form to request MAX16059ATT17+ pirce, Maxim Integrated Datasheet PDF and lead time.Zeanoit.com is a professional electronic components distributor. With 3+ Million line items of available electronic components can ship in short lead-time, over 250 thousand part numbers of electronic components in stock for immediately delivery, which may include part number MAX16059ATT17+.The price and lead time for MAX16059ATT17+ depending on the quantity required, availability and warehouse location.

Shopping Process

1

Confirm the product

2

submit the order

3

payment

4

wait for delivery

5

receive the goods

Specifications

Voltage - Threshold:	1.665V
Type:	Simple Reset/Power-On Reset
Supplier Device Package:	6-TDFN-EP (3x3)
Series:	-
Reset Timeout:	Adjustable/Selectable
Reset:	Active Low
Packaging:	Tube
Package / Case:	6-WDFN Exposed Pad
Output:	Open Drain or Open Collector
Operating Temperature:	-40°C ~ 125°C (TA)
Number of Voltages Monitored:	1
Mounting Type:	Surface Mount

Related products

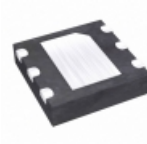


MAX16059

in stock

[MAXIM](#)

RFQ

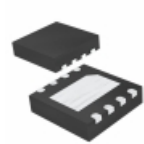


MAX16059ATT21+T

IC SUPERVISOR OD 2.1V 6-TDFN

[Maxim Integrated](#)

RFQ



MAX16058ATT46+T

IC SUPERVISOR OD 4.6V 8-TDFN

[Maxim Integrated](#)

RFQ

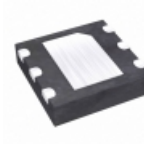


MAX16058ATA__+T

in stock

[MAXIM](#)

RFQ



MAX16059ATT19+T

IC SUPERVISOR OD 1.9V 6-TDFN

[Maxim Integrated](#)

RFQ

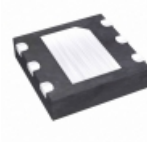


MAX16058ATT29+T

IC SUPERVISOR OD 2.9V 8-TDFN

[Maxim Integrated](#)

RFQ

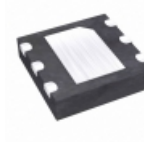


MAX16059ATT17+T

IC SUPERVISOR OD 1.7V 6-TDFN

[Maxim Integrated](#)

RFQ

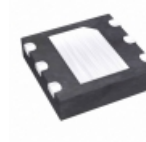


MAX16059ATT20+T

IC SUPERVISOR OD 2.0V 6-TDFN

[Maxim Integrated](#)

RFQ

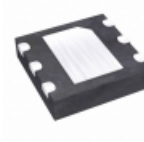


MAX16059ATT19+

IC SUPERVISOR OD 1.9V 6-TDFN

[Maxim Integrated](#)

RFQ



MAX16059ATT16+T

IC SUPERVISOR OD 1.6V 6-TDFN

[Maxim Integrated](#)

RFQ

Guess You May Looking For



9T04021A5620CBHF3

RES SMD 562 OHM 0.25% 1/16W 0402

[Yageo](#)

RFQ



RG1005P-133-B-T1

RES SMD 13K OHM 0.1% 1/16W 0402

[Susumu](#)

RFQ

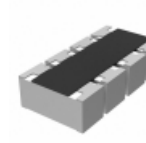


RG1608P-2433-C-T5

RES SMD 243KOHM 0.25% 1/10W 0603

[Susumu](#)

RFQ



YC124-FR-071K5L

RES ARRAY 4 RES 1.5K OHM 0804

[Yageo](#)

RFQ



YC248-FR-0712R4L

RES ARRAY 8 RES 12.4 OHM 1606

[Yageo](#)

RFQ



RSF2JTR330

RES 0.33 OHM 2W 5% AXIAL

[Stackpole Electronics Inc.](#)

RFQ



MRS25000C9313FCT00

RES 931K OHM 0.6W 1% AXIAL

[Vishay BC Components](#)

RFQ



CMF60480R00FKR6

RES 480 OHM 1W 1% AXIAL

[Vishay Dale](#)

RFQ



CMF6013R000FHR6

RES 13 OHM 1W 1% AXIAL

[Vishay Dale](#)

RFQ



RN55E1151FRE6

RES 1.15K OHM 1/8W 1% AXIAL

[Vishay Dale](#)

RFQ