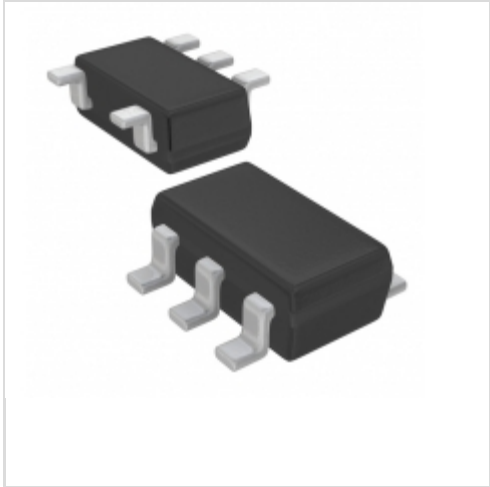


XC6122C621MR-G




[Torex Semiconductor Ltd.](#)

IC WATCHDOG TIMER SOT-25

Lead free / RoHS Compliant

Integrated Circuits (ICs)

 [XC6122C621MR-G.pdf](#)

 [Buy Now](#)

Out Stock

0 pcs

Mininum:1

Multiples:100

Manufacturer lead time 10 weeks

Images are for reference only.

See Product Specifications for product details.

If you are interested to buy XC6122C621MR-G,Just Email us.

[Sales@zeanoit.com](mailto:Sales@zeanoit.com)

our sales team will reply you within 24 hours

Shopping Process

1

Confirm the product



2

submit the order



3

payment



4

wait for delivery



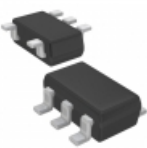
5

receive the goods

Specifications

Voltage - Threshold:	2.1V
Type:	Watchdog Circuit
Supplier Device Package:	SOT-25
Series:	-
Reset Timeout:	1.6 s Typical
Reset:	Active Low
Packaging:	Tape & Reel (TR)
Package / Case:	SC-74A, SOT-753
Output:	Open Drain or Open Collector
Operating Temperature:	-40°C ~ 85°C (TA)
Number of Voltages Monitored:	1
Mounting Type:	Surface Mount

Related products



**XC6122C620MR-G**

IC WATCHDOG TIMER SOT-25

[Torex Semiconductor Ltd](#)

RFQ



**XC6122C626ER-G**

IC WATCHDOG TIMER 6-USP

[Torex Semiconductor Ltd](#)

RFQ



**XC6122C619MR-G**

IC WATCHDOG TIMER SOT-25

[Torex Semiconductor Ltd](#)

RFQ



**XC6122C621ER-G**

IC WATCHDOG TIMER 6-USP

[Torex Semiconductor Ltd](#)

RFQ



**XC6122C622MR-G**

IC WATCHDOG TIMER SOT-25

[Torex Semiconductor Ltd](#)

RFQ



**XC6122C622ER-G**

IC WATCHDOG TIMER 6-USP

[Torex Semiconductor Ltd](#)

RFQ



**XC6122C625ER-G**

IC WATCHDOG TIMER 6-USP

[Torex Semiconductor Ltd](#)

RFQ



**XC6122C625MR-G**

IC WATCHDOG TIMER SOT-25

[Torex Semiconductor Ltd](#)

RFQ



**XC6122C619ER-G**

IC WATCHDOG TIMER 6-USP

[Torex Semiconductor Ltd](#)

RFQ



**XC6122C620ER-G**

IC WATCHDOG TIMER 6-USP

[Torex Semiconductor Ltd](#)

RFQ

Guess You May Looking For



**9T04021A8451BAHF3**

RES SMD 8.45KOHM 0.1% 1/16W 0402

[Yageo](#)

RFQ

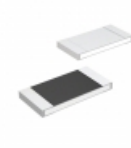


**RGH2012-2E-P-393-B**

RES SMD 39K OHM 0.1% 1/4W 0805

[Susumu](#)

RFQ



**MCR18EZPF59R0**

RES SMD 59 OHM 1% 1/4W 1206

[Rohm Semiconductor](#)

RFQ



**RG2012P-1622-C-T5**

RES SMD 16.2KOHM 0.25% 1/8W 0805

[Susumu](#)

RFQ

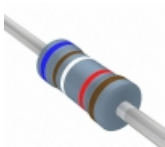


**RSF2JTR330**

RES 0.33 OHM 2W 5% AXIAL

[Stackpole Electronics Inc.](#)

RFQ



**MFR-25FBF52-61K9**

RES 61.9K OHM 1/4W 1% AXIAL

[Yageo](#)

RFQ

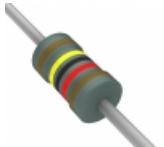


**LR0204F180R**

RES 180 OHM 1/4W 1% AXIAL

[TE Connectivity Passive Product](#)

RFQ

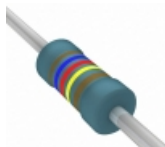


**RNF14FTC14K0**

RES 14K OHM 1/4W 1% AXIAL

[Stackpole Electronics Inc.](#)

RFQ

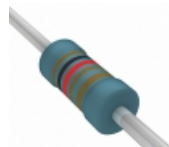


**MRS16000C1629FRP00**

RES 16.2 OHM 0.4W 1% AXIAL

[Vishay BC Components](#)

RFQ



**MBB02070C1021FRP00**

RES 1.02K OHM 0.6W 1% AXIAL

[Vishay BC Components](#)

RFQ