

**CC1111F16RSPR**


N/A  
 IC RF TXRX+MCU ISM<1GHZ 36-VFQFN  
 Lead free / RoHS Compliant  
 RF/IF and RFID

**Buy Now**

- 1.Please confirm the Detail which include the part no.and the manufacturer of the products when ordering.
- 2.If you have bill of material(BOM) list require to quote.you could send to our email.
- 3.You can email us to change the order details before shipment.
- 4.Orders cannot be canceled after shipping the packages.

**Shopping Process**
**1**
**Confirm the product**
**2**
**submit the order**
**3**
**payment**
**4**
**wait for delivery**
**5**
**receive the goods**
**Specifications**

<b>Voltage - Supply:</b>	3 V ~ 3.6 V
<b>Type:</b>	TxRx + MCU
<b>Series:</b>	-
<b>Serial Interfaces:</b>	I <sup>2</sup> S, USART, USB
<b>Sensitivity:</b>	-112dBm
<b>RF Family/Standard:</b>	General ISM < 1GHz
<b>Protocol:</b>	-
<b>Power - Output:</b>	10dBm
<b>Packaging:</b>	Tape & Reel (TR)
<b>Package / Case:</b>	36-VFQFN Exposed Pad
<b>Operating Temperature:</b>	0°C ~ 85°C
<b>Modulation:</b>	2FSK, ASK, GFSK, MSK, OOK
<b>Memory Size:</b>	16kB Flash, 2kB SRAM
<b>GPIO:</b>	19
<b>Frequency:</b>	300MHz ~ 348MHz, 391MHz ~ 464MHz, 782MHz ~ 928MHz
<b>Data Rate (Max):</b>	500kBaud
<b>Current - Transmitting:</b>	18mA ~ 36.2mA
<b>Current - Receiving:</b>	16.2mA ~ 21.5mA

**Related products**

**CC1111F16RSPRG3**

IC RF TXRX+MCU ISM<1GHZ 36-VFQFN  
[N/A](#)

[RFQ](#)

**CC1111F32RSPR**

IC RF TXRX+MCU ISM<1GHZ 36-VFQFN  
[N/A](#)

[RFQ](#)

**CC1110F8RSPRG3**

IC RF TXRX+MCU ISM<1GHZ 36-VFQFN  
[N/A](#)

[RFQ](#)

**CC1111F32RSPRG3**

IC RF TXRX+MCU ISM<1GHZ 36-VFQFN  
[N/A](#)

[RFQ](#)

**CC1111F32RSP**

IC RF TXRX+MCU ISM<1GHZ 36-VFQFN  
[N/A](#)

[RFQ](#)

**CC1111EMK868-915**

KIT EVAL MODULE FOR CC1111  
[N/A](#)

[RFQ](#)

**CC1111F16RSP**

IC RF TXRX+MCU ISM<1GHZ 36-VFQFN  
[N/A](#)

[RFQ](#)

**CC1110F8RSPR**

IC RF TXRX+MCU ISM<1GHZ 36-VFQFN  
[N/A](#)

[RFQ](#)

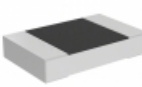
**CC1111F16RSPG3**

IC RF TXRX+MCU ISM<1GHZ 36-VFQFN  
[N/A](#)

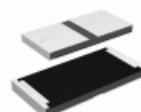
[RFQ](#)

**CC1111F32RSPG3**

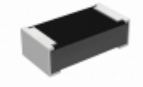
IC RF TXRX+MCU ISM<1GHZ 36-VFQFN  
[N/A](#)

[RFQ](#)
**Guess You May Looking For**

**PLTT0805Z1152AGT5**

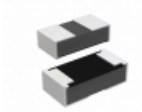
RES SMD 11.5KOHM 0.05% 1/4W 0805  
[Vishay Thin Film](#)

[RFQ](#)

**RCP2512W160RGED**

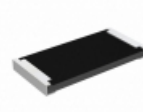
RES SMD 160 OHM 2% 22W 2512  
[Vishay Dale](#)

[RFQ](#)

**RCP0603B43R0JED**

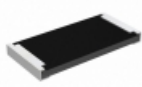
RES SMD 43 OHM 5% 3.9W 0603  
[Vishay Dale](#)

[RFQ](#)

**RCP0603W820RGS6**

RES SMD 820 OHM 2% 3.9W 0603  
[Vishay Dale](#)

[RFQ](#)

**RCP2512B150RGET**

RES SMD 150 OHM 2% 22W 2512  
[Vishay Dale](#)

[RFQ](#)

**RCP2512B82R0GWB**

RES SMD 82 OHM 2% 22W 2512  
[Vishay Dale](#)

[RFQ](#)

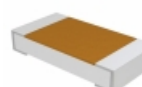
**D55342E07B2B64RWS**

RES SMD 2.64K OHM 0.1% 1/4W 1206  
[Vishay Dale](#)

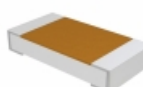
[RFQ](#)

**Y1172100R000B9W**

RES SMD 100 OHM 0.1% 1/10W 0805  
[Vishay Foil Resistors \(Division of Vishay Precisio](#)

[RFQ](#)

**D55342E07B100KRWS**

RES SMD 100K OHM 5% 1/4W 1206  
[Vishay Dale](#)

[RFQ](#)

**D55342E07B232DRWS**

RES SMD 232 OHM 1% 1/4W 1206  
[Vishay Dale](#)

[RFQ](#)