

**INA169NA/250**


N/A  
 IC CURRENT MONITOR 0.5% SOT23-5  
 Lead free / RoHS Compliant  
 Integrated Circuits (ICs)

**Buy Now**

Part No. INA169NA/250 Is this a common-used part? : Yes  
 Shipped from : HK or Singapore warehouse  
 Same model may have multiple batches, images only for reference.  
 ECAD Models : Contact us to get  
 Email:sales@zeanoit.com

**Out Stock**
**0 pcs**

Minimum:1

Multiples:1

Manufacturer lead time 10 weeks

**PRICE**

250 pcs	\$2.005
1250 pcs	\$1.10

## Shopping Process

**1**
**Confirm the product**
**2**
**submit the order**
**3**
**payment**
**4**
**wait for delivery**
**5**
**receive the goods**

## Specifications

<b>Voltage - Input:</b>	2.7 V ~ 60 V
<b>Supplier Device Package:</b>	SOT-23-5
<b>Series:</b>	-
<b>Sensing Method:</b>	High-Side
<b>Packaging:</b>	Tape & Reel (TR)
<b>Package / Case:</b>	SC-74A, SOT-753
<b>Operating Temperature:</b>	-40°C ~ 85°C
<b>Mounting Type:</b>	Surface Mount
<b>Function:</b>	Current Monitor
<b>Current - Output:</b>	-
<b>Accuracy:</b>	±0.5%

## Related products


**INA169QPWRQ1**

IC CURRENT MONITOR 0.5% 8TSSOP  
 N/A

RFQ


**INA169QPWRG4Q1**

IC CURRENT SHUNT MONITOR 8TSSOP  
 N/A

RFQ


**INA168QDBVRQ1**

IC CURRENT SHUNT MONITOR SOT23-5  
 N/A

RFQ


**INA168NA/3KG4**

IC CURRENT MONITOR 0.5% SOT23-5  
 N/A

RFQ


**INA169NA/3K**

IC CURRENT MONITOR 0.5% SOT23-5  
 N/A

RFQ


**INA169NA**

in stock  
 N/A

RFQ


**INA168QPWRQ1**

IC CURRENT MONITOR 0.5% 8TSSOP  
 N/A

RFQ


**INA169NA/250G4**

IC CURRENT MONITOR 0.5% SOT23-5  
 N/A

RFQ


**INA168QPWRG4Q1**

IC CURRENT SHUNT MONITOR 8TSSOP  
 N/A

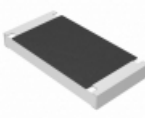
RFQ


**INA169NA/3KG4**

IC CURRENT MONITOR 0.5% SOT23-5  
 N/A

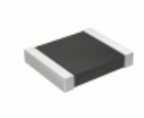
RFQ

## Guess You May Looking For


**ERJ-S1DF9530U**

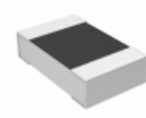
RES SMD 953 OHM 1% 3/4W 2010  
 Panasonic Electronic Components

RFQ


**RT1210BRD073K92L**

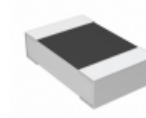
RES SMD 3.92K OHM 0.1% 1/4W 1210  
 Yageo

RFQ


**CPF0805B576RE1**

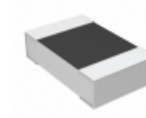
RES SMD 576 OHM 0.1% 1/10W 0805  
 TE Connectivity Passive Product

RFQ


**CPF0805B53K6E1**

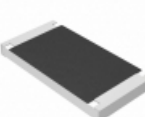
RES SMD 53.6KOHM 0.1% 1/10W 0805  
 TE Connectivity Passive Product

RFQ


**CPF0805B280KE1**

RES SMD 280K OHM 0.1% 1/10W 0805  
 TE Connectivity Passive Product

RFQ


**ERJ-S1TF9532U**

RES SMD 95.3K OHM 1% 1W 2512  
 Panasonic Electronic Components

RFQ


**PE2512FKE070R012L**

RES SMD 0.012 OHM 1% 1W 2512  
 Yageo

RFQ


**RPC2010FT332K**

RES SMD 332K OHM 1% 3/4W 2010  
 Stackpole Electronics Inc.

RFQ


**RT1206CRC07261KL**

RES SMD 261K OHM 0.25% 1/4W 1206  
 Yageo

RFQ


**RPC2010FT1R05**

RES SMD 1.05 OHM 1% 3/4W 2010  
 Stackpole Electronics Inc.

RFQ