

AT27BV020-90JC



Microchip Technology

IC OTP 2MBIT 90NS 32PLCC
Contains lead / RoHS non-compliant
Integrated Circuits (ICs)

[AT27BV020-90JC.pdf](#)

Buy Now

Images are for reference only.

See Product Specifications for product details.

If you are interested to buy AT27BV020-90JC, Just Email us.

Sales@zeanoit.com

our sales team will reply you within 24 hours

Shopping Process

1

Confirm the product



2

submit the order



3

payment



4

wait for delivery



5

receive the goods

Specifications

Voltage - Supply:	2.7 V ~ 3.6 V, 4.5 V ~ 5.5 V
Supplier Device Package:	32-PLCC
Speed:	90ns
Series:	-
Packaging:	Tube
Package / Case:	32-LCC (J-Lead)
Operating Temperature:	0°C ~ 70°C (TC)
Memory Type:	Non-Volatile
Memory Size:	2Mb (256K x 8)
Memory Format:	EPROM
Interface:	Parallel

Related products



AT27BV020-90JI
IC OTP 2MBIT 90NS 32PLCC
[Microchip Technology](#)

RFQ



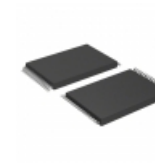
AT27BV020-90TC
IC OTP 2MBIT 90NS 32TSOP
[Microchip Technology](#)

RFQ



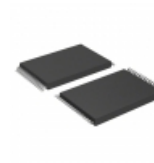
AT27BV020-90CI
in stock
[ATMEL](#)

RFQ



AT27BV020-15VI
IC OTP 2MBIT 150NS 32VSOP
[Microchip Technology](#)

RFQ



AT27BV020-15VC
IC OTP 2MBIT 150NS 32VSOP
[Microchip Technology](#)

RFQ



AT27BV020-90JU
IC OTP 2MBIT 90NS 32PLCC
[Microchip Technology](#)

RFQ



AT27BV020-90TU
IC OTP 2MBIT 90NS 32TSOP
[Microchip Technology](#)

RFQ



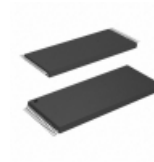
AT27BV020-90CC
in stock
[ATMEL](#)

RFQ



AT27BV020-20CI
[ATMEL](#)

RFQ



AT27BV020-90TI
IC OTP 2MBIT 90NS 32TSOP
[Microchip Technology](#)

RFQ

Guess You May Looking For



RC1206FR-0746R4L
RES SMD 46.4 OHM 1% 1/4W 1206
[Yageo](#)

RFQ



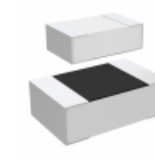
RT0805DRE072K37L
RES SMD 2.37K OHM 0.5% 1/8W 0805
[Yageo](#)

RFQ



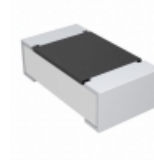
RV1206FR-07680KL
RES SMD 680K OHM 1% 1/4W 1206
[Yageo](#)

RFQ



CRGV0805J4M7
RES SMD 4.7M OHM 5% 1/8W 0805
[TE Connectivity Passive Product](#)

RFQ



CRCW060325K5FKTC
RES SMD 25.5K OHM 1% 1/10W 0603
[Vishay Dale](#)

RFQ



CRCW12061K69FKTA
RES SMD 1.69K OHM 1% 1/4W 1206
[Vishay Dale](#)

RFQ



TRR03EZPJ201
RES SMD 200 OHM 5% 1/10W 0603
[Rohm Semiconductor](#)

RFQ



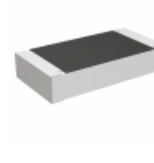
RNCF0402DTE1K80
RES SMD 1.8K OHM 0.5% 1/16W 0402
[Stackpole Electronics Inc.](#)

RFQ



CSR1206JKR800
RES SMD 0.8 OHM 5% 1/2W 1206
[Stackpole Electronics Inc.](#)

RFQ



CRCW120684K5FHEAP
RES SMD 84.5K OHM 1% 1/4W 1206
[Vishay Dale](#)

RFQ