

MAX5057BASA+T

Maxim Integrated

IC MOSFET DRVR DUAL 8-SOIC
Lead free / RoHS Compliant
Integrated Circuits (ICs)

1.MAX5057BASA+T.pdf

2.MAX5057BASA+T.pdf

Buy Now

Out Stock

0 pcs

Minimum:1

Multiples:100

Manufacturer lead time 10 weeks

part#MAX5057BASA+T is available, see description of MAX5057BASA+T as below .

use the request quote form to request MAX5057BASA+T price and lead time.

Buy Electronic Components at zeanoit.com .we are an independent distributor of electronic components with extensive inventory in stock.

The price and lead time for MAX5057BASA+T depending on the quantity required, availability and warehouse location.Contact us today and our sales team will send you quotation soon.

Email: sales@zeanoit.com

Shopping Process
1
Confirm the product
2
submit the order
3
payment
4
wait for delivery
5
receive the goods
Specifications

Voltage - Supply:	4 V ~ 15 V
Supplier Device Package:	8-SOIC
Series:	-
Rise / Fall Time (Typ):	32ns, 26ns
Packaging:	Tape & Reel (TR)
Package / Case:	8-SOIC (0.154", 3.90mm Width)
Operating Temperature:	-40°C ~ 150°C (TJ)
Number of Drivers:	2
Mounting Type:	Surface Mount
Logic Voltage - VIL, VIH:	0.8V, 2.1V
Input Type:	Inverting, Non-Inverting
Gate Type:	N-Channel MOSFET
Driven Configuration:	Low-Side
Current - Peak Output (Source, Sink):	4A, 4A
Channel Type:	Independent

Related products


MAX5057BASA+
IC MOSFET DRVR DUAL 8-SOIC
[Maxim Integrated](#)

RFQ

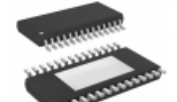

MAX5057AASA
in stock
[MAXIM](#)

RFQ

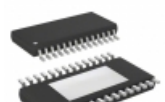

MAX5058
in stock
[MAXIM](#)

RFQ


MAX5058AUI+
IC DRVR SYNC RECT 28-TSSOP
[Maxim Integrated](#)

RFQ


MAX5058EUI
IC DRVR SYNC RECT 28-TSSOP
[Maxim Integrated](#)

RFQ


MAX5058AUI+T
IC DRVR SYNC RECT 28-TSSOP
[Maxim Integrated](#)

RFQ

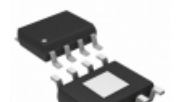

MAX5058AUI
in stock
[MAXIM](#)

RFQ

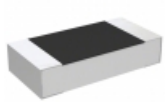

MAX5057AASA
IC MOSFET DRVR DUAL 8-SOIC
[Maxim Integrated](#)

RFQ

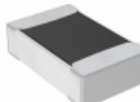

MAX5057BASA
in stock
[MAXIM](#)

RFQ


MAX5057AASA-T
IC MOSFET DRVR DUAL 8-SOIC
[Maxim Integrated](#)

RFQ
Guess You May Looking For


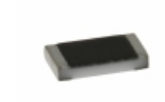
CPF1206B140KE1
RES SMD 140K OHM 0.1% 1/8W 1206
[TE Connectivity Passive Product](#)

RFQ


RNCF0805BTT4K87
RES SMD 4.87K OHM 0.1% 1/8W 0805
[Stackpole Electronics Inc.](#)

RFQ


TLM2ADR033FTD
RES SMD 0.033 OHM 1% 1/4W 0805
[TE Connectivity Passive Product](#)

RFQ


TNPW0805422RBEEA
RES SMD 422 OHM 0.1% 1/8W 0805
[Vishay Dale](#)

RFQ


RNCF2512BTC300R
RES SMD 300 OHM 0.1% 3/4W 2512
[Stackpole Electronics Inc.](#)

RFQ

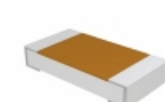

RG1608N-1541-B-T5
RES SMD 1.54KOHM 0.1% 1/10W 0603
[Susumu](#)

RFQ

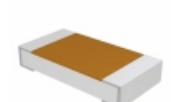

RT0805WRE07154RL
RES SMD 154 OHM 0.05% 1/8W 0805
[Yageo](#)

RFQ


RT0805WRE0723K2L
RES SMD 23.2KOHM 0.05% 1/8W 0805
[Yageo](#)

RFQ


TNPW1206620RBEEA
RES SMD 620 OHM 0.1% 1/4W 1206
[Vishay Dale](#)

RFQ


TNPW1206324RBETA
RES SMD 324 OHM 0.1% 1/4W 1206
[Vishay Dale](#)

RFQ