

MAX6865UK34D2L+T



Maxim Integrated

IC MPU SUPERVISOR SOT23-5

Lead free / RoHS Compliant

Integrated Circuits (ICs)

[1.MAX6865UK34D2L+T.pdf](#)

[2.MAX6865UK34D2L+T.pdf](#)

Buy Now

We can supply Maxim Integrated MAX6865UK34D2L+T, use the request quote form to request MAX6865UK34D2L+T price, Maxim Integrated Datasheet PDF and lead time. Zeanoit.com is a professional electronic components distributor. With 3+ Million line items of available electronic components can ship in short lead-time, over 250 thousand part numbers of electronic components in stock for immediately delivery, which may include part number MAX6865UK34D2L+T. The price and lead time for MAX6865UK34D2L+T depending on the quantity required, availability and warehouse location.

Shopping Process



1
Confirm the product



2
submit the order



3
payment



4
wait for delivery



5
receive the goods

Specifications

Voltage - Threshold:	3.4V
Type:	Simple Reset/Power-On Reset
Supplier Device Package:	SOT-23-5
Series:	-
Reset Timeout:	40 ms Minimum
Reset:	Active High
Packaging:	Tape & Reel (TR)
Package / Case:	SC-74A, SOT-753
Output:	Push-Pull, Totem Pole
Operating Temperature:	-40°C ~ 85°C (TA)
Number of Voltages Monitored:	1
Mounting Type:	Surface Mount

Related products



MAX6865UK34D3S+T
IC MPU SUPERVISOR SOT23-5
[Maxim Integrated](#)

RFQ



MAX6865UK34D4S+T
IC MPU SUPERVISOR SOT23-5
[Maxim Integrated](#)

RFQ



MAX6865UK34D1L+T
IC MPU SUPERVISOR SOT23-5
[Maxim Integrated](#)

RFQ



MAX6865UK34D2S+T
IC MPU SUPERVISOR SOT23-5
[Maxim Integrated](#)

RFQ



MAX6865UK33D6L+T
IC MPU SUPERVISOR SOT23-5
[Maxim Integrated](#)

RFQ



MAX6865UK33D5S+T
IC MPU SUPERVISOR SOT23-5
[Maxim Integrated](#)

RFQ



MAX6865UK34D4L+T
IC MPU SUPERVISOR SOT23-5
[Maxim Integrated](#)

RFQ



MAX6865UK34D3L+T
IC MPU SUPERVISOR SOT23-5
[Maxim Integrated](#)

RFQ



MAX6865UK34D1S+T
IC MPU SUPERVISOR SOT23-5
[Maxim Integrated](#)

RFQ



MAX6865UK33D6S+T
IC MPU SUPERVISOR SOT23-5
[Maxim Integrated](#)

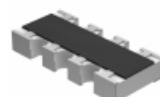
RFQ

Guess You May Looking For



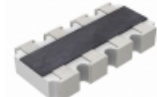
MCR006YZPF1803
RES SMD 180K OHM 1% 1/20W 0201
[Rohm Semiconductor](#)

RFQ



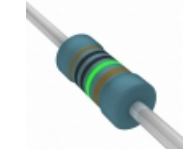
CRA06E0837K50JTA
RES ARRAY 4 RES 7.5K OHM 1206
[Vishay Dale](#)

RFQ



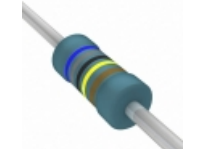
AF164-FR-0797R6L
RES ARRAY 4 RES 97.6 OHM 1206
[Yageo](#)

RFQ



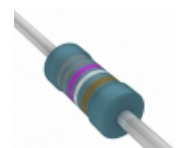
HVR3700001005FR500
RES 10M OHM 1/2W 1% AXIAL
[Vishay BC Components](#)

RFQ



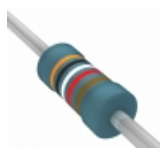
MRS16000C6809FCT00
RES 68 OHM 0.4W 1% AXIAL
[Vishay BC Components](#)

RFQ



MRS25000C8878FRP00
RES 8.87 OHM 0.6W 1% AXIAL
[Vishay BC Components](#)

RFQ



MBB02070C3092FC100
RES 30.9K OHM 0.6W 1% AXIAL
[Vishay BC Components](#)

RFQ



RN60D21R0FRE6
RES 21 OHM 1/4W 1% AXIAL
[Vishay Dale](#)

RFQ



RN60C3500FB14
RES 350 OHM 1/4W 1% AXIAL
[Vishay Dale](#)

RFQ



RNF14BTE22K3
RES 22.3K OHM 1/4W .1% AXIAL
[Stackpole Electronics Inc.](#)

RFQ