

LV8099CT-TE-L-H



[AMI Semiconductor / ON Semiconductor](#)

IC MOTOR DRIVER S111 WLP
Lead free / RoHS Compliant
Integrated Circuits (ICs)

Buy Now

Images are for reference only.

See Product Specifications for product details.

If you are interested to buy LV8099CT-TE-L-H, Just Email us.

Sales@zeanoit.com

our sales team will reply you within 24 hours

Shopping Process

1

Confirm the product

2

submit the order

3

payment

4

wait for delivery

5

receive the goods

Specifications

Voltage - Supply:	2.2 V ~ 5 V
Voltage - Load:	2.2 V ~ 5 V
Technology:	Bi-CMOS
Step Resolution:	-
Series:	-
Packaging:	Tape & Reel (TR)
Package / Case:	-
Output Configuration:	Low Side
Operating Temperature:	-30°C ~ 85°C (TA)
Motor Type - Stepper:	-
Motor Type - AC, DC:	Voice Coil Motor
Interface:	I ² C
Function:	Driver - Fully Integrated, Control and Power Stage
Current - Output:	150mA
Applications:	General Purpose

Related products



LV8093CSL-TE-L-H
[SANYO](#)

RFQ



LV8105W-MPB-E
IC MOTOR CONTROLLER PAR SQFP48
[ON Semiconductor](#)

RFQ



LV8105W-TLM-E
IC MOTOR CONTROLLER PAR 48SQFP
[ON Semiconductor](#)

RFQ



LV8094CT-TE-L-H
IC PIEZO ACTUATOR DRIVER 8WLP
[ON Semiconductor](#)

RFQ



LV8104V-TLM-H
IC MOTOR CONTROLLER PAR 44SSOP
[ON Semiconductor](#)

RFQ



LV8095LQ-TE-B-E
[SANYO](#)

RFQ



LV8093CSL-TE-L-E
[ST](#)

RFQ



LV810FI
IC CLK BUFFER 1:10 133MHZ 20SSOP
[IDT, Integrated Device Technology Inc](#)

RFQ



LV8099CS-TE-H
[SANYO](#)

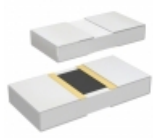
RFQ



LV8104V-MPB-H
IC MOTOR CONTROLLER PAR SSOP44
[ON Semiconductor](#)

RFQ

Guess You May Looking For



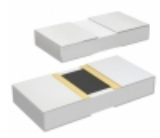
PHP00805E1300BBT1
RES SMD 130 OHM 0.1% 5/8W 0805
[Vishay Thin Film](#)

RFQ



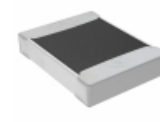
SM6227FT2K15
RES SMD 2.15K OHM 1% 3W 6227
[Stackpole Electronics Inc.](#)

RFQ



PHP00805H1020BBT1
RES SMD 102 OHM 0.1% 5/8W 0805
[Vishay Thin Film](#)

RFQ



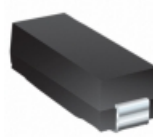
TNPW121078R7BEEN
RES SMD 78.7 OHM 0.1% 1/3W 1210
[Vishay Dale](#)

RFQ



SM8035FT150R
RES SMD 150 OHM 1% 4W 8035
[Stackpole Electronics Inc.](#)

RFQ



PWR1913WR100FE
RES SMD 0.1 OHM 1% 1/2W 1913
[Bourns Inc.](#)

RFQ



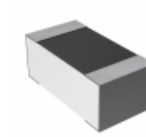
RG3216V-2670-D-T5
RES SMD 267 OHM 0.5% 1/4W 1206
[Susumu](#)

RFQ



RCP0603W330RJS3
RES SMD 330 OHM 5% 3.9W 0603
[Vishay Dale](#)

RFQ



4-1879361-1
RES SMD 15K OHM 0.1% 1/16W 0603
[TE Connectivity Passive Product](#)

RFQ



RG1608V-302-W-T1
RES SMD 3K OHM 0.05% 1/10W 0603
[Susumu](#)

RFQ