

PD0409J5050S2HF



Anaren

IC POWER DIVIDER RF 0805
Lead free / RoHS Compliant
RF/IF and RFID

[PD0409J5050S2HF.pdf](#)

Buy Now

Out Stock

0 pcs

Minimum:1

Multiples:100

Manufacturer lead time 10 weeks

Images are for reference only.

See Product Specifications for product details.

If you are interested to buy PD0409J5050S2HF,Just Email us.

Sales@zeanoit.com

our sales team will reply you within 24 hours

Shopping Process

1

Confirm the product

2

submit the order

3

payment

4

wait for delivery

5

receive the goods

Specifications

Specifications:	-
Size / Dimension:	0.051" L x 0.083" W (1.30mm x 2.10mm)
Series:	Xinger®
Packaging:	Tape & Reel (TR)
Package / Case:	0805 (2012 Metric), 6 PC Pad
Insertion Loss:	0.6dB
Frequency:	400MHz ~ 900MHz

Related products



PD02B104
DISPLAY PLASMA GRAPHIC 128X64MOD
[Microsemi Corporation](#)

RFQ



PD09-73
[ALPHA](#)

RFQ



PD020D02507S51
DISPLAY PLASMA AVIONIC RADIO
[Vishay Dale](#)

RFQ



PD0810J5050S2HF
POWER DIVIDER 800-1000MHZ 0805
[Anaren](#)

RFQ



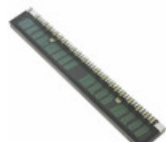
PD0409J7575S2HF
POWER DIVIDER 400-900MHZ 0805
[Anaren](#)

RFQ



PD09-73LF
SPLITTER/COMBINER 0.81-0.96GHZ
[Skyworks Solutions Inc.](#)

RFQ



PD020D02505S51
DISPLAY PLASMA AVIONIC RADIO
[Vishay Dale](#)

RFQ



PD09-12LF
[SKYWORKS](#)

RFQ



PD0200WJ30238BJ1
CAP CER 3000PF 14KV R85 DISK
[Vishay Beyschlag](#)

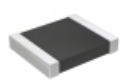
RFQ



PD02D104
DISPLAY PLASMA GRAPHIC 128X64MOD
[Microsemi Corporation](#)

RFQ

Guess You May Looking For



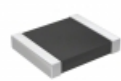
RT1210WRD0729K4L
RES SMD 29.4KOHM 0.05% 1/4W 1210
[Yageo](#)

RFQ



RG1608V-3091-W-T1
RES SMD 3.09K OHM 1/10W 0603
[Susumu](#)

RFQ



RT1210WRD072K7L
RES SMD 2.7K OHM 0.05% 1/4W 1210
[Yageo](#)

RFQ



RT1206WRC071K6L
RES SMD 1.6K OHM 0.05% 1/4W 1206
[Yageo](#)

RFQ



RT1206WRC07121KL
RES SMD 121K OHM 0.05% 1/4W 1206
[Yageo](#)

RFQ



RT1206WRC0714R7L
RES SMD 14.7 OHM 0.05% 1/4W 1206
[Yageo](#)

RFQ



RT1206WRC07270KL
RES SMD 270K OHM 0.05% 1/4W 1206
[Yageo](#)

RFQ



RT1206WRC07348RL
RES SMD 348 OHM 0.05% 1/4W 1206
[Yageo](#)

RFQ



RG1005V-1740-W-T1
RES SMD 174 OHM 0.05% 1/16W 0402
[Susumu](#)

RFQ



RG1005V-1541-W-T1
RES SMD 1.54K OHM 1/16W 0402
[Susumu](#)

RFQ