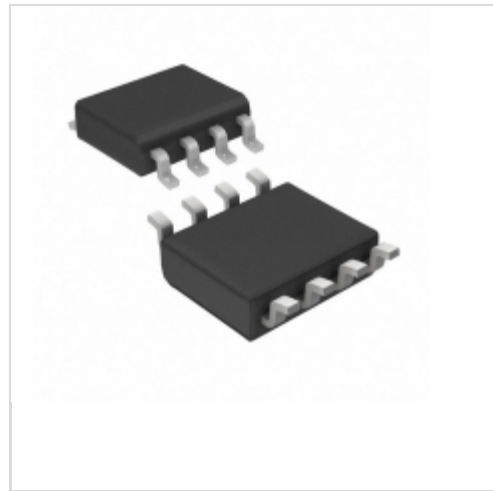


## L6388ED013TR



**STMicroelectronics**

IC DRIVER HI/LO SIDE HV 8-SOIC

Lead free / RoHS Compliant

Integrated Circuits (ICs)

[L6388ED013TR.pdf](#)

**Buy Now**

We can supply STMicroelectronics L6388ED013TR, use the request quote form to request L6388ED013TR price, STMicroelectronics Datasheet PDF and lead time. Zeano.com is a professional electronic components distributor. With 3+ Million line items of available electronic components can ship in short lead-time, over 250 thousand part numbers of electronic components in stock for immediate delivery, which may include part number L6388ED013TR. The price and lead time for L6388ED013TR depending on the quantity required, availability and warehouse location.

**In Stock**

**394 pcs**

Minimum: 1

Multiples: 100

Manufacturer lead time 10 weeks

### PRICE

1 pcs	\$1.61
10 pcs	\$1.447
100 pcs	\$1.163
500 pcs	\$0.955
1000 pcs	\$0.792

## Shopping Process

**1**

Confirm the product

**2**

submit the order

**3**

payment

**4**

wait for delivery

**5**

receive the goods

## Specifications

<b>Voltage - Supply:</b>	17V (Max)
<b>Supplier Device Package:</b>	8-SO
<b>Series:</b>	-
<b>Rise / Fall Time (Typ):</b>	70ns, 40ns
<b>Packaging:</b>	Original-Reel®
<b>Package / Case:</b>	8-SOIC (0.154", 3.90mm Width)
<b>Operating Temperature:</b>	-40°C ~ 125°C (TJ)
<b>Number of Drivers:</b>	2
<b>Mounting Type:</b>	Surface Mount
<b>Logic Voltage - VIL, VIH:</b>	1.1V, 1.8V
<b>Input Type:</b>	Inverting
<b>High Side Voltage - Max (Bootstrap):</b>	600V
<b>Gate Type:</b>	IGBT, N-Channel MOSFET
<b>Driven Configuration:</b>	Half-Bridge
<b>Current - Peak Output (Source, Sink):</b>	400mA, 650mA
<b>Channel Type:</b>	Independent

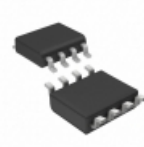
## Related products



**L6388ED013TR/L6388ED**

ST

RFQ

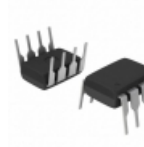


**L6388ED**

IC DRIVER HI/LO SIDE HV 8-SOIC

STMicroelectronics

RFQ



**L6388E**

IC DRIVER HI/LO SIDE HV 8-DIP

STMicroelectronics

RFQ



**L6390N**

ST

RFQ



**L6388D013TR**

IC DRIVER HI/LO SIDE HV 8-SOIC

STMicroelectronics

RFQ



**L6388ED-11F**

ST

RFQ



**L6391D**

IC DRIVER HV HI/LOW SIDE 14SO

STMicroelectronics

RFQ



**L6390D**

IC DRIVER HV HI/LOW SIDE 16SO

STMicroelectronics

RFQ



**L6388D**

in stock

ST

RFQ



**L6390DTR**

IC DRIVER HV HI/LOW SIDE 16SO

STMicroelectronics

RFQ

## Guess You May Looking For



**ERJ-B1AJ392U**

RES SMD 3.9K OHM 1W 2010 WIDE

Panasonic Electronic Components

RFQ

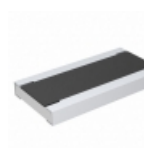


**RG1608P-2550-W-T5**

RES SMD 255 OHM 0.05% 1/10W 0603

Susumu

RFQ



**RCWE102016L5FKEA**

RES SMD 0.0165 OHM 2W 2010 WIDE

Vishay Dale

RFQ

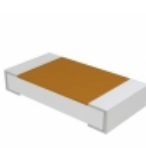


**RG2012P-2370-W-T5**

RES SMD 237 OHM 0.05% 1/8W 0805

Susumu

RFQ

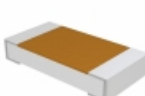


**TNPW1206105RBETA**

RES SMD 105 OHM 0.1% 1/4W 1206

Vishay Dale

RFQ



**TNPW1206130RBETA**

RES SMD 130 OHM 0.1% 1/4W 1206

Vishay Dale

RFQ

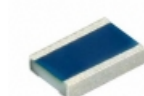


**RNCF2512BTE1K87**

RES SMD 1.87K OHM 0.1% 3/4W 2512

Stackpole Electronics Inc.

RFQ



**MCW0406MD1782BP100**

RES SMD 17.8K OHM 1/4W 0604 WIDE

Vishay Beyschlag

RFQ



**RNCF1210DKE43R2**

RES SMD 43.2 OHM 0.5% 1/3W 1210

Stackpole Electronics Inc.

RFQ



**CSR1225JK24L0**

RES SMD 0.024 OHM 3W 2512 WIDE

Stackpole Electronics Inc.

RFQ

