

**MAX824LEUK+T**



**Maxim Integrated**  
IC SUPERVISOR MPU SOT23-5  
Lead free / RoHS Compliant  
Integrated Circuits (ICs)

- [1.MAX824LEUK+T.pdf](#)
- [2.MAX824LEUK+T.pdf](#)

**Buy Now**

**Out Stock**  
**0 pcs**  
Minimum:1  
Multiples:100  
Manufacturer lead time 10 weeks

We can supply MAX824LEUK+T, use the request quote form to request MAX824LEUK+T price and lead time. Zeano is a professional electronic components distributor. With 3+ Million line items of available electronic components can ship in short lead-time, over 250 thousand part numbers of electronic components in stock for immediately delivery, which may include part number MAX824LEUK+T. The price and lead time for MAX824LEUK+T depending on the quantity required and warehouse location. Contact us and our sales representative will provide you price. We look forward to work with you.

Shopping Process

**1**

Confirm the product

**2**

submit the order

**3**

payment

**4**

wait for delivery

**5**

receive the goods

Specifications

<b>Voltage - Threshold:</b>	4.63V
<b>Type:</b>	Simple Reset/Power-On Reset
<b>Supplier Device Package:</b>	SOT-23-5
<b>Series:</b>	-
<b>Reset Timeout:</b>	140 ms Minimum
<b>Reset:</b>	Active High/Active Low
<b>Packaging:</b>	Tape & Reel (TR)
<b>Package / Case:</b>	SC-74A, SOT-753
<b>Output:</b>	Push-Pull, Totem Pole
<b>Operating Temperature:</b>	-40°C ~ 125°C (TA)
<b>Number of Voltages Monitored:</b>	1
<b>Mounting Type:</b>	Surface Mount

Related products



**MAX823\_EUK**  
in stock  
[MAXIM](#)

RFQ



**MAX824LEUK-T**  
[MAXIM](#)

RFQ



**MAX823YEEXK+T**  
IC SUPERVISOR MPU SC70-5  
[Maxim Integrated](#)

RFQ



**MAX824MEUK+T**  
IC SUPERVISOR MPU SOT23-5  
[Maxim Integrated](#)

RFQ



**MAX824LEXK+T**  
IC SUPERVISOR MPU SC70-5  
[Maxim Integrated](#)

RFQ



**MAX824**  
in stock  
[MAXIM](#)

RFQ



**MAX824MEUK**  
in stock  
[MAXIM](#)

RFQ



**MAX823ZEEXK+T**  
IC MPU SUPERVISORY CIRC SC70-5  
[Maxim Integrated](#)

RFQ



**MAX824LEUK**  
in stock  
[MAXIM](#)

RFQ



**MAX824MEUK-T**  
in stock  
[MAXIM](#)

RFQ

Guess You May Looking For



**RG1005P-2610-W-T1**  
RES SMD 261 OHM 0.05% 1/16W 0402  
[Susumu](#)

RFQ



**RG1608N-1021-B-T1**  
RES SMD 1.02KOHM 0.1% 1/10W 0603  
[Susumu](#)

RFQ



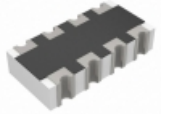
**RG2012P-6811-P-T1**  
RES SMD 6.81KOHM 0.02% 1/8W 0805  
[Susumu](#)

RFQ



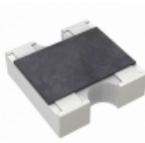
**RG3216V-2322-B-T1**  
RES SMD 23.2K OHM 0.1% 1/4W 1206  
[Susumu](#)

RFQ



**TC124-FR-0730R1L**  
RES ARRAY 4 RES 30.1 OHM 0804  
[Yageo](#)

RFQ



**YC162-FR-07475KL**  
RES ARRAY 2 RES 475K OHM 0606  
[Yageo](#)

RFQ



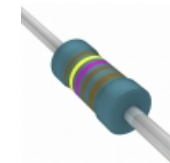
**NOMCT16032001DT1**  
RES ARRAY 8 RES 2K OHM 16SOIC  
[Vishay Thin Film](#)

RFQ



**ORNV50022502T0**  
RES NETWORK 5 RES MULT OHM 8SOIC  
[Vishay Thin Film](#)

RFQ



**MRS25000C1471FCT00**  
RES 1.47K OHM 0.6W 1% AXIAL  
[Vishay BC Components](#)

RFQ



**CMF6046R400FKR6**  
RES 46.4 OHM 1W 1% AXIAL  
[Vishay Dale](#)

RFQ