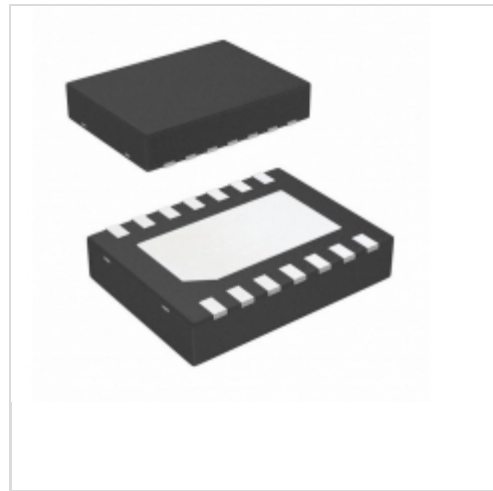


LM27952SDX/NOPB



N/A
 IC LED DRIVER RGLTR DIM 14WSON
 Lead free / RoHS Compliant
 Integrated Circuits (ICs)

[Buy Now](#)

Out Stock

0 pcs

Minimum:1

Multiples:1

Manufacturer lead time 10 weeks

Images are for reference only.

See Product Specifications for product details.

If you are interested to buy LM27952SDX/NOPB,Just Email us.

Sales@zeanoit.com

our sales team will reply you within 24 hours

Shopping Process

1

Confirm the product

2

submit the order

3

payment

4

wait for delivery

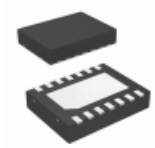
5

receive the goods

Specifications

Voltage - Supply (Min):	3V
Voltage - Supply (Max):	5.5V
Voltage - Output:	2.5 V ~ 3.9 V
Type:	DC DC Regulator
Topology:	Switched Capacitor (Charge Pump)
Supplier Device Package:	14-WSON (4x3)
Series:	-
Packaging:	Tape & Reel (TR)
Package / Case:	14-WDFDN Exposed Pad
Operating Temperature:	-40°C ~ 85°C (TA)
Number of Outputs:	4
Mounting Type:	Surface Mount
Internal Switch(s):	Yes
Frequency:	750kHz
Dimming:	PWM
Current - Output / Channel:	30mA
Applications:	Backlight

Related products



LM27952SDX
 IC LED DRIVER RGLTR DIM 14WSON
[N/A](#)

[RFQ](#)



LM2795BL
[NS](#)

[RFQ](#)



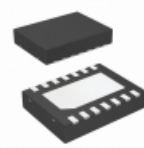
LM27953TL/NOPB
 IC LED DRIVER RGLTR DIM 18TUSMD
[N/A](#)

[RFQ](#)



LM27953TLX
[NS](#)

[RFQ](#)



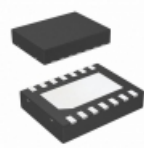
LM27952SD
 IC LED DRIVER RGLTR DIM 14WSON
[N/A](#)

[RFQ](#)



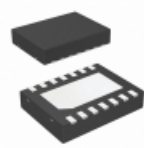
LM2795BL/NOPB
 IC LED DRIVER RGLTR DIM 14DSBGA
[N/A](#)

[RFQ](#)



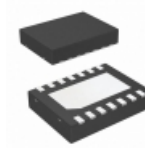
LM27952SD/NOPB
 IC LED DRIVER RGLTR DIM 14WSON
[N/A](#)

[RFQ](#)



LM27951SDX/NOPB
 IC LED DRIVER RGLTR DIM 14WSON
[N/A](#)

[RFQ](#)



LM27951SDX
 IC LED DRIVER RGLTR DIM 14WSON
[N/A](#)

[RFQ](#)



LM27953TLX/NOPB
 IC LED DRIVER RGLTR DIM 18TUSMD
[N/A](#)

[RFQ](#)

Guess You May Looking For



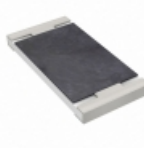
RT0805WRC0722K6L
 RES SMD 22.6KOHM 0.05% 1/8W 0805
[Yageo](#)

[RFQ](#)



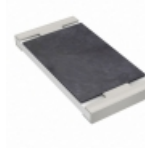
RG2012N-4531-W-T5
 RES SMD 4.53KOHM 0.05% 1/8W 0805
[Susumu](#)

[RFQ](#)



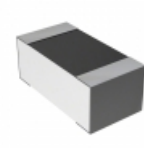
RT2512BKE07649KL
 RES SMD 649K OHM 0.1% 3/4W 2512
[Yageo](#)

[RFQ](#)



RT2512CKB0730RL
 RES SMD 30 OHM 0.25% 3/4W 2512
[Yageo](#)

[RFQ](#)



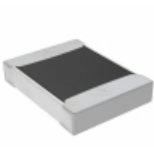
RN73C1J1K18BTDF
 RES SMD 1.18KOHM 0.1% 1/16W 0603
[TE Connectivity Passive Product](#)

[RFQ](#)



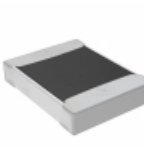
HRG3216P-3320-B-T1
 RES SMD 332 OHM 0.1% 1W 1206
[Susumu](#)

[RFQ](#)



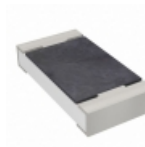
TNPW12104K70BEEA
 RES SMD 4.7K OHM 0.1% 1/3W 1210
[Vishay Dale](#)

[RFQ](#)



TNPW121023K7BETA
 RES SMD 23.7K OHM 0.1% 1/3W 1210
[Vishay Dale](#)

[RFQ](#)



RT1206WRD07357RL
 RES SMD 357 OHM 0.05% 1/4W 1206
[Yageo](#)

[RFQ](#)



PHP00603E1212BBT1
 RES SMD 12.1K OHM 0.1% 3/8W 0603
[Vishay Thin Film](#)

[RFQ](#)

