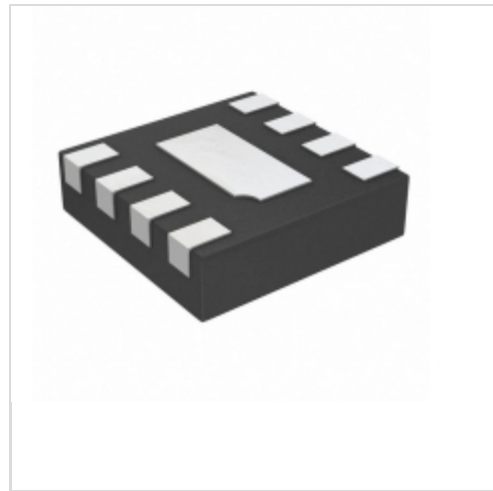


## SC4509WLTRT



[Semtech](#)

IC LED DRVR RGLTR DIM 30MA 8MLPD

Lead free / RoHS Compliant

Integrated Circuits (ICs)

[SC4509WLTRT.pdf](#)

**Buy Now**

**Out Stock**

**0 pcs**

Minimum:1

Multiples:100

Manufacturer lead time 10 weeks

We can supply Semtech SC4509WLTRT, use the request quote form to request SC4509WLTRT price, Semtech Datasheet PDF and lead time. Zeanoit.com is a professional electronic components distributor. With 3+ Million line items of available electronic components can ship in short lead-time, over 250 thousand part numbers of electronic components in stock for immediately delivery, which may include part number SC4509WLTRT. The price and lead time for SC4509WLTRT depending on the quantity required, availability and warehouse location.

### Shopping Process

**1**

**Confirm the product**

**2**

**submit the order**

**3**

**payment**

**4**

**wait for delivery**

**5**

**receive the goods**

### Specifications

<b>Voltage - Supply (Min):</b>	2.7V
<b>Voltage - Supply (Max):</b>	10V
<b>Voltage - Output:</b>	20V
<b>Type:</b>	DC DC Regulator
<b>Topology:</b>	Step-Up (Boost)
<b>Supplier Device Package:</b>	8-MLPD-W (2x2)
<b>Series:</b>	-
<b>Packaging:</b>	Tape & Reel (TR)
<b>Package / Case:</b>	8-WDFDN Exposed Pad
<b>Operating Temperature:</b>	-40°C ~ 85°C (TA)
<b>Number of Outputs:</b>	1
<b>Mounting Type:</b>	Surface Mount
<b>Internal Switch(s):</b>	Yes
<b>Frequency:</b>	1.2MHz
<b>Dimming:</b>	PWM
<b>Current - Output / Channel:</b>	30mA
<b>Applications:</b>	Backlight

### Related products



**SC4510ITS**  
[SEMTECH](#)

[RFQ](#)



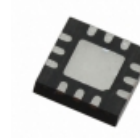
**SC4508IMLTR**  
[SEMTECH](#)

[RFQ](#)



**SC450ITS**  
[SC](#)

[RFQ](#)



**SC4508IMLTRT**  
IC REG CTRLR BUCK/BUCK-BST 12MLF  
[Semtech Corporation](#)

[RFQ](#)



**SC451**

[RFQ](#)



**SC4509SKTRT**  
IC LED DRIVER RGLTR DIM SOT23-6  
[Semtech Corporation](#)

[RFQ](#)



**SC4505MLTRT**  
IC REG BOOST ADJ 0.7A 16MLPQ  
[Semtech Corporation](#)

[RFQ](#)



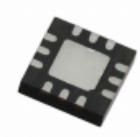
**SC450ITSTRT**  
IC REG CTRLR BUCK 38TSSOP  
[Semtech Corporation](#)

[RFQ](#)



**SC451-K-1**

[RFQ](#)



**SC4508AMLTRT**  
IC REG CTRLR BUCK/BCK-BST 12MLPQ  
[Semtech Corporation](#)

[RFQ](#)

### Guess You May Looking For



**RT0805WRC0748K7L**  
RES SMD 48.7KOHM 0.05% 1/8W 0805  
[Yageo](#)

[RFQ](#)



**HRG3216P-7321-D-T1**  
RES SMD 7.32K OHM 0.5% 1W 1206  
[Susumu](#)

[RFQ](#)



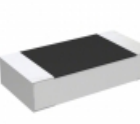
**PAT0603E7320BST1**  
RES SMD 732 OHM 0.1% 0.15W 0603  
[Vishay Thin Film](#)

[RFQ](#)



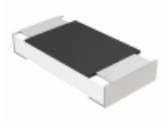
**RG2012N-2432-W-T1**  
RES SMD 24.3KOHM 0.05% 1/8W 0805  
[Susumu](#)

[RFQ](#)



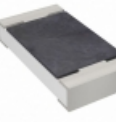
**RP73D2B316KBTDF**  
RES SMD 316K OHM 0.1% 1/4W 1206  
[TE Connectivity Passive Product](#)

[RFQ](#)



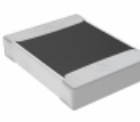
**MCA1206MD5111BP100**  
RES SMD 5.11K OHM 0.1% 0.4W 1206  
[Vishay Beyschlag](#)

[RFQ](#)



**RT1206WRB07154RL**  
RES SMD 154 OHM 0.05% 1/4W 1206  
[Yageo](#)

[RFQ](#)



**TNPW12107K50BEEA**  
RES SMD 7.5K OHM 0.1% 1/3W 1210  
[Vishay Dale](#)

[RFQ](#)



**RT0805WRB07124RL**  
RES SMD 124 OHM 0.05% 1/8W 0805  
[Yageo](#)

[RFQ](#)



**PTN1206E9200BST1**  
RES SMD 920 OHM 0.1% 0.4W 1206  
[Vishay Thin Film](#)

[RFQ](#)

