

**ZICM3588SP2-2**



**CEL (California Eastern Laboratories)**

MESHCONNECT EM358 MINI MODULE, +  
Lead free / RoHS Compliant  
RF/IF and RFID

[ZICM3588SP2-2.pdf](#)

**Buy Now**

part#ZICM3588SP2-2 is available, see description of ZICM3588SP2-2 as below .  
use the request quote form to request ZICM3588SP2-2 price and lead time.  
Buy Electronic Components at zeanoit.com .we are an independent distributor of  
electronic components with extensive inventory in stock.  
The price and lead time for ZICM3588SP2-2 depending on the quantity required,  
availability and warehouse location.Contact us today and our sales team will send you  
quotation soon.  
Email: sales@zeanoit.com

Shopping Process



**1**  
Confirm the product



**2**  
submit the order



**3**  
payment



**4**  
wait for delivery



**5**  
receive the goods

Specifications

<b>Voltage - Supply:</b>	3.3V
<b>Series:</b>	MeshConnect™
<b>Serial Interfaces:</b>	SPI, UART
<b>Sensitivity:</b>	-103dBm
<b>RF Family/Standard:</b>	802.15.4
<b>Protocol:</b>	Zigbee®
<b>Power - Output:</b>	20dBm
<b>Operating Temperature:</b>	-40°C ~ 85°C
<b>Mounting Type:</b>	Surface Mount
<b>Modulation:</b>	-
<b>Memory Size:</b>	512kB Flash, 64kB SRAM
<b>Frequency:</b>	2.4GHz
<b>Data Rate:</b>	250kbps
<b>Current - Transmitting:</b>	150mA
<b>Current - Receiving:</b>	34mA
<b>Antenna Type:</b>	Not Included, Castellation

Related products



**ZICM3588SP2-2C-R**  
MESHCONNECT EM358 MINI MODULE,  
+  
[CEL](#)

RFQ



**ZICM3588SP2-2-SL**  
MESHCONNECT EM358 MINI MODULE,  
+  
[CEL](#)

RFQ



**ZICM3588SP2-1C**  
RF TXRX MODULE 802.15.4  
[CEL](#)

RFQ



**ZICM3588SP2-1-MW**  
RF TXRX MOD 802.15.4 TRACE ANT  
[CEL](#)

RFQ



**ZICM3588SP2-1C-MW**  
RF TXRX MODULE 802.15.4  
[CEL](#)

RFQ



**ZICM3588SP2-1-R**  
RF TXRX MOD 802.15.4 TRACE ANT  
[CEL](#)

RFQ



**ZICM3588SP2-2-R**  
MESHCONNECT EM358 MINI MODULE,  
+  
[CEL](#)

RFQ



**ZICM3588SP2-2C-SL**  
MESHCONNECT EM358 MINI MODULE,  
+  
[CEL](#)

RFQ



**ZICM3588SP2-2C**  
MESHCONNECT EM358 MINI MODULE,  
+  
[CEL](#)

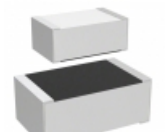
RFQ



**ZICM3588SP2-1C-R**  
RF TXRX MODULE 802.15.4  
[CEL](#)

RFQ

Guess You May Looking For



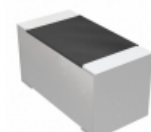
**M55342K06B732APWS**  
RES SMD 732 OHM 0.1% 0.15W 0705  
[Vishay Dale](#)

RFQ



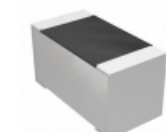
**M55342K12B50A5RWS**  
RES SMD 50.5 OHM 0.1% 1/10W 0603  
[Vishay Dale](#)

RFQ



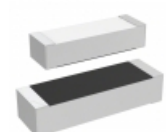
**M55342K12B78B7RWS**  
RES SMD 78.7KOHM 0.1% 1/10W 0603  
[Vishay Dale](#)

RFQ



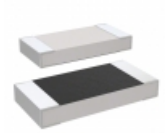
**M55342K12B39B2RWS**  
RES SMD 39.2KOHM 0.1% 1/10W 0603  
[Vishay Dale](#)

RFQ



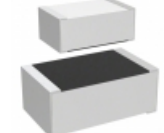
**M55342E04B34B0RTO**  
RES SMD 34K OHM 0.1% 0.15W 1505  
[Vishay Dale](#)

RFQ



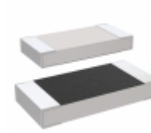
**M55342H03B7E50RWS**  
RES SMD 7.5K OHM 1% 1/5W 1005  
[Vishay Dale](#)

RFQ



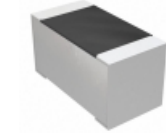
**M55342H06B80D6RWS**  
RES SMD 80.6 OHM 1% 0.15W 0705  
[Vishay Dale](#)

RFQ



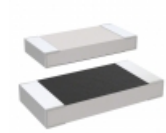
**M55342H03B13B3RWS**  
RES SMD 13.3K OHM 0.1% 1/5W 1005  
[Vishay Dale](#)

RFQ



**M55342H12B470JRWS**  
RES SMD 470 OHM 5% 1/10W 0603  
[Vishay Dale](#)

RFQ



**M55342K03B845APWS**  
RES SMD 845 OHM 0.1% 1/5W 1005  
[Vishay Dale](#)

RFQ