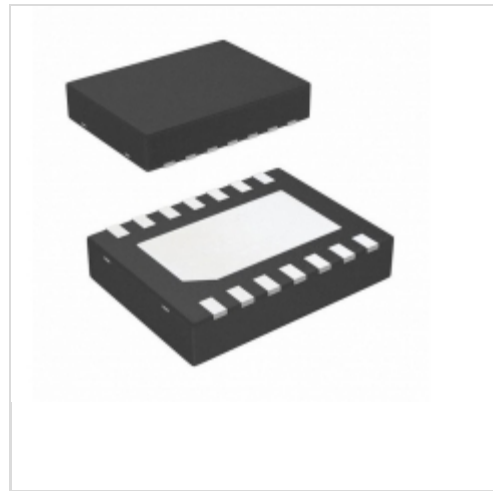


## LM3570SD/NOPB



N/A  
 IC LED DRIVER RGLTR DIM 14WSON  
 Lead free / RoHS Compliant  
 Integrated Circuits (ICs)

**Buy Now**

Images are for reference only.  
 See Product Specifications for product details.  
 If you are interested to buy LM3570SD/NOPB, Just Email us.  
 Sales@zeanoit.com  
 our sales team will reply you within 24 hours

### Shopping Process

**1**

Confirm the product

**2**

submit the order

**3**

payment

**4**

wait for delivery

**5**

receive the goods

### Specifications

<b>Voltage - Supply (Min):</b>	2.7V
<b>Voltage - Supply (Max):</b>	5.5V
<b>Voltage - Output:</b>	4.3V
<b>Type:</b>	DC DC Regulator
<b>Topology:</b>	Switched Capacitor (Charge Pump)
<b>Supplier Device Package:</b>	14-WSON (4x3)
<b>Series:</b>	-
<b>Packaging:</b>	Tape & Reel (TR)
<b>Package / Case:</b>	14-WDFN Exposed Pad
<b>Operating Temperature:</b>	-40°C ~ 85°C (TA)
<b>Number of Outputs:</b>	3
<b>Mounting Type:</b>	Surface Mount
<b>Internal Switch(s):</b>	Yes
<b>Frequency:</b>	500kHz
<b>Dimming:</b>	PWM
<b>Current - Output / Channel:</b>	20mA
<b>Applications:</b>	Backlight

### Related products



**LM3565TLX/NOPB**  
 IC LED DRIVER RGLTR DIM 16DSBGA  
 N/A

RFQ



**LM3578AM**  
 IC REG MULT CONFIG INV 8SOIC  
 N/A

RFQ



**LM3570SD**  
 NS

RFQ



**LM3565EVM**  
 EVAL MODULE FOR LM3565  
 N/A

RFQ



**LM3578AMX/NOPB**  
 IC REG MULT CONFIG INV 8SOIC  
 N/A

RFQ



**LM356N**  
 NS

RFQ



**LM3578AMX**  
 IC REG MULT CONFIG INV 8SOIC  
 N/A

RFQ



**LM3578AM/NOPB**  
 IC REG MULT CONFIG INV 8SOIC  
 N/A

RFQ



**LM3565TLE/NOPB**  
 IC LED DRIVER RGLTR DIM 16DSBGA  
 N/A

RFQ



**LM3578AMY**  
 NS

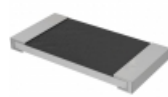
RFQ

### Guess You May Looking For



**PAT0805E89R8BST1**  
 RES SMD 89.8 OHM 0.1% 1/5W 0805  
 Vishay Thin Film

RFQ



**RHC2512FT2R74**  
 RES SMD 2.74 OHM 1% 2W 2512  
 Stackpole Electronics Inc.

RFQ



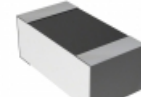
**HRG3216P-49R9-B-T5**  
 RES SMD 49.9 OHM 0.1% 1W 1206  
 Susumu

RFQ



**RT2512CKB0753R6L**  
 RES SMD 53.6 OHM 0.25% 3/4W 2512  
 Yageo

RFQ



**RN73C1J9R76BTDF**  
 RES SMD 9.76 OHM 0.1% 1/16W 0603  
 TE Connectivity Passive Product

RFQ



**RG1005N-682-W-T1**  
 RES SMD 6.8KOHM 0.05% 1/16W 0402  
 Susumu

RFQ



**RG3216N-56R0-W-T1**  
 RES SMD 56 OHM 0.05% 1/4W 1206  
 Susumu

RFQ



**RG3216N-6650-W-T1**  
 RES SMD 665 OHM 0.05% 1/4W 1206  
 Susumu

RFQ



**RT1210WRB07274RL**  
 RES SMD 274 OHM 0.05% 1/4W 1210  
 Yageo

RFQ



**RG1608V-101-D-T5**  
 RES SMD 100 OHM 0.5% 1/10W 0603  
 Susumu

RFQ