

**OZRF0011FF2B**



[Bel Fuse, Inc.](#)

PTC RESETTABLE 60V 0.11A RADIAL

Lead free / RoHS Compliant

Circuit Protection

[OZRF0011FF2B.pdf](#)

**Buy Now**

We can supply Bel Fuse, Inc. OZRF0011FF2B, use the request quote form to request OZRF0011FF2B price, Bel Fuse, Inc. Datasheet PDF and lead time. Zeanoit.com is a professional electronic components distributor. With 3+ Million line items of available electronic components can ship in short lead-time, over 250 thousand part numbers of electronic components in stock for immediately delivery, which may include part number OZRF0011FF2B. The price and lead time for OZRF0011FF2B depending on the quantity required, availability and warehouse location.

**Out Stock**

**0 pcs**

Minimum:1

Multiples:100

Manufacturer lead time 10 weeks

Shopping Process



**Confirm the product**



**submit the order**



**payment**



**wait for delivery**



**receive the goods**

Specifications

<b>Voltage - Max:</b>	60V
<b>Type:</b>	Polymeric
<b>Time to Trip:</b>	2s
<b>Thickness (Max):</b>	-
<b>Size / Dimension:</b>	0.268" L x 0.181" W (6.80mm x 4.60mm)
<b>Series:</b>	OZRF
<b>Resistance - Post Trip (R1) (Max):</b>	16 Ohm
<b>Resistance - Initial (Ri) (Min):</b>	5 Ohm
<b>Resistance - 25°C (Typ):</b>	-
<b>Ratings:</b>	-
<b>Packaging:</b>	Tape & Reel (TR)
<b>Package / Case:</b>	Radial, Disc
<b>Operating Temperature:</b>	-40°C ~ 85°C
<b>Mounting Type:</b>	Through Hole
<b>Lead Spacing:</b>	0.197" (5.00mm)
<b>Height - Seated (Max):</b>	0.390" (9.90mm)
<b>Current - Trip (It):</b>	400mA
<b>Current - Max:</b>	3A
<b>Current - Hold (Ih) (Max):</b>	110mA
<b>Approvals:</b>	cURus, TUV

Related products



**OZRF0008FF2B**

PTC RESETTABLE 60V 0.08A RADIAL  
[Bel Fuse Inc.](#)

RFQ



**OZRF0011FF1E**

PTC RESETTABLE 60V 0.11A RADIAL  
[Bel Fuse Inc.](#)

RFQ



**OZRF0015FF2B**

PTC RESETTABLE 60V 0.15A RADIAL  
[Bel Fuse Inc.](#)

RFQ



**OZRE0200FF1A**

PTC RESTTBLE 240V 2.0A RADIAL  
[Bel Fuse Inc.](#)

RFQ



**OZRF0012FF1E**

PTC RESETTABLE 60V 0.12A RADIAL  
[Bel Fuse Inc.](#)

RFQ



**OZRF0015FF1E**

PTC RESETTABLE 60V 0.15A RADIAL  
[Bel Fuse Inc.](#)

RFQ



**OZRE0150FF1A**

PTC RESTTBLE 240V 1.5A RADIAL  
[Bel Fuse Inc.](#)

RFQ



**OZRF0018FF1A**

PTC RESETTABLE 60V 0.18A RADIAL  
[Bel Fuse Inc.](#)

RFQ



**OZRF0012FF2B**

PTC RESETTABLE 60V 0.12A RADIAL  
[Bel Fuse Inc.](#)

RFQ



**OZRF0008FF1E**

PTC RESETTABLE 60V 0.08A RADIAL  
[Bel Fuse Inc.](#)

RFQ

Guess You May Looking For



**5KP43A-TP**

TVS DIODE 43VWM 69.4VC R6  
[Micro Commercial Co](#)

RFQ



**1.5KE43A-E3/54**

TVS DIODE 36.8VWM 59.3VC 1.5KE  
[Vishay Semiconductor Diodes Division](#)

RFQ



**SMF15A-HM3-18**

TVS DIODE 15VWM 24.4VC DO-219AB  
[Vishay Semiconductor Diodes Division](#)

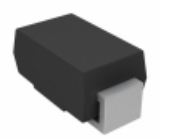
RFQ



**5KP100CA-TP**

TVS DIODE 100VWM 162VC R6  
[Micro Commercial Co](#)

RFQ



**P2SMA130A-M3/5AT**

TVS DIODE 111VWM 179VC DO-214AC  
[Vishay Semiconductor Diodes Division](#)

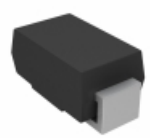
RFQ



**TPSMC15A**

TVS DIODE 12.8VWM DO-214AB  
[Littelfuse Inc.](#)

RFQ



**P4SMA18CA-M3/5A**

TVS DIODE 15.3VWM 25.2VC DO-214A  
[Vishay Semiconductor Diodes Division](#)

RFQ



**SMBJ54C**

TVS DIODE 54VWM 91.46VC SMT  
[Littelfuse Inc.](#)

RFQ



**TGL41-100A-E3/96**

TVS DIODE 85.5VWM 137VC MELF  
[Vishay Semiconductor Diodes Division](#)

RFQ



**TA6F22AHM3\_A/I**

TVS DIODE 18.8VWM DO221AC  
[Vishay Semiconductor Diodes Division](#)

RFQ

