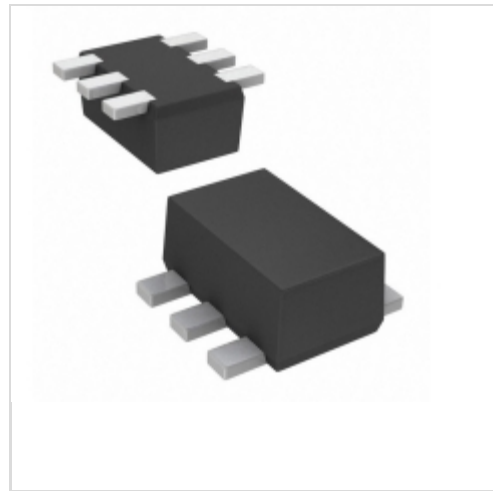


## DME914C10R



**Panasonic**

TRANS NPN PREBIAS/PNP SSMINI6  
Lead free / RoHS Compliant  
Discrete Semiconductor Products

**Buy Now**

part#DME914C10R is available, see description of DME914C10R as below .  
use the request quote form to request DME914C10R price and lead time.  
Buy Electronic Components at zeanoit.com .we are an independent distributor of electronic components with extensive inventory in stock.  
The price and lead time for DME914C10R depending on the quantity required, availability and warehouse location.Contact us today and our sales team will send you quotation soon.  
Email: sales@zeanoit.com

**Out Stock**  
**0 pcs**  
Minimum:1  
Multiples:100  
Manufacturer lead time 10 weeks

PRICE	
8000 pcs	\$0.104
16000 pcs	\$0.095
24000 pcs	\$0.088
56000 pcs	\$0.079

### Shopping Process

**1**

Confirm the product

**2**

submit the order

**3**

payment

**4**

wait for delivery

**5**

receive the goods

### Specifications

<b>Voltage - Collector Emitter Breakdown (Max):</b>	50V, 12V
<b>Vce Saturation (Max) @ Ib, Ic:</b>	250mV @ 500µA, 10mA / 250mV @ 10mA, 200mA
<b>Transistor Type:</b>	1 NPN Pre-Biased, 1 PNP
<b>Supplier Device Package:</b>	SSMini6-F3-B
<b>Series:</b>	-
<b>Resistor - Emitter Base (R2) (Ohms):</b>	47k
<b>Resistor - Base (R1) (Ohms):</b>	4.7k
<b>Power - Max:</b>	125mW
<b>Packaging:</b>	Tape & Reel (TR)
<b>Package / Case:</b>	SOT-563, SOT-666
<b>Mounting Type:</b>	Surface Mount
<b>Frequency - Transition:</b>	300MHz
<b>DC Current Gain (hFE) (Min) @ Ic, Vce:</b>	80 @ 5mA, 10V / 270 @ 10mA, 2V
<b>Current - Collector Cutoff (Max):</b>	500nA
<b>Current - Collector (Ic) (Max):</b>	100mA, 500mA

### Related products



**DME6W1P2K**  
CAP FILM 1.2UF 10% 630VDC RADIAL  
[Cornell Dubilier Electronics \(CDE\)](#)

RFQ



**DME6W1K-F**  
CAP FILM 1UF 10% 630VDC RADIAL  
[Cornell Dubilier Electronics \(CDE\)](#)

RFQ



**DME6W1P8K-F**  
CAP FILM 1.8UF 10% 630VDC RADIAL  
[Cornell Dubilier Electronics \(CDE\)](#)

RFQ



**DME6W1P2K-F**  
CAP FILM 1.2UF 10% 630VDC RADIAL  
[Cornell Dubilier Electronics \(CDE\)](#)

RFQ



**DME6W1P5K-F**  
CAP FILM 1.5UF 10% 630VDC RADIAL  
[Cornell Dubilier Electronics \(CDE\)](#)

RFQ



**DME800**  
TRANS RF BIPO 2500 50A 55ST1  
[Microsemi Corporation](#)

RFQ



**DME6W1P8K**  
CAP FILM 1.8UF 10% 630VDC RADIAL  
[Cornell Dubilier Electronics \(CDE\)](#)

RFQ



**DME6S82K-F**  
CAP FILM 0.082UF 10% 630VDC RAD  
[Cornell Dubilier Electronics \(CDE\)](#)

RFQ



**DME6S82K**  
CAP FILM 0.082UF 10% 630VDC RAD  
[Cornell Dubilier Electronics \(CDE\)](#)

RFQ



**DME6W2P2K-F**  
CAP FILM 2.2UF 10% 630VDC RADIAL  
[Cornell Dubilier Electronics \(CDE\)](#)

RFQ

### Guess You May Looking For



**TS1101-100DB**  
BOARD EVAL OPAMP TS1101-100  
[Touchstone Semiconductor](#)

RFQ



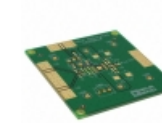
**DC2126A**  
MOD WIRELESS TEMP SENSOR W/BATT  
[Linear Technology](#)

RFQ



**ISL28258SOICEVAL1Z**  
EVALUATION BOARD ISL28258 8SOIC  
[Intersil](#)

RFQ



**AD8000YRD-EBZ**  
BOARD EVAL FOR AD8000YRD  
[Analog Devices Inc.](#)

RFQ



**RTE0T0002LKCE00000R**  
E2 LITE DEBUGGER  
[Renesas Electronics America](#)

RFQ



**Z893231ZEM**  
Z89323 IN-CIRCUIT EMULATOR  
[Zilog](#)

RFQ



**SD4Y-EK-XX**  
BOARD PROGRAM FOR AS5XXX  
[ams](#)

RFQ



**AE-Q144-MAX2**  
ADAPTER DIP-40 TO QFP-144  
[Phyton Inc.](#)

RFQ



**DS87001-Q52**  
ADAPTER MCU 52-PLCC TO 40-DIP  
[Maxim Integrated](#)

RFQ



**LFTQSDT**  
HARDWARE 0.65MM 52-PIN QFP  
[NXP USA Inc.](#)

RFQ