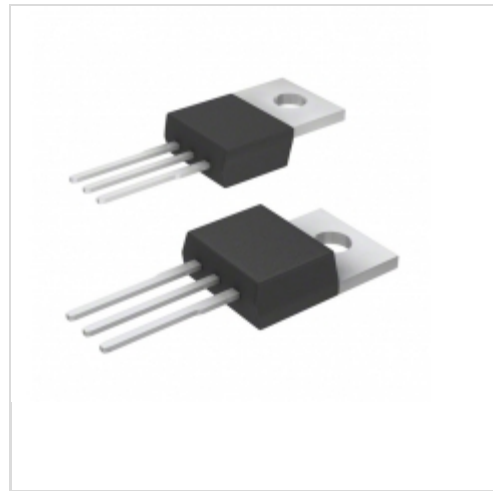


**TOP222Y**



**Power Integrations**

IC OFFLINE SWIT PWM OCP HV TO220  
Contains lead / RoHS non-compliant  
Integrated Circuits (ICs)

[TOP222Y.pdf](#)

**Buy Now**

Images are for reference only.

See Product Specifications for product details.

If you are interested to buy TOP222Y, Just Email us.

Sales@zeanoit.com

our sales team will reply you within 24 hours

**Shopping Process**



**1**  
Confirm the product



**2**  
submit the order



**3**  
payment



**4**  
wait for delivery



**5**  
receive the goods

**Specifications**

<b>Voltage - Supply (Vcc/Vdd):</b>	-
<b>Voltage - Breakdown:</b>	700V
<b>Topology:</b>	Boost, Buck, Flyback, Forward
<b>Supplier Device Package:</b>	TO-220-3
<b>Series:</b>	TOPSwitch®-II
<b>Power (Watts):</b>	25W
<b>Packaging:</b>	Tube
<b>Package / Case:</b>	TO-220-3
<b>Output Isolation:</b>	Isolated
<b>Operating Temperature:</b>	-40°C ~ 150°C (TJ)
<b>Mounting Type:</b>	Through Hole
<b>Internal Switch(s):</b>	Yes
<b>Frequency - Switching:</b>	100kHz
<b>Fault Protection:</b>	Current Limiting, Over Temperature
<b>Duty Cycle:</b>	67%
<b>Control Features:</b>	-

**Related products**



**TOP222GN-TL**  
IC OFFLINE SWIT PWM OCP HV 8SMD  
[Power Integrations](#)

RFQ



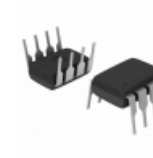
**TOP223GN**  
IC OFFLINE SWIT PWM OCP HV 8SMD  
[Power Integrations](#)

RFQ



**TOP223G-TL**  
IC OFFLINE SWIT PWM OCP HV 8SMD  
[Power Integrations](#)

RFQ



**TOP222P**  
IC OFFLINE SWIT PWM OCP HV 8DIP  
[Power Integrations](#)

RFQ



**TOP223G**  
IC OFFLINE SWIT PWM OCP HV 8SMD  
[Power Integrations](#)

RFQ



**TOP222GN**  
IC OFFLINE SWIT PWM OCP HV 8SMD  
[Power Integrations](#)

RFQ



**TOP222NY**  
[POWER](#)

RFQ



**TOP222PN**  
IC OFFLINE SWIT PWM OCP HV 8DIP  
[Power Integrations](#)

RFQ



**TOP222YN**  
IC OFFLINE SWIT PWM OCP HV TO220  
[Power Integrations](#)

RFQ



**TOP222YN=TOP222YN**  
[POWER](#)

RFQ

**Guess You May Looking For**



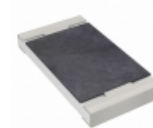
**RNCF0805BTC976R**  
RES SMD 976 OHM 0.1% 1/8W 0805  
[Stackpole Electronics Inc.](#)

RFQ



**RNCF0805BTC143K**  
RES SMD 143K OHM 0.1% 1/8W 0805  
[Stackpole Electronics Inc.](#)

RFQ



**AA2010FK-07220KL**  
RES SMD 220K OHM 1% 3/4W 2010  
[Yageo](#)

RFQ



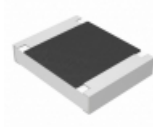
**SMM02070C6190FBS00**  
RES SMD 619 OHM 1% 1W MELF  
[Vishay Beyschlag](#)

RFQ



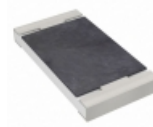
**RT1206CRE07931RL**  
RES SMD 931 OHM 0.25% 1/4W 1206  
[Yageo](#)

RFQ



**ERJ-S14F2742U**  
RES SMD 27.4K OHM 1% 1/2W 1210  
[Panasonic Electronic Components](#)

RFQ



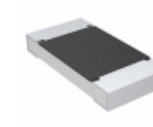
**AF2010JK-072K2L**  
RES SMD 2.2K OHM 5% 3/4W 2010  
[Yageo](#)

RFQ



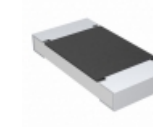
**AT0402CRD071K69L**  
RES SMD 1.69K OHM 1/16W 0402  
[Yageo](#)

RFQ



**CRCW2010110KFKTF**  
RES SMD 110K OHM 1% 3/4W 2010  
[Vishay Dale](#)

RFQ



**CRCW2010196RFKTF**  
RES SMD 196 OHM 1% 3/4W 2010  
[Vishay Dale](#)

RFQ