

MC33039P



[AMI Semiconductor / ON Semiconductor](#)

IC MOTOR CONTROLLER 8DIP
 Contains lead / RoHS non-compliant
 Integrated Circuits (ICs)

[MC33039P.pdf](#)

[Buy Now](#)

1. Please confirm the Detail which include the part no. and the manufacturer of the products when ordering.
2. If you have bill of material (BOM) list require to quote, you could send to our email.
3. You can email us to change the order details before shipment.
4. Orders cannot be canceled after shipping the packages.

Shopping Process

1

Confirm the product

2

submit the order

3

payment

4

wait for delivery

5

receive the goods

Specifications

Voltage - Supply:	5.5 V ~ 9 V
Voltage - Load:	-
Technology:	Bipolar
Supplier Device Package:	8-PDIP
Step Resolution:	-
Series:	-
Packaging:	Tube
Package / Case:	8-DIP (0.300", 7.62mm)
Output Configuration:	Pre-Driver - Half Bridge (3)
Operating Temperature:	-40°C ~ 85°C (TA)
Mounting Type:	Through Hole
Motor Type - Stepper:	-
Motor Type - AC, DC:	Brushless DC (BLDC)
Interface:	Parallel
Function:	Controller - Speed
Current - Output:	-
Applications:	General Purpose

Related products



MC3303D
 IC OPAMP GP 1MHZ 14SO
[STMicroelectronics](#)

RFQ



MC33039D
 IC MOTOR CONTROLLER 8SOIC
[ON Semiconductor](#)

RFQ



MC33039PG
 IC MOTOR CONTROLLER 8DIP
[ON Semiconductor](#)

RFQ



MC33039DG
 IC MOTOR CONTROLLER 8SOIC
[ON Semiconductor](#)

RFQ



MC33039P--DIP8
[ON](#)

RFQ



MC33039DR2G
 IC MOTOR CONTROLLER 8SOIC
[ON Semiconductor](#)

RFQ



MC33039
[ON](#)

RFQ



MC3303D
 IC OPAMP GP 1MHZ 14SOIC
[N/A](#)

RFQ



MC3303DG
 IC OPAMP GP 1MHZ 14SOIC
[ON Semiconductor](#)

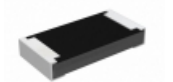
RFQ



MC33039DR2
 IC MOTOR CONTROLLER 8SOIC
[ON Semiconductor](#)

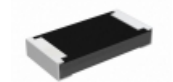
RFQ

Guess You May Looking For



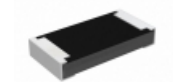
RCP1206B13R0GS3
 RES SMD 13 OHM 2% 11W 1206
[Vishay Dale](#)

RFQ



RCP1206B240RJEB
 RES SMD 240 OHM 5% 11W 1206
[Vishay Dale](#)

RFQ



RCP1206B510RGEB
 RES SMD 510 OHM 2% 11W 1206
[Vishay Dale](#)

RFQ



RG1608V-4120-B-T5
 RES SMD 412 OHM 0.1% 1/10W 0603
[Susumu](#)

RFQ



PWR1913W7R50J
 RES SMD 7.5 OHM 5% 1/2W 1913
[Bourns Inc.](#)

RFQ



RT1206WRC0710K5L
 RES SMD 10.5KOHM 0.05% 1/4W 1206
[Yageo](#)

RFQ



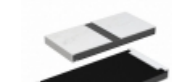
RT1206WRC0791KL
 RES SMD 91K OHM 0.05% 1/4W 1206
[Yageo](#)

RFQ



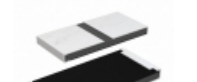
RG1005V-1270-W-T1
 RES SMD 127 OHM 0.05% 1/16W 0402
[Susumu](#)

RFQ



RCP2512W33R0GTP
 RES SMD 33 OHM 2% 22W 2512
[Vishay Dale](#)

RFQ



RCP2512W1K10GEA
 RES SMD 1.1K OHM 2% 22W 2512
[Vishay Dale](#)

RFQ