

BR93C86-WMN6TP


LAPIS Semiconductor
 IC EEPROM 16KBIT 2MHZ 8SO
 Lead free / RoHS Compliant
 Integrated Circuits (ICs)

[BR93C86-WMN6TP.pdf](#)

Buy Now

We can supply LAPIS Semiconductor BR93C86-WMN6TP, use the request quote form to request BR93C86-WMN6TP price, LAPIS Semiconductor Datasheet PDF and lead time. Zeano.com is a professional electronic components distributor. With 3+ Million line items of available electronic components can ship in short lead-time, over 250 thousand part numbers of electronic components in stock for immediately delivery, which may include part number BR93C86-WMN6TP. The price and lead time for BR93C86-WMN6TP depending on the quantity required, availability and warehouse location.

Shopping Process

1

Confirm the product

2

submit the order

3

payment

4

wait for delivery

5

receive the goods

Specifications

Voltage - Supply:	2.5 V ~ 5.5 V
Supplier Device Package:	8-SO
Speed:	2MHz
Series:	-
Packaging:	Tape & Reel (TR)
Package / Case:	8-SOIC (0.154", 3.90mm Width)
Operating Temperature:	-40°C ~ 85°C (TA)
Memory Type:	Non-Volatile
Memory Size:	16Kb (2K x 8)
Memory Format:	EEPROM
Interface:	Microwire, 3-Wire Serial

Related products


BR93G56FVJ-3AGTE2
 IC EEPROM 2KBIT 3MHZ 8TSSOP
[Rohm Semiconductor](#)

RFQ



BR93G46FJ-3AGTE2
[ROHM](#)

RFQ



BR93C86-WDW6TP
 IC EEPROM 16KBIT 2MHZ 8TSSOP
[Rohm Semiconductor](#)

RFQ



BR93CS46F
[ROHM](#)

RFQ



BR93C76-WMN6TP
 IC EEPROM 8KBIT 2MHZ 8SO
[Rohm Semiconductor](#)

RFQ



BR93G56FVJ-3BGTE2
 IC EEPROM 2KBIT 3MHZ 8TSSOP
[Rohm Semiconductor](#)

RFQ



BR93C76-WDW6TP
 IC EEPROM 8KBIT 2MHZ 8TSSOP
[Rohm Semiconductor](#)

RFQ



BR93C76-WDS6TP
 IC EEPROM 8KBIT 2MHZ 8TSSOP
[Rohm Semiconductor](#)

RFQ



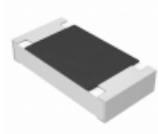
BR93G56FVJ-3GTE2
 IC EEPROM 2KBIT 3MHZ 8TSSOP
[Rohm Semiconductor](#)

RFQ



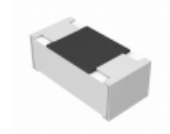
BR93C86-WDS6TP
 IC EEPROM 16KBIT 2MHZ 8TSSOP
[Rohm Semiconductor](#)

RFQ

Guess You May Looking For


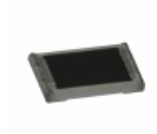
ERJ-8ENF2940V
 RES SMD 294 OHM 1% 1/4W 1206
[Panasonic Electronic Components](#)

RFQ



ERJ-1GEF4420C
 RES SMD 442 OHM 1% 1/20W 0201
[Panasonic Electronic Components](#)

RFQ



ERA-3AEB5361V
 RES SMD 5.36KOHM 0.1% 1/10W 0603
[Panasonic Electronic Components](#)

RFQ



RC0402FR-073M57L
 RES SMD 3.57M OHM 1% 1/16W 0402
[Yageo](#)

RFQ



RMCP1206FT1R10
 RES SMD 1.1 OHM 1% 1/3W 1206
[Stackpole Electronics Inc.](#)

RFQ



ERJ-B2CFR068V
 RES SMD 0.068 OHM 1W 1206 WIDE
[Panasonic Electronic Components](#)

RFQ



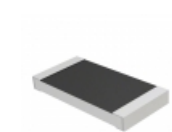
RMCS0805FT7K87
 RES SMD 7.87K OHM 1% 1/8W 0805
[Stackpole Electronics Inc.](#)

RFQ



RNCF0402DTC140K
 RES SMD 140K OHM 0.5% 1/16W 0402
[Stackpole Electronics Inc.](#)

RFQ



RMCP2010JT360R
 RES SMD 360 OHM 5% 1W 2010
[Stackpole Electronics Inc.](#)

RFQ



RT1206DRE07953RL
 RES SMD 953 OHM 0.5% 1/4W 1206
[Yageo](#)

RFQ