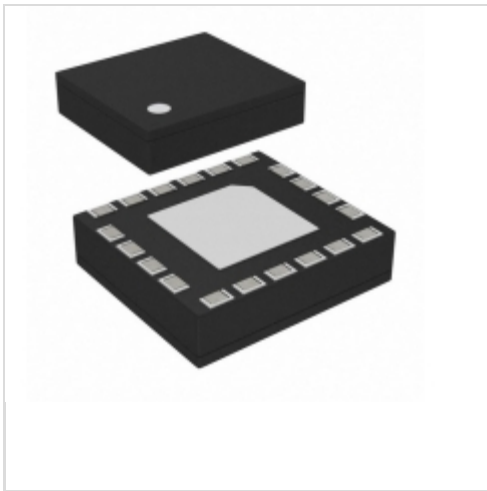


SKY66110-11



[Skyworks Solutions, Inc.](#)

BLE FEM COMMON T&R PA/RX BYPASS

Lead free / RoHS Compliant

RF/IF and RFID

[SKY66110-11.pdf](#)

Buy Now

Out Stock

0 pcs

Minimum:1

Multiples:100

Manufacturer lead time 10 weeks

PRICE

4500 pcs

\$0.801

9000 pcs

\$0.771

Images are for reference only.

See Product Specifications for product details.

If you are interested to buy SKY66110-11,Just Email us.

Sales@zeanoit.com

our sales team will reply you within 24 hours

Shopping Process

1

Confirm the product

2

submit the order

3

payment

4

wait for delivery

5

receive the goods

Specifications

Supplier Device Package: 20-MCM (3x3.3)

Series: -

RF Type: Bluetooth

Packaging: Tape & Reel (TR)

Package / Case: 20-PowerVFQFN

Frequency: 2.4GHz

Features: -

Related products

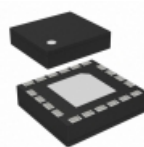


SKY66115-11

472-510 MHZ SMART METERING FEM

[Skyworks Solutions Inc.](#)

RFQ



SKY66111-11

IC FEM BLE 2.4GHZ 20MCM

[Skyworks Solutions Inc.](#)

RFQ



SKY66117-11

SKY

RFQ



SKY66112-11

CONNECTED

HOME/WEARABLEBLE+ZIGBE

[Skyworks Solutions Inc.](#)

RFQ

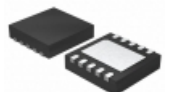


SKY66112-11EK1

EVAL BOARD FOR SKY66112-11

[Skyworks Solutions Inc.](#)

RFQ



SKY66005-11

IC AMP 869-897MHZ 19DBM 10MCM

[Skyworks Solutions Inc.](#)

RFQ

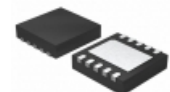


SKY66109-11

20 DBM 802.15.4 FEM WITH PA, LNA

[Skyworks Solutions Inc.](#)

RFQ



SKY66002-11

IC AMP 1930-1990MHZ BAND 2 10MCM

[Skyworks Solutions Inc.](#)

RFQ



SKY66100-11

169-170MHZ 4X4 FEM

[Skyworks Solutions Inc.](#)

RFQ



SKY66008-11

IC AMP 900-990MHZ 19DBM 10MCM

[Skyworks Solutions Inc.](#)

RFQ

Guess You May Looking For



PHP00603E2292BST1

RES SMD 22.9K OHM 0.1% 3/8W 0603

[Vishay Thin Film](#)

RFQ

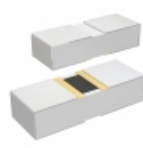


PHP00603E1721BBT1

RES SMD 1.72K OHM 0.1% 3/8W 0603

[Vishay Thin Film](#)

RFQ

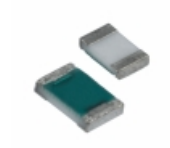


PHP00603E2841BST1

RES SMD 2.84K OHM 0.1% 3/8W 0603

[Vishay Thin Film](#)

RFQ

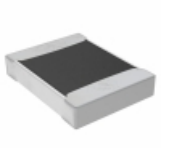


RL3264L-R008-F

RES SMD 0.008 OHM 1% 1W 2512

[Susumu](#)

RFQ



TNPW1210226KBEEN

RES SMD 226K OHM 0.1% 1/3W 1210

[Vishay Dale](#)

RFQ

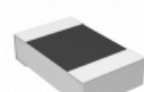


RP73D2A12R7BTG

RES SMD 12.7 OHM 0.1% 1/8W 0805

[TE Connectivity Passive Product](#)

RFQ

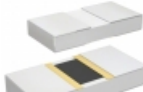


RP73D2A11RBTG

RES SMD 11 OHM 0.1% 1/8W 0805

[TE Connectivity Passive Product](#)

RFQ

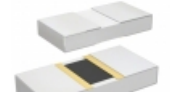


PHP00805E6730BST1

RES SMD 673 OHM 0.1% 5/8W 0805

[Vishay Thin Film](#)

RFQ



PHP00805E6573BBT1

RES SMD 657K OHM 0.1% 5/8W 0805

[Vishay Thin Film](#)

RFQ



RG1005V-2210-D-T10

RES SMD 221 OHM 0.5% 1/16W 0402

[Susumu](#)

RFQ