

AH293-WL-7



Diodes Incorporated

IC MOTOR DRIVER ON/OFF SC59-3

Lead free / RoHS Compliant

Integrated Circuits (ICs)

[AH293-WL-7.pdf](#)

Buy Now

part#AH293-WL-7 is available, see description of AH293-WL-7 as below .
use the request quote form to request AH293-WL-7 price and lead time.
Buy Electronic Components at zeanoit.com .we are an independent distributor of electronic components with extensive inventory in stock.
The price and lead time for AH293-WL-7 depending on the quantity required, availability and warehouse location.Contact us today and our sales team will send you quotation soon.
Email: sales@zeanoit.com

Shopping Process

1

Confirm the product

2

submit the order

3

payment

4

wait for delivery

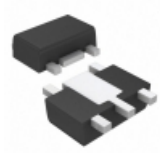
5

receive the goods

Specifications

Voltage - Supply:	1.8 V ~ 5.75 V
Voltage - Load:	1.8 V ~ 5.75 V
Technology:	Power MOSFET
Supplier Device Package:	SC-59-3
Step Resolution:	-
Series:	-
Packaging:	Tape & Reel (TR)
Package / Case:	TO-236-3, SC-59, SOT-23-3
Output Configuration:	Low Side (2)
Operating Temperature:	-20°C ~ 150°C (TJ)
Mounting Type:	Surface Mount
Motor Type - Stepper:	-
Motor Type - AC, DC:	Brushless DC (BLDC)
Interface:	On/Off
Function:	Driver - Fully Integrated, Control and Power Stage
Current - Output:	400mA
Applications:	Fan Motor Driver

Related products



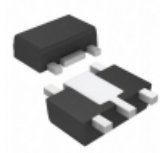
AH292-YG-13
IC MOTOR DRIVER ON/OFF SOT89-5L
[Diodes Incorporated](#)

RFQ



AH293-PL
[ANACHIPDI](#)

RFQ



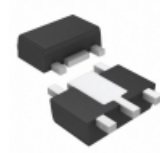
AH293-YG-13
IC MOTOR DRIVER ON/OFF SOT89-5L
[Diodes Incorporated](#)

RFQ



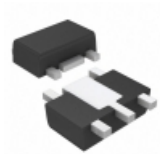
AH292YLA
[Anachip](#)

RFQ



AH293-PL-B
IC MOTOR DRIVER ON/OFF SOT89-5
[Diodes Incorporated](#)

RFQ



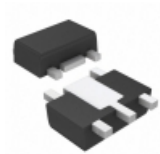
AH293-YL-13
IC MOTOR DRIVER ON/OFF SOT89-5
[Diodes Incorporated](#)

RFQ



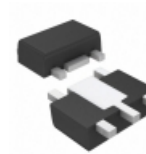
AH2985-P-B
IC MOTOR DRIVER ON/OFF
[Diodes Incorporated](#)

RFQ



AH2984-YG-13
IC MOTOR DRIVER ON/OFF SOT89-5
[Diodes Incorporated](#)

RFQ



AH292-YL-13
IC MOTOR DRIVER ON/OFF SOT89-5
[Diodes Incorporated](#)

RFQ



AH2984-PG-B
IC MOTOR DRIVER ON/OFF 4SIP
[Diodes Incorporated](#)

RFQ

Guess You May Looking For



RCP0603W360RGTP
RES SMD 360 OHM 2% 3.9W 0603
[Vishay Dale](#)

RFQ



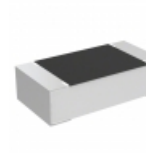
RG2012V-112-W-T5
RES SMD 1.1K OHM 0.05% 1/8W 0805
[Susumu](#)

RFQ



RCP0603W360RGEB
RES SMD 360 OHM 2% 3.9W 0603
[Vishay Dale](#)

RFQ



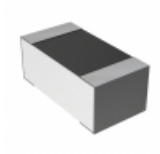
TNPU0603140RBZEN00
RES SMD 140 OHM 0.1% 1/10W 0603
[Vishay Dale](#)

RFQ



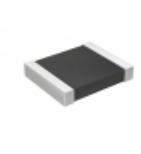
RG1005V-4320-B-T5
RES SMD 432 OHM 0.1% 1/16W 0402
[Susumu](#)

RFQ



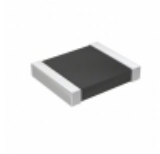
RN73C1J1K58BTG
RES SMD 1.58KOHM 0.1% 1/16W 0603
[TE Connectivity Passive Product](#)

RFQ



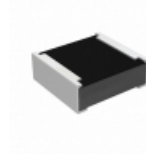
RT1210WRD07750KL
RES SMD 750K OHM 0.05% 1/4W 1210
[Yageo](#)

RFQ



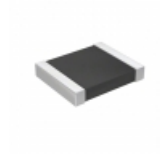
RT1210WRD078K25L
RES SMD 8.25KOHM 0.05% 1/4W 1210
[Yageo](#)

RFQ



RCP0505B430RJEJ
RES SMD 430 OHM 5% 5W 0505
[Vishay Dale](#)

RFQ



RT1210WRD072K32L
RES SMD 2.32KOHM 0.05% 1/4W 1210
[Yageo](#)

RFQ